

(#2748)  
WILLOW CREEK STATION  
UNIT NO. 8  
POR. NW. 1/4 SEC. 2  
T19N - R20E

(#2814)  
WILLOW CREEK STATION  
UNIT NO. 9

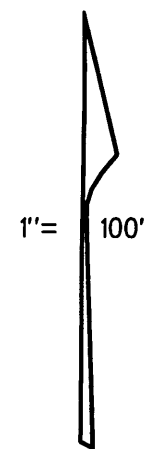
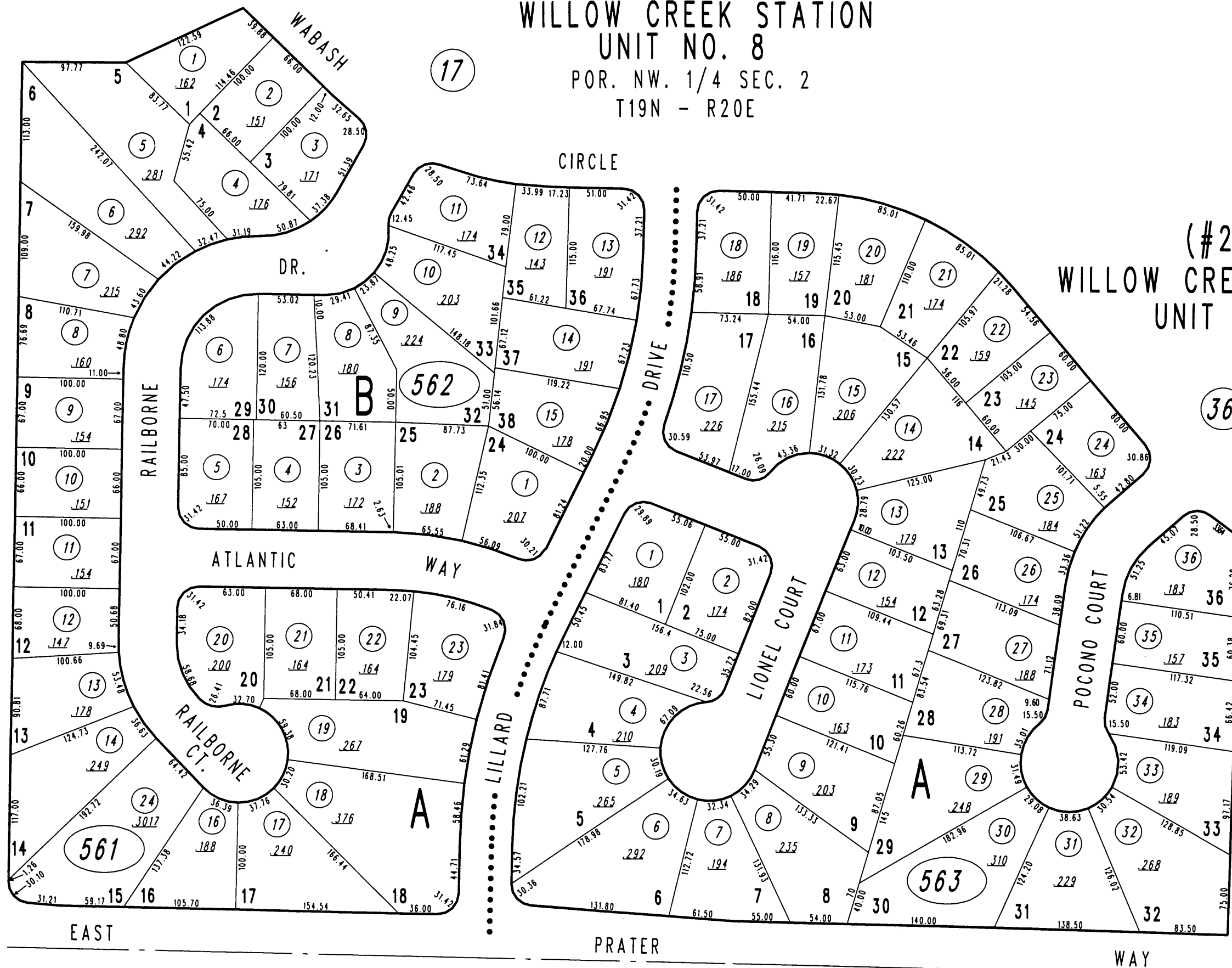
62

17

59

36

68



BOOK 37

EAST

PRATER

WAY

NOTE: This map is prepared for the use of the Washoe County Assessor for assessment and illustrative purposes only. It does not represent a survey of the premises. No liability is assumed as to the sufficiency or accuracy of the data delineated hereon.

Office of Washoe County Assessor, Nevada - Robert W. McGowan

NOTE:  
ASSESSOR'S BLOCK NUMBERS SHOWN IN ELLIPSES  
ASSESSOR'S PARCEL NUMBERS SHOWN IN CIRCLES

Drawn by GS 2/91  
Revised 12/91 1/93 10/93 3/94 6/94