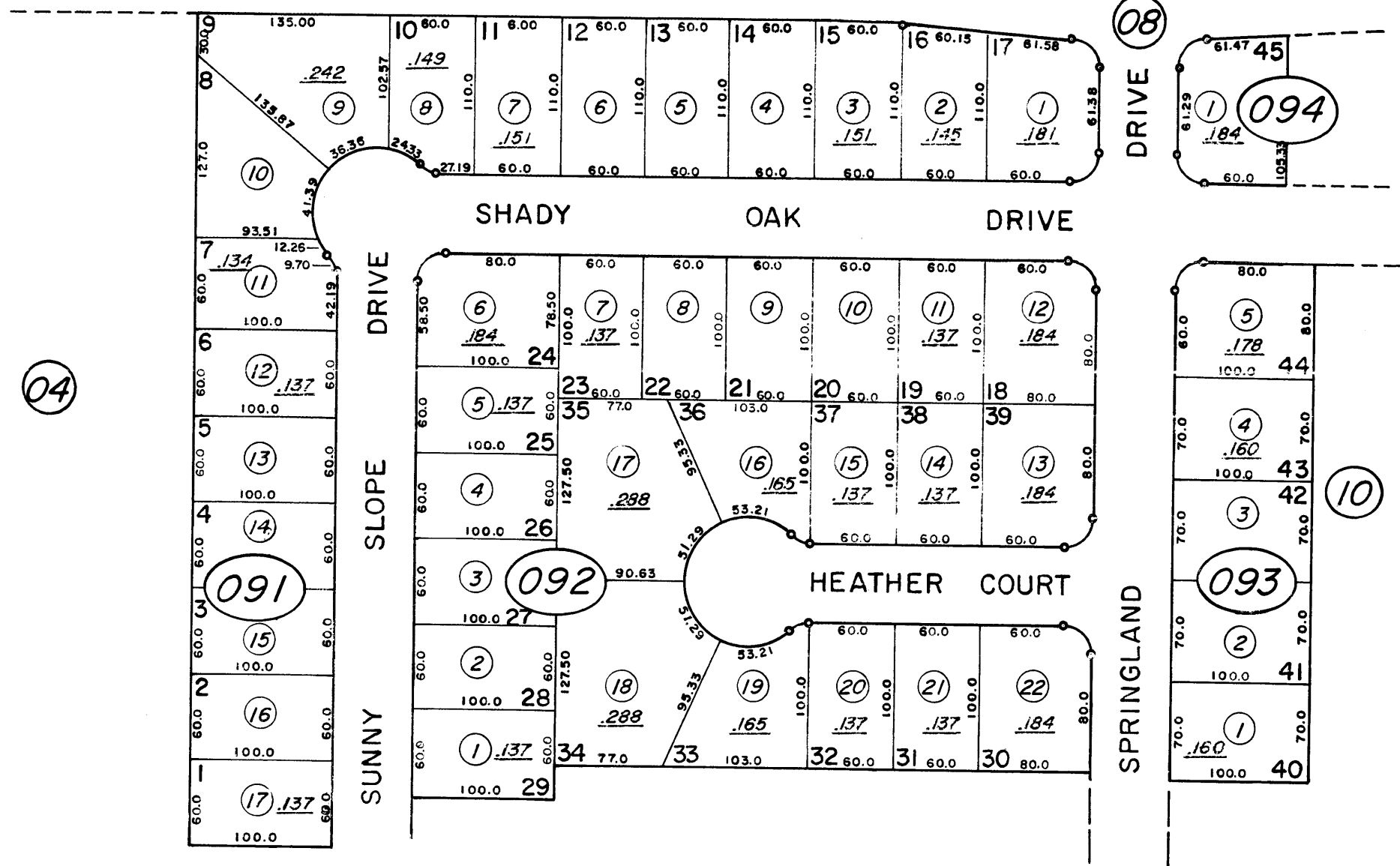


BARING

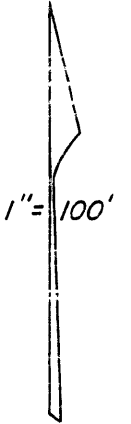
# LEWIS HOMES-SPARKS No.5-A

BOULEVARD 30-09



04

25



NOTE: This Map is prepared for the use of the Washoe County Assessor for Assessment and illustrative purposes only, it does not represent survey of the premises. No liability is assumed as to the sufficiency or accuracy of the data delineated hereon.

Assessor's Map County of Washoe, Nevada  
 NOTE - ASSESSOR'S BLOCK NUMBERS SHOWN IN ELLIPSES  
 ASSESSOR'S PARCEL NUMBERS SHOWN IN CIRCLES

|            |         |
|------------|---------|
| drawn by   | SO/7-76 |
| checked    |         |
| revised    |         |
| superseded |         |