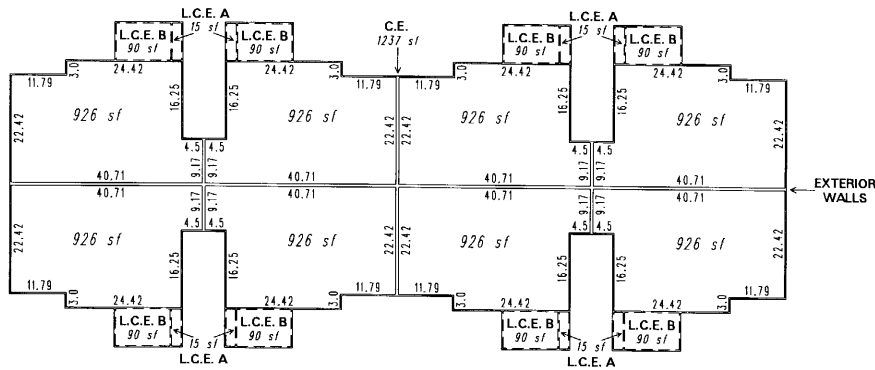


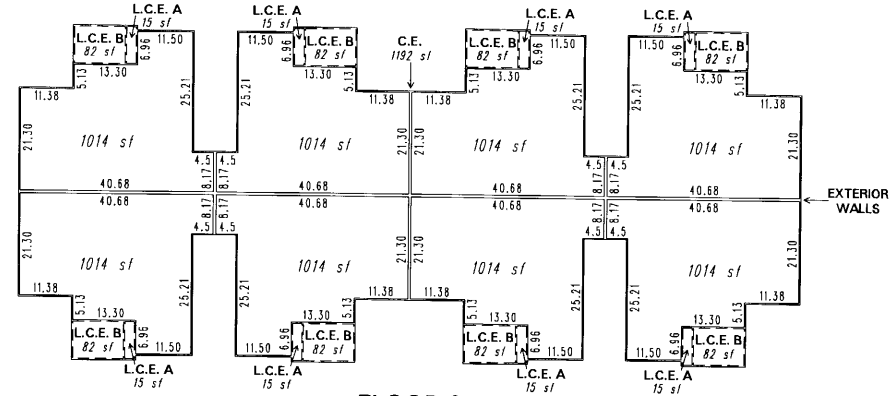
(#4843)

027-55-S1

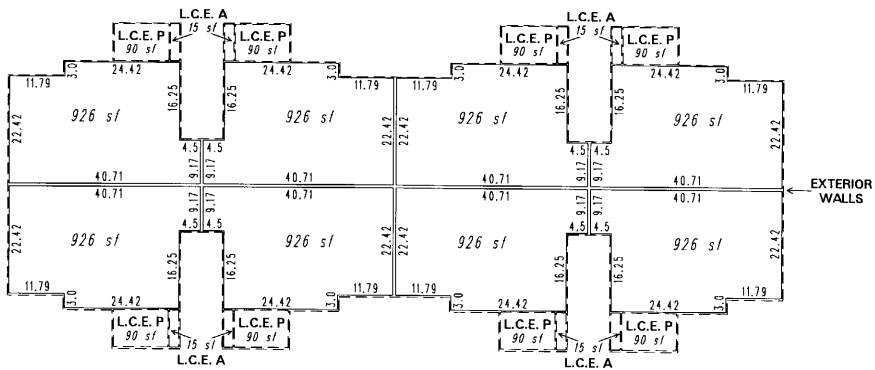
**THE VILLAGE AT WILDCREEK**  
A CONDOMINIUM SUBDIVISION  
A POR. OF THE E 1/2 OF SEC. 31,  
AND A POR. OF THE W 1/2 OF SEC. 32,  
T20N - R20E



FLOOR 2

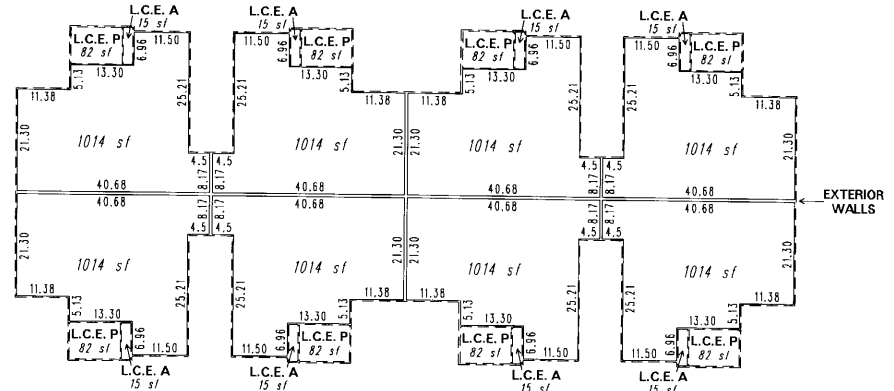


FLOOR 2



FLOOR 1

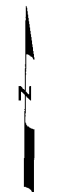
**FLOOR PLAN B**  
**BUILDINGS 15 & 18**



FLOOR 1

**FLOOR PLAN C**  
**BUILDINGS 1, 2, 3, 6, 7 & 12**

C.E. = COMMON ELEMENT  
L.C.E. A = LIMITED COMMON ELEMENT STORAGE  
L.C.E. B = LIMITED COMMON ELEMENT BALCONY  
L.C.E. P = LIMITED COMMON ELEMENT PATIO



1" = 30'



NOTE: This map is prepared for the use of the Washoe County Assessor for assessment and illustrative purposes only. It does not represent a survey of the premises. No liability is assumed as to the sufficiency or the accuracy of the data delineated hereon.

**BUILDING DETAILS**

Office of Washoe County Assessor, Nevada - Joshua G. Wilson

This area previously shown on 027-20

NOTE: Areas of parcels which are less than 2 acres are shown in square feet.

Drawn by NLH 01/02/08  
Revised \_\_\_\_\_  
ARC INFO 9.2 WINDOWS 2000 5.0