

23 24  
26 25

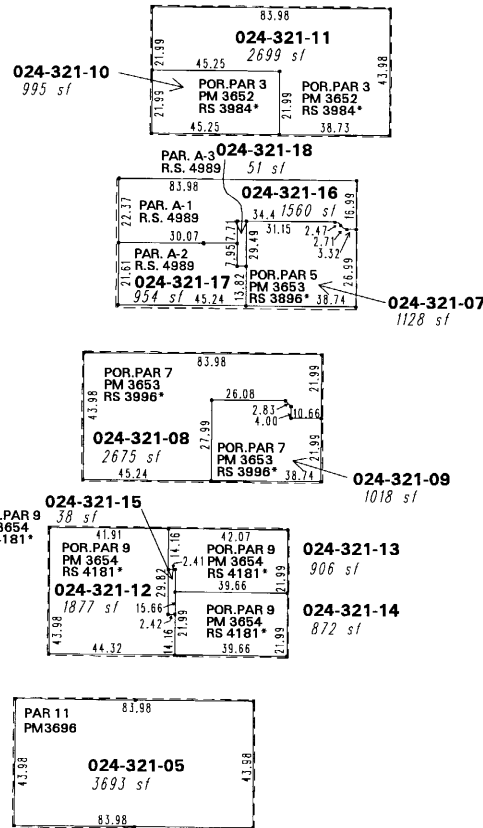
N04-08-43W  
457.25'

24- 28

BOOK 23

LAKESIDE DRIVE

SECOND FLOOR



**REVERSION TM #3761**  
POR. OF NW 1/4 SECTION 25  
T19N - R19E

24- 12

\* Parcels within an industrial subdivision pursuant to NRS 278.325

1" = 50'



24- 13

NOTE: This map is prepared for the use of the Washoe County Assessor for assessment and illustrative purposes only. It does not represent a survey of the premises. No liability is assumed as to the sufficiency or the accuracy of the data delineated hereon.

Office of Washoe County Assessor, Nevada - Joshua G. Wilson

This area previously shown on 024-12

NOTE: Areas of parcels which are less than 2 acres are shown in square feet.

Drawn by DSR 01/06/99  
 Revised HCS 2/22/02 HCS 1/31/03  
NLH 12/20/07