

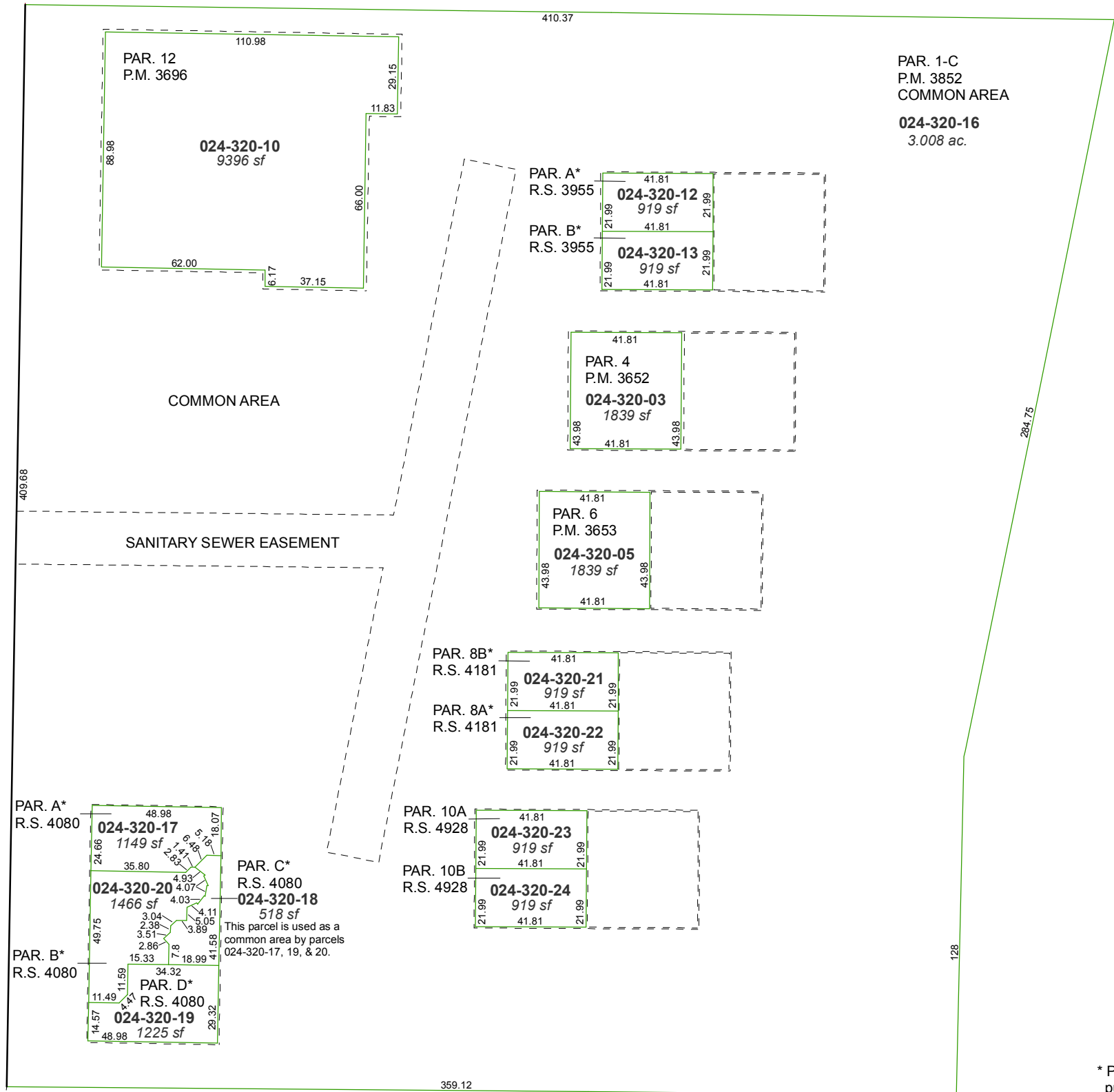
23
24
26
25
N04-08-43N
457.25

SIERRA PROFESSIONAL OFFICES

A POR. OF THE NW ¼ OF SEC. 25
T19N - R19E

FIRST FLOOR

LAKESIDE DRIVE



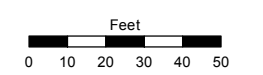
PAR. 1-C
P.M. 3852
COMMON AREA
024-320-16
3.008 ac.

Assessor's Map Number

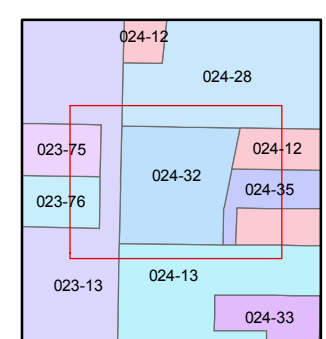
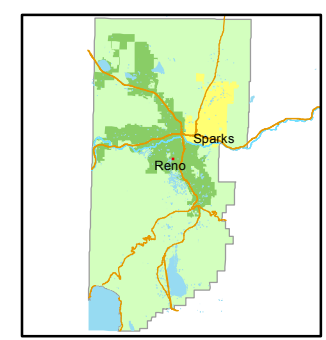
024-32

STATE OF NEVADA
WASHOE COUNTY
ASSESSOR'S OFFICE
Joshua G. Wilson, Assessor

1001 East Ninth Street
Building D
Reno, Nevada 89512
(775) 328-2231



1 inch = 50 feet



created by: NLH 11/03/2011

last updated: _____

area previously shown on map(s)
024-12

* Parcels within an industrial subdivision pursuant to NRS 278.325

NOTE: This map was prepared for the use of the Washoe County Assessor for assessment and illustrative purposes only. It does not represent a survey of the premises. No liability is assumed as to the sufficiency or accuracy of the data delineated herein.