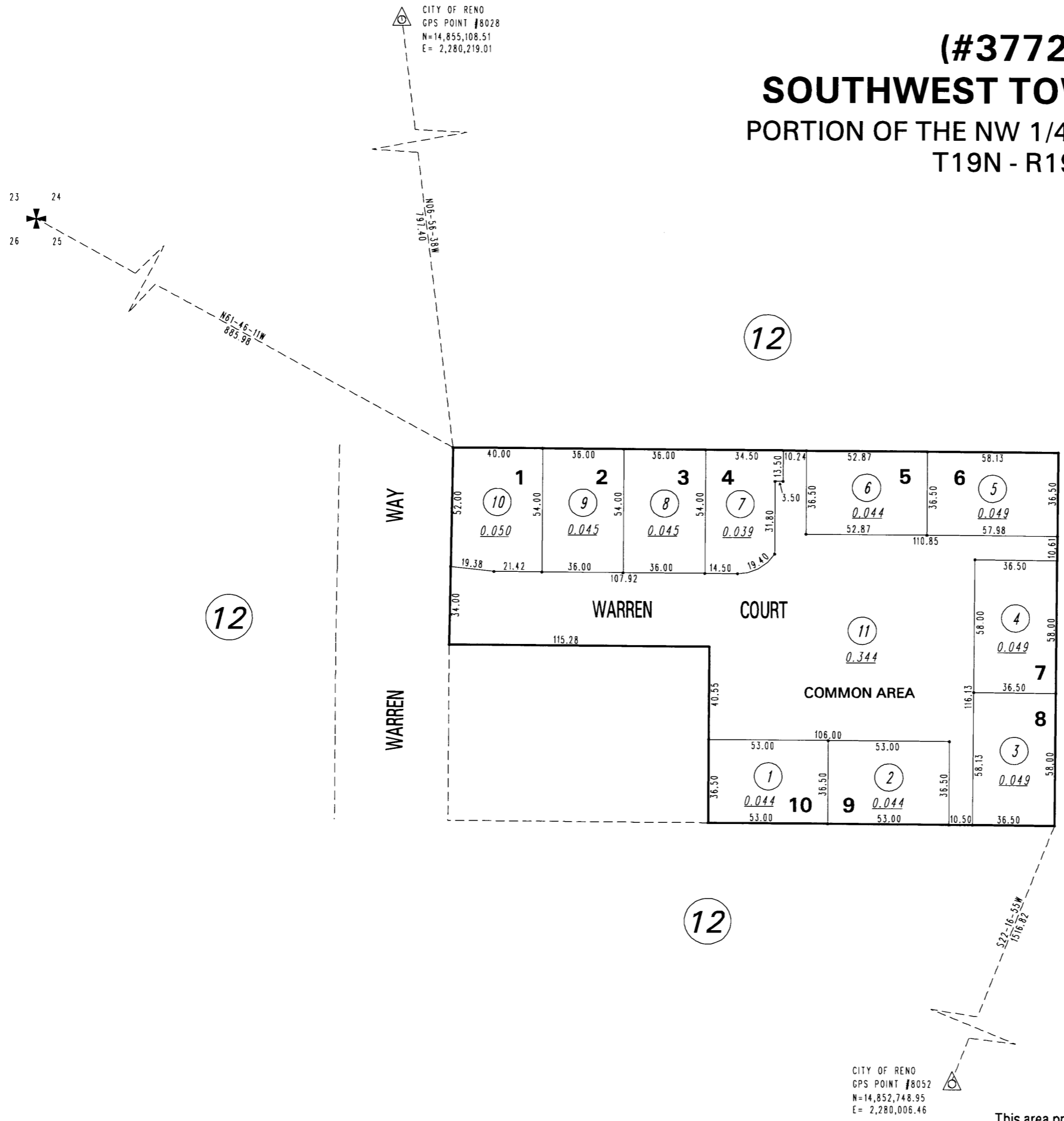


(#3772)
SOUTHWEST TOWNHOMES
PORTION OF THE NW 1/4 OF SECTION 25
T19N - R19E



NOTE: This map is prepared for the use of the Washoe County Assessor for assessment and illustrative purposes only. It does not represent a survey of the premises. No liability is assumed as to the sufficiency or the accuracy of the data delineated hereon.

Office of Washoe County Assessor, Nevada - Robert W. McGowan

This area previously shown on 24-12

NOTE: Areas of parcels which are less than 2 acres are shown in square feet.

Drawn by KS 12/07/99
 Revised KS 1/06/00

