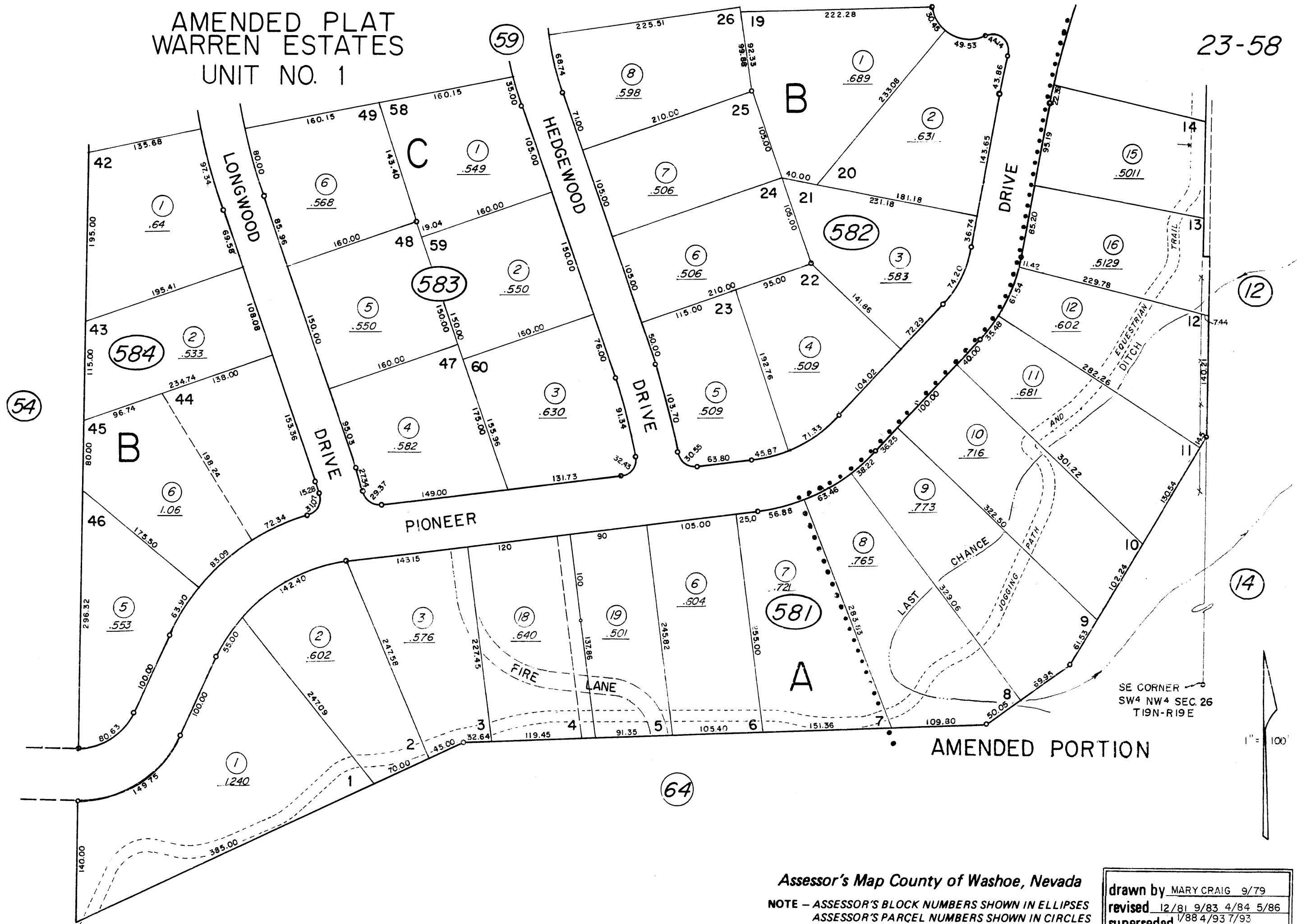


AMENDED PLAT  
WARREN ESTATES  
UNIT NO. 1

23-58



Assessor's Map County of Washoe, Nevada

NOTE - ASSESSOR'S BLOCK NUMBERS SHOWN IN ELLIPSES  
ASSESSOR'S PARCEL NUMBERS SHOWN IN CIRCLES

drawn by	MARY CRAIG	9/79
revised	12/81 9/83 4/84 5/86	
superseded	1/88 4/93 7/93	