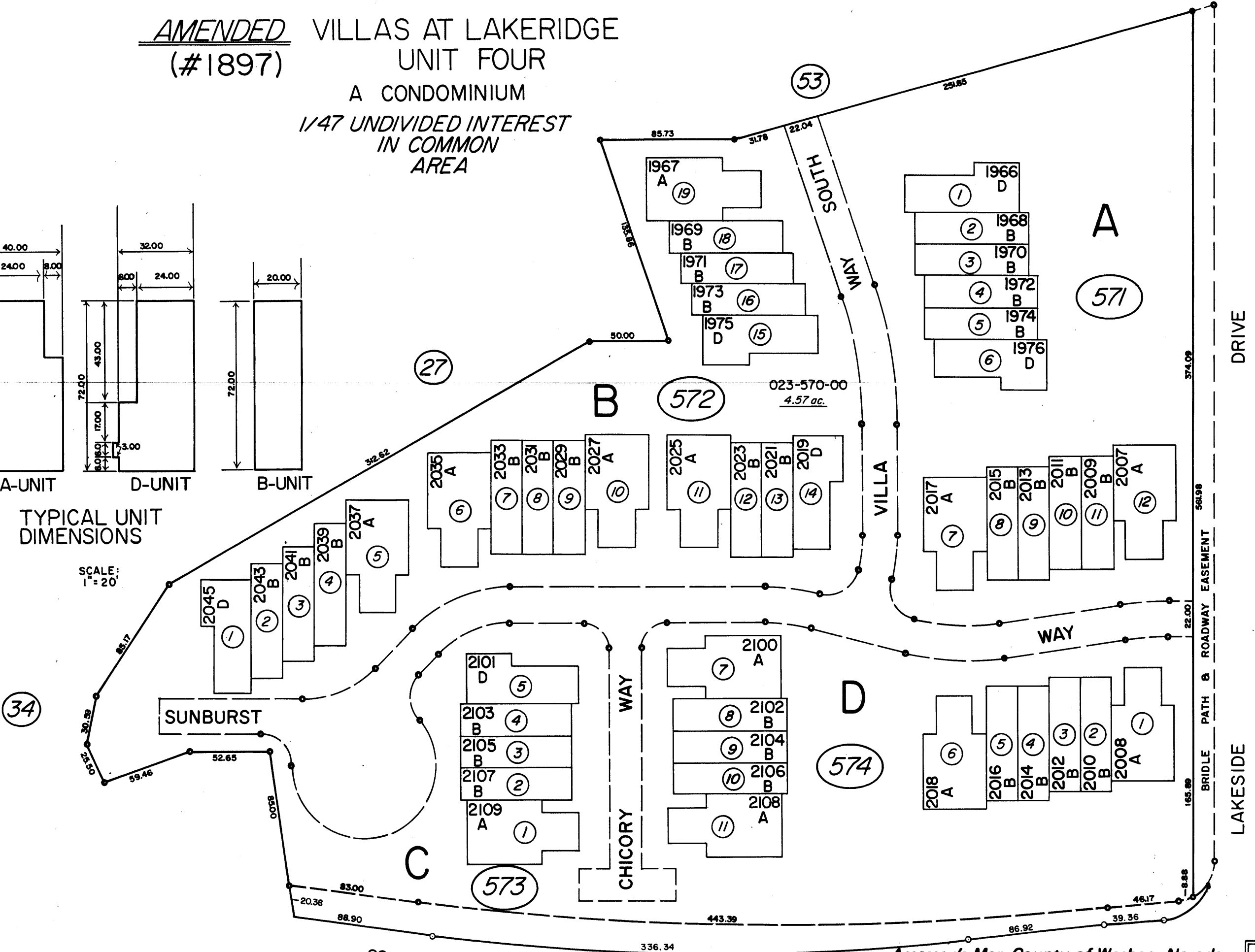
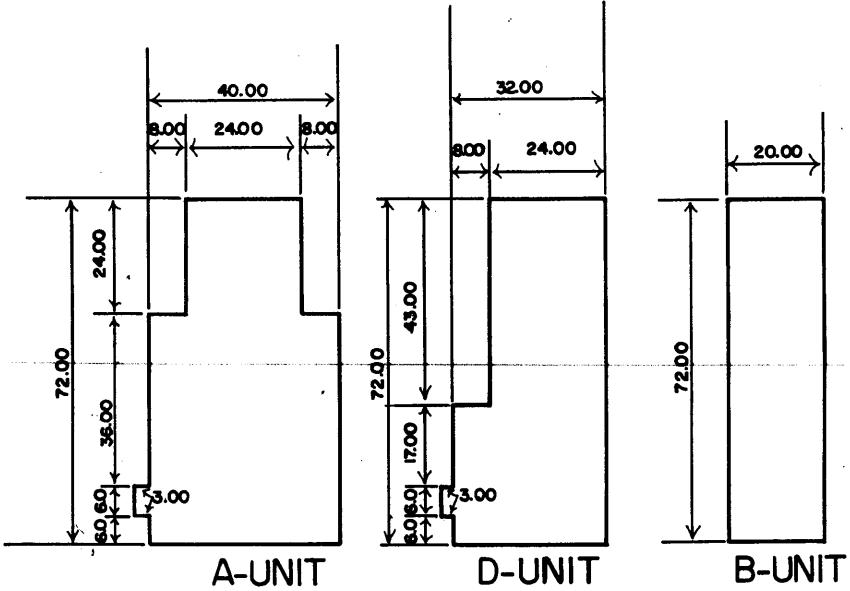


AMENDED
 (#1897)

VILLAS AT LAKERIDGE
 UNIT FOUR
 A CONDOMINIUM
 1/47 UNDIVIDED INTEREST
 IN COMMON
 AREA



BOOK 24

NOTE: This Map is prepared for the use of the Washoe County Assessor for Assessment and illustrative purposes only, it does not represent survey of the premises. No liability is assumed as to the sufficiency or accuracy of the data delineated hereon.

SO. MCCARRAN BLVD.

Assessor's Map County of Washoe, Nevada

NOTE - ASSESSOR'S BLOCK NUMBERS SHOWN IN ELLIPSES
 ASSESSOR'S PARCEL NUMBERS SHOWN IN CIRCLES

drawn by CFB 4/17/79
 revised 2/80 9/85 TWT 4/25/08
 superseded

