

(#4867)

VIRGINIA LAKE COMMONS

A POR. OF THE W 1/2 OF SEC. 24,
T19N - R19E

019-60-S7

019-60-S5

019-60

601

019-60-S8

019-20

HIDDEN CREST DRIVE

COCHRAN DRIVE

LYMBERY

STREET

019-60-S9

SHORE

VIEW

EASTSHORE PLACE

019-46

NOTES

LCE = LIMITED COMMON ELEMENT

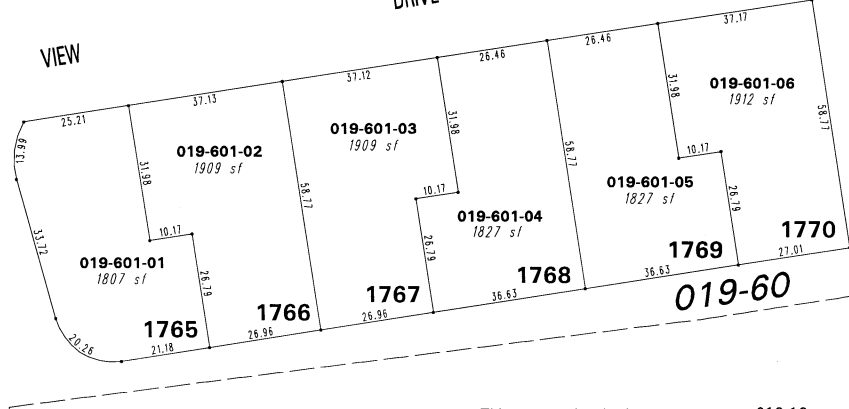
ALL STREETS WITHIN VIRGINIA LAKE COMMONS ARE PRIVATE

ADJACENT STREETS WERE DIGITIZED FROM AERIAL PHOTOS

SEE PG. 019-60 FOR COMMON ELEMENT BUILDINGS 100 THRU 1000 ARE MULTI LEVEL

SEE PG. 019-60-S1 THRU 019-60-S3 FOR MULTI LEVEL UNIT DETAILS

NOTE: This map is prepared for the use of the Washoe County Assessor for assessment and illustrative purposes only. It does not represent a survey of the premises. No liability is assumed as to the sufficiency or the accuracy of the data delineated hereon.



019-46

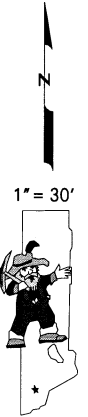
This area previously shown on 019-10

Office of Washoe County Assessor, Nevada - Joshua G. Wilson

NOTE: Areas of parcels which are less than 2 acres are shown in square feet.

Drawn by NLH 06/11/08

Revised _____



1" = 30'