

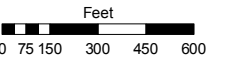
SEC. 35 & THE WEST 1/2 OF SEC. 36  
T18N - R20E

Assessor's Map Number

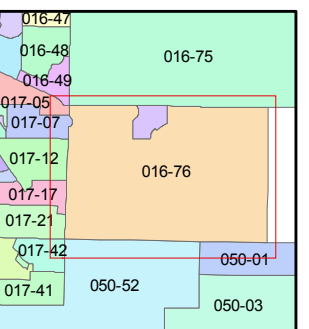
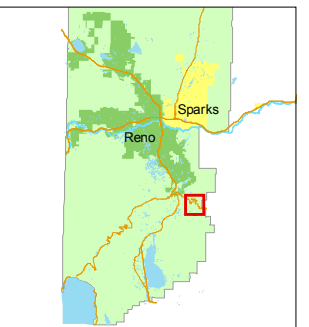
016-76

STATE OF NEVADA  
**WASHOE COUNTY**  
ASSESSOR'S OFFICE  
Joshua G. Wilson, Assessor

1001 East Ninth Street  
Building D  
Reno, Nevada 89512  
(775) 328-2231



1 inch = 600 feet

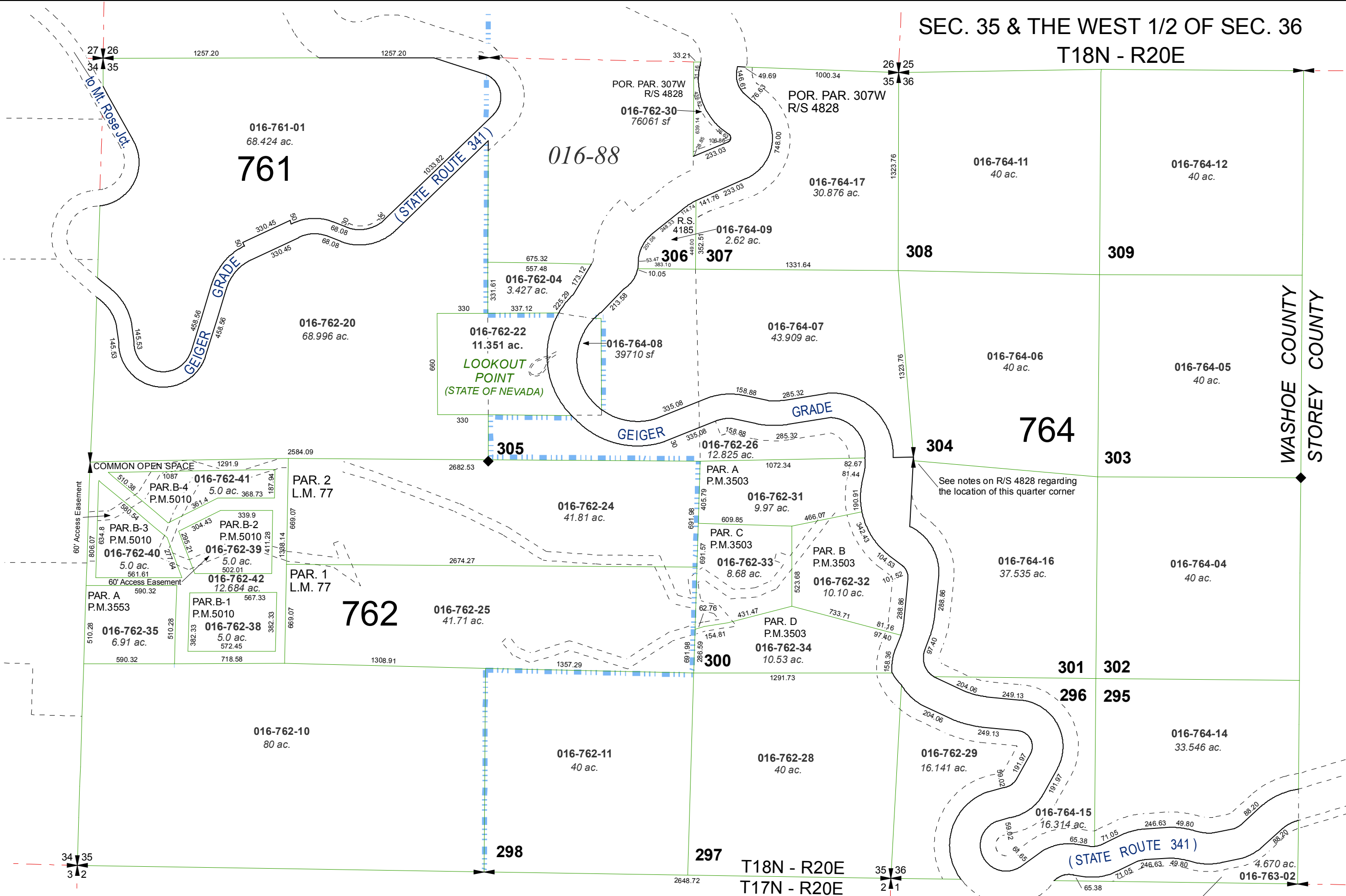


created by: CFB 02/12/2010

last updated: \_\_\_\_\_

area previously shown on map(s) \_\_\_\_\_

NOTE: This map was prepared for the use of the Washoe County Assessor for assessment and illustrative purposes only. It does not represent a survey of the premises. No liability is assumed as to the sufficiency or accuracy of the data delineated hereon.



**AMENDED DIVISION OF LAND MAP #25  
RECORD OF SURVEY #4828**

763