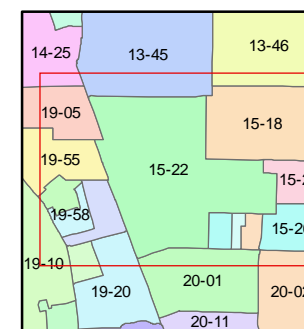
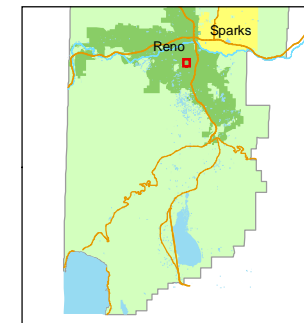


1 inch = 200 feet



created by: CFB 6/3/2009

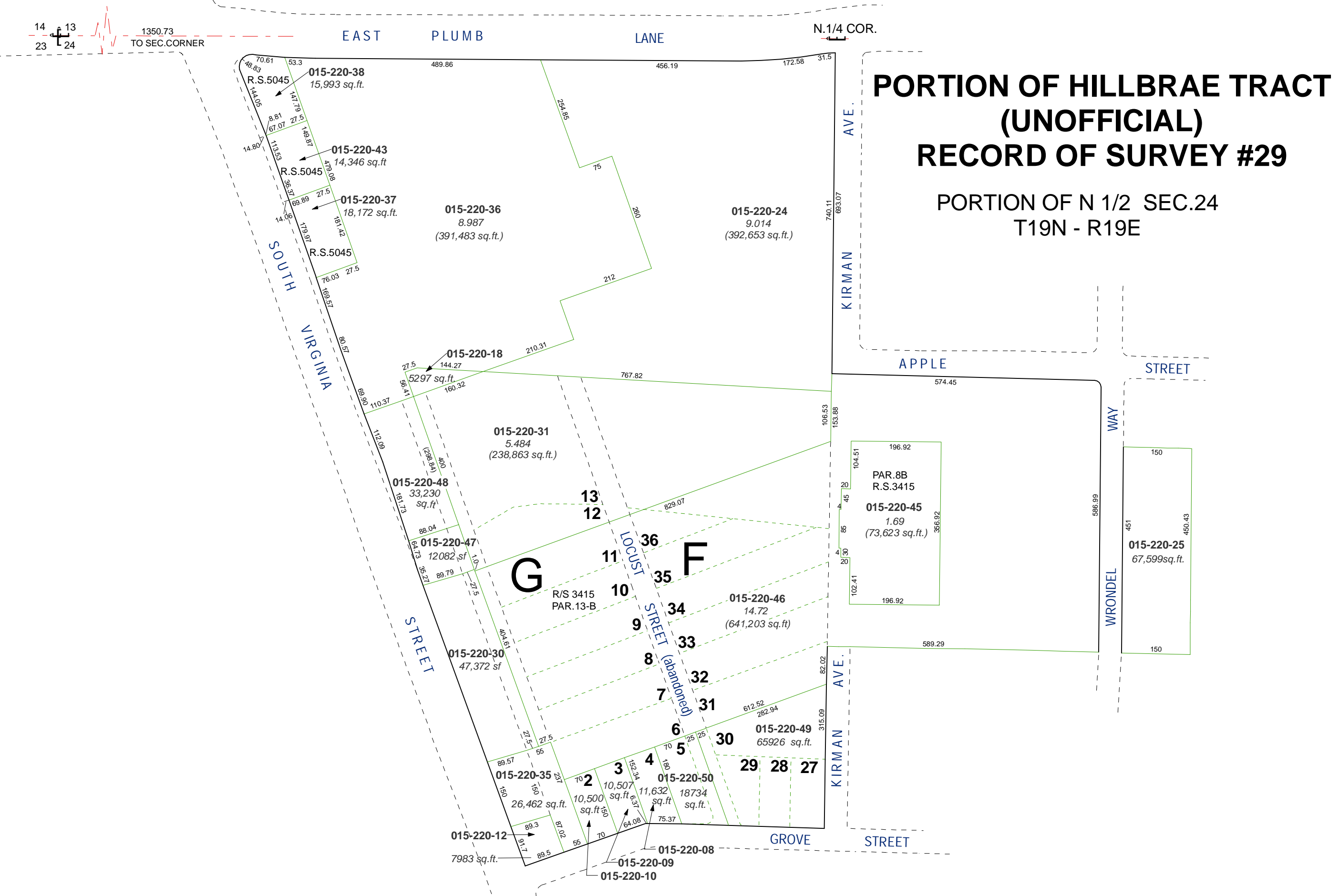
last updated:

area previously shown on map(s)

NOTE: This map was prepared for the use of the Washoe County Assessor for assessment and illustrative purposes only. It does not represent a survey of the premises. No liability is assumed as to the sufficiency or accuracy of the data delineated hereon.

PORTION OF HILLBRAE TRACT (UNOFFICIAL) RECORD OF SURVEY #29

PORTION OF N 1/2 SEC.24 T19N - R19E



015-220-36
8.987
(391,483 sq.ft.)

015-220-24
9.014
(392,653 sq.ft.)

015-220-38
15,993 sq.ft.

015-220-43
14,346 sq.ft.

015-220-37
18,172 sq.ft.

015-220-18
5297 sq.ft.

015-220-31
5.484
(238,863 sq.ft.)

015-220-48
33,230 sq.ft.

015-220-47
12,082 sq.ft.

015-220-30
47,372 sq.ft.

015-220-35
26,462 sq.ft.

015-220-12
7983 sq.ft.

015-220-09
015-220-10

015-220-50
18734 sq.ft.

015-220-49
65926 sq.ft.

015-220-46
14.72
(641,203 sq.ft.)

PAR.8B
R.S.3415
015-220-45
1.69
(73,623 sq.ft.)

015-220-25
67,599sq.ft.

G

F

13
12

11
10

9
8

7
6

5
4

3
2

36
35
34
33
32
31
30

29
28
27

R/S 3415
PAR.13-B

GROVE STREET

APPLE STREET

STREET

KIRMAN AVE.

KIRMAN AVE.

WRONDEL WAY

SOUTH VIRGINIA

EAST PLUMB LANE

N.1/4 COR.