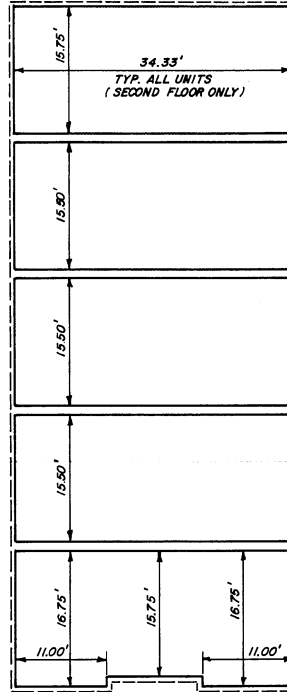
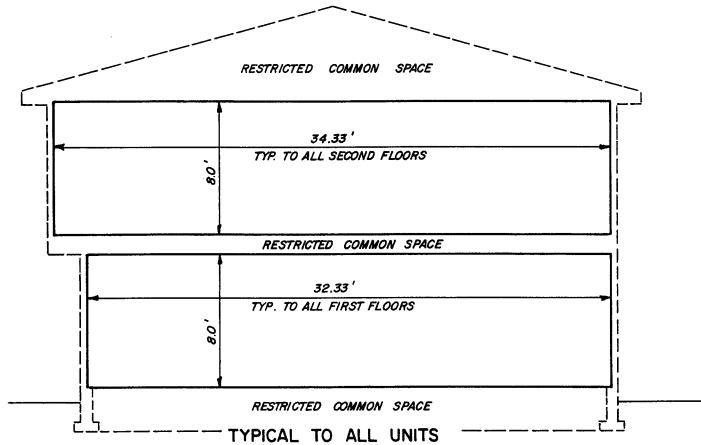


FIRST FLOOR PLAN

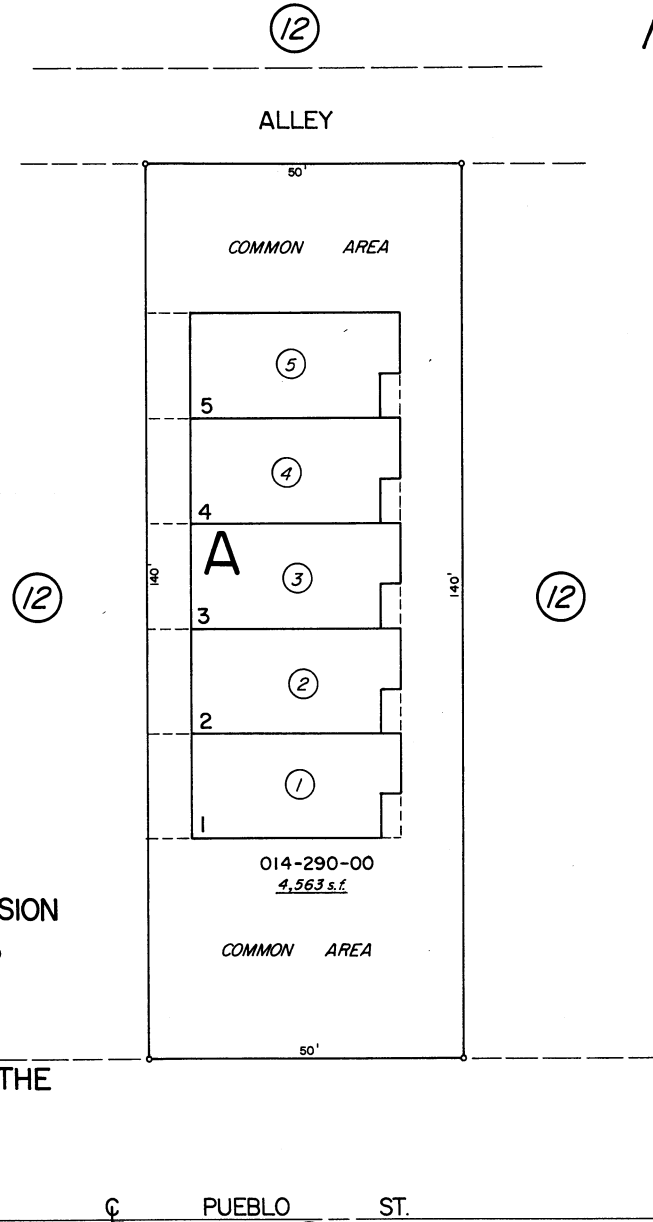


SECOND FLOOR PLAN



TYPICAL TO ALL UNITS

(# 2327)
PUEBLO PLACE
 A CONDOMINIUM SUBDIVISION
 POR. SW. 1/4 SEC. 13
 T. 19 N. - R. 19 E.
 TO EACH AN UNDIVIDED
 1/5 TH INTEREST IN THE
 COMMON AREA



014-290-00
4,563 s.f.

PUEBLO ST.

1" = 20'



NOTE: This map is prepared for the use of the Washoe County Assessor for assessment and illustrative purposes only, it does not represent survey of the premises. No liability is assumed as to the sufficiency or accuracy of the data delineated herein.