

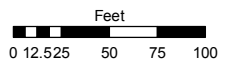
AMENDED CONTINENTAL COMMERCIAL CENTER (#2624)

Assessor's Map Number

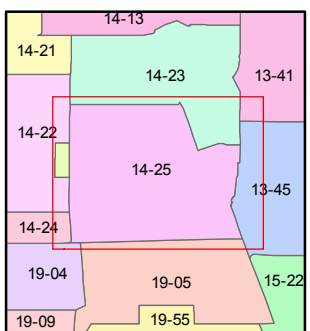
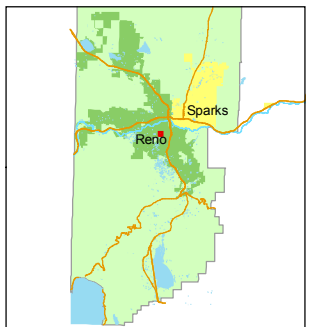
014-25

STATE OF NEVADA
WASHOE COUNTY
ASSESSOR'S OFFICE
 Joshua G. Wilson, Assessor

1001 East Ninth Street
 Building D
 Reno, Nevada 89512
 (775) 328-2231



1 inch = 100 feet

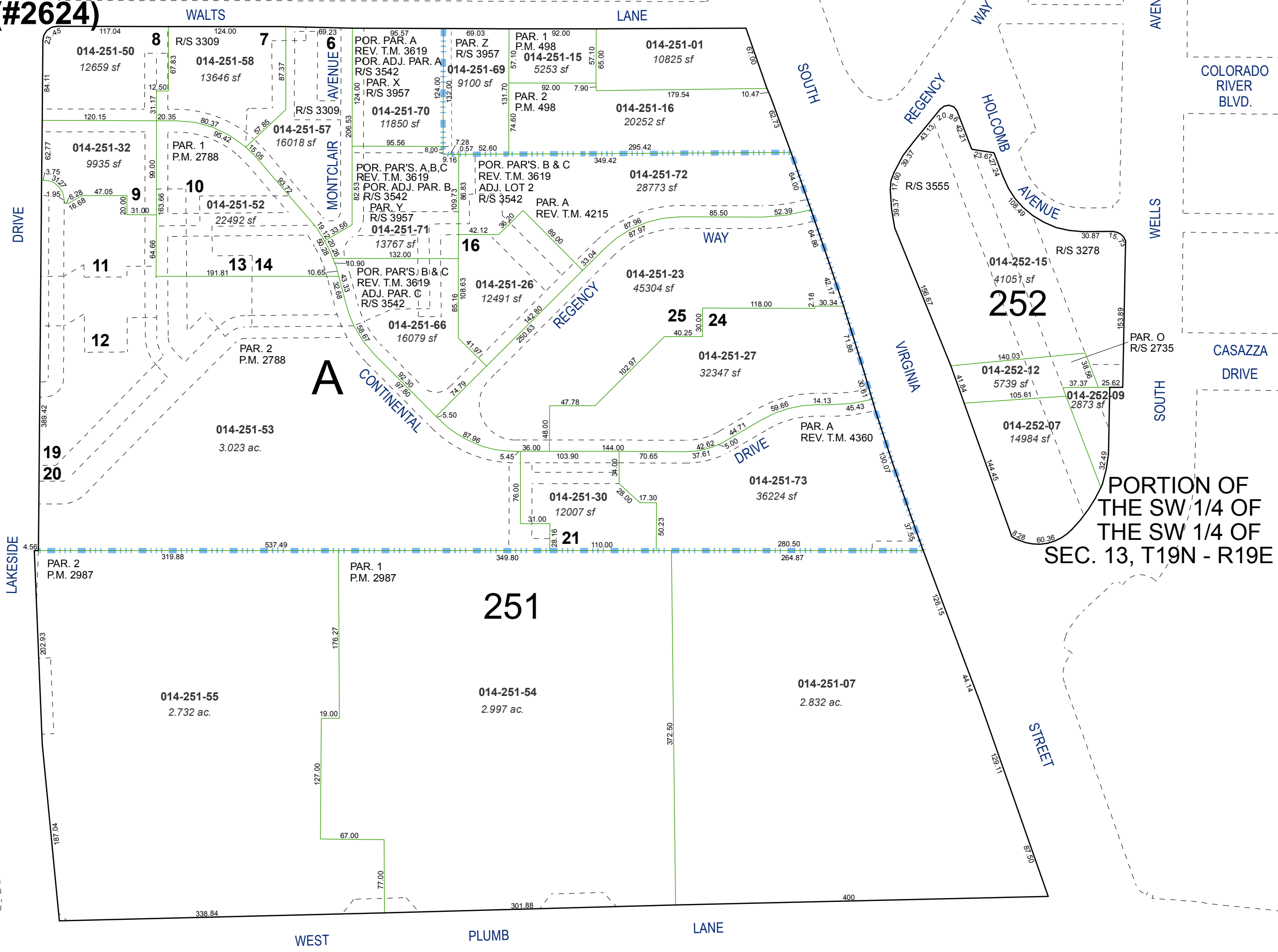


created by: TWT 1/14/2010

last updated: _____

area previously shown on map(s)

NOTE: This map was prepared for the use of the Washoe County Assessor for assessment and illustrative purposes only. It does not represent a survey of the premises. No liability is assumed as to the sufficiency or accuracy of the data delineated hereon.



**PORTION OF
 THE SW 1/4 OF
 THE SW 1/4 OF
 SEC. 13, T19N - R19E**

251

252

A