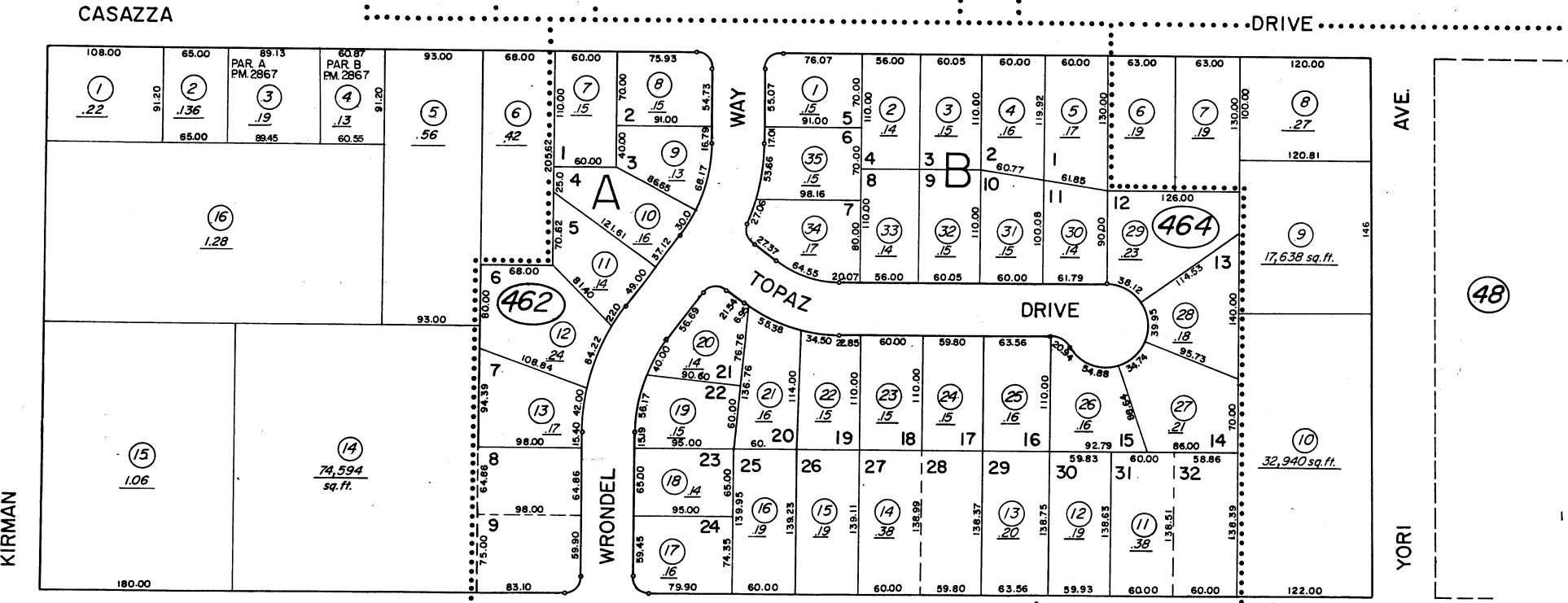
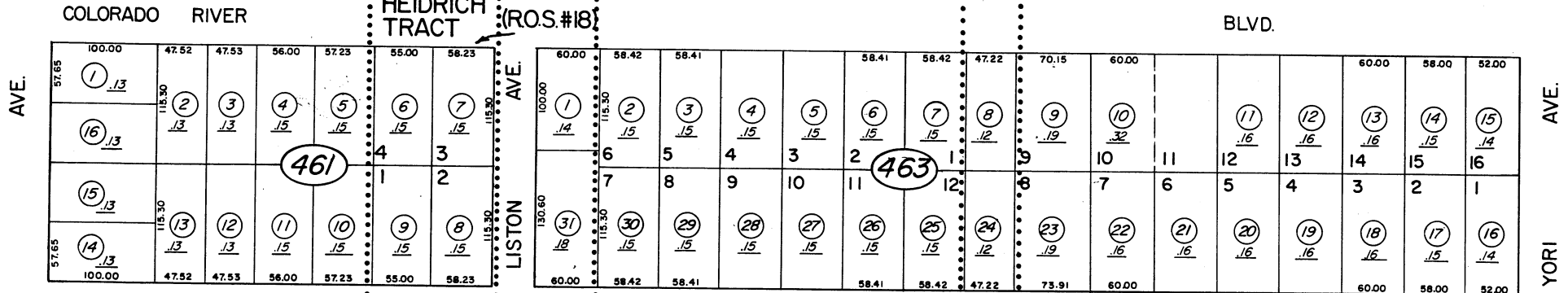


PTN SE4 SEC. 13, T19N-R19E

(#686) JUBILEE SUB. (42)

(ROS.# 8) NORMAN TRACT UNOFF 13-46



E. PLUMB

WELSH SUBDIVISION (#492)

Assessor's Map County of Washoe, Nevada

drawn by M.CRAIG 10/20/76
 checked
 revised 7/84 3/85 9/86 3/95 7/98
 superseded

BOOK 15-18

NOTE - ASSESSOR'S BLOCK NUMBERS SHOWN IN ELLIPSES
ASSESSOR'S PARCEL NUMBERS SHOWN IN CIRCLES

3/4 CORNER SEC. 13, T19N-R19E
 NOTE: This Map is prepared for the use of the Washoe County Assessor for Assessment and illustrative purposes only, it does not represent survey of the premises. No liability is assumed as to the sufficiency or accuracy of the data delineated hereon.

1" = 100'