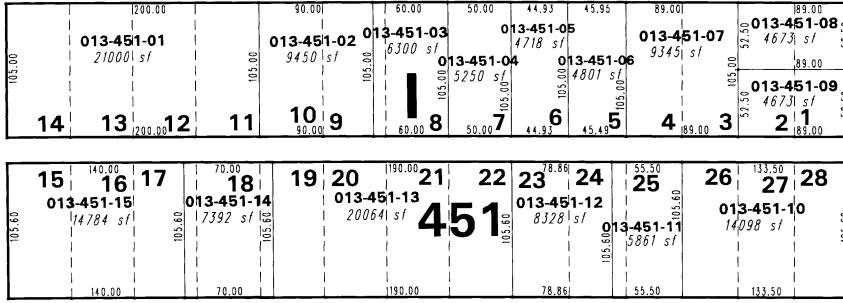
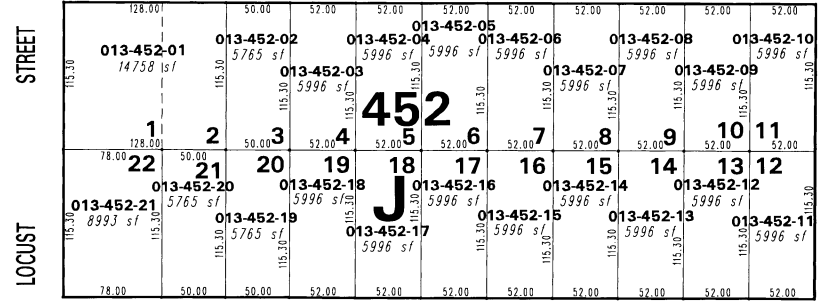


**(#228) SOUTHSIDE SUBDIVISION
REARRANGEMENT OF BLOCK I** COLORADO



(#223) SOUTHSIDE SUBDIVISION 013-45
RIVER BLVD.



014-23

HOLCOMB AVENUE

AVENUE

STREET

LOCUST

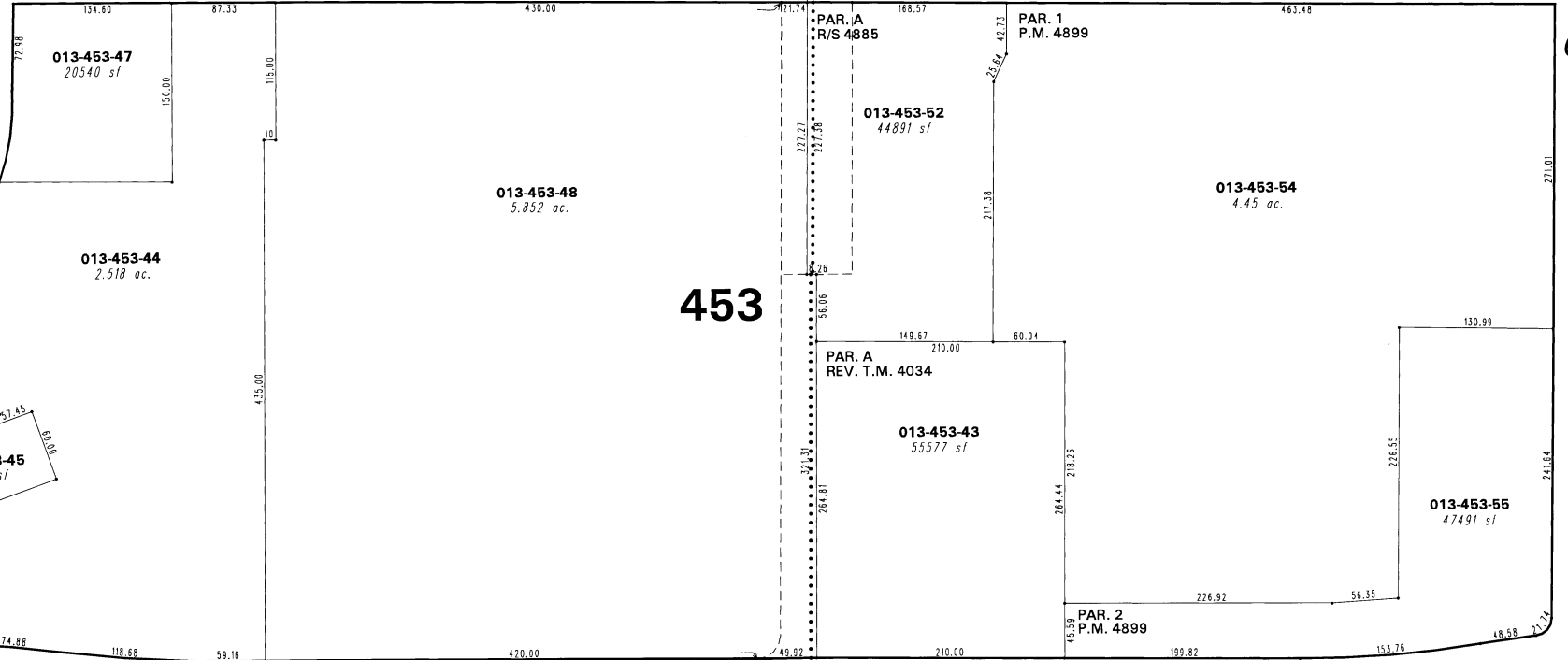
AVENUE

014-25

CASAZZA

DRIVE

WELLS



453

013-46

KIRMAN



1" = 100'



014-25

EAST

PLUMB

(#318) CASAZZA ADDITION

LANE

PORTION OF THE SW 1/4 OF SEC. 13, T19N - R19E

019-05

This area previously shown on

015-22

NOTE: This map is prepared for the use of the Washoe County Assessor for assessment and illustrative purposes only. It does not represent a survey of the premises. No liability is assumed as to the sufficiency or the accuracy of the data delineated hereon.

Office of Washoe County Assessor, Nevada - Joshua G. Wilson

NOTE: Areas of parcels which are less than 2 acres are shown in square feet.

Drawn by TWT 05/03/07
Revised TWT 4/23/08