

013-34

013-44

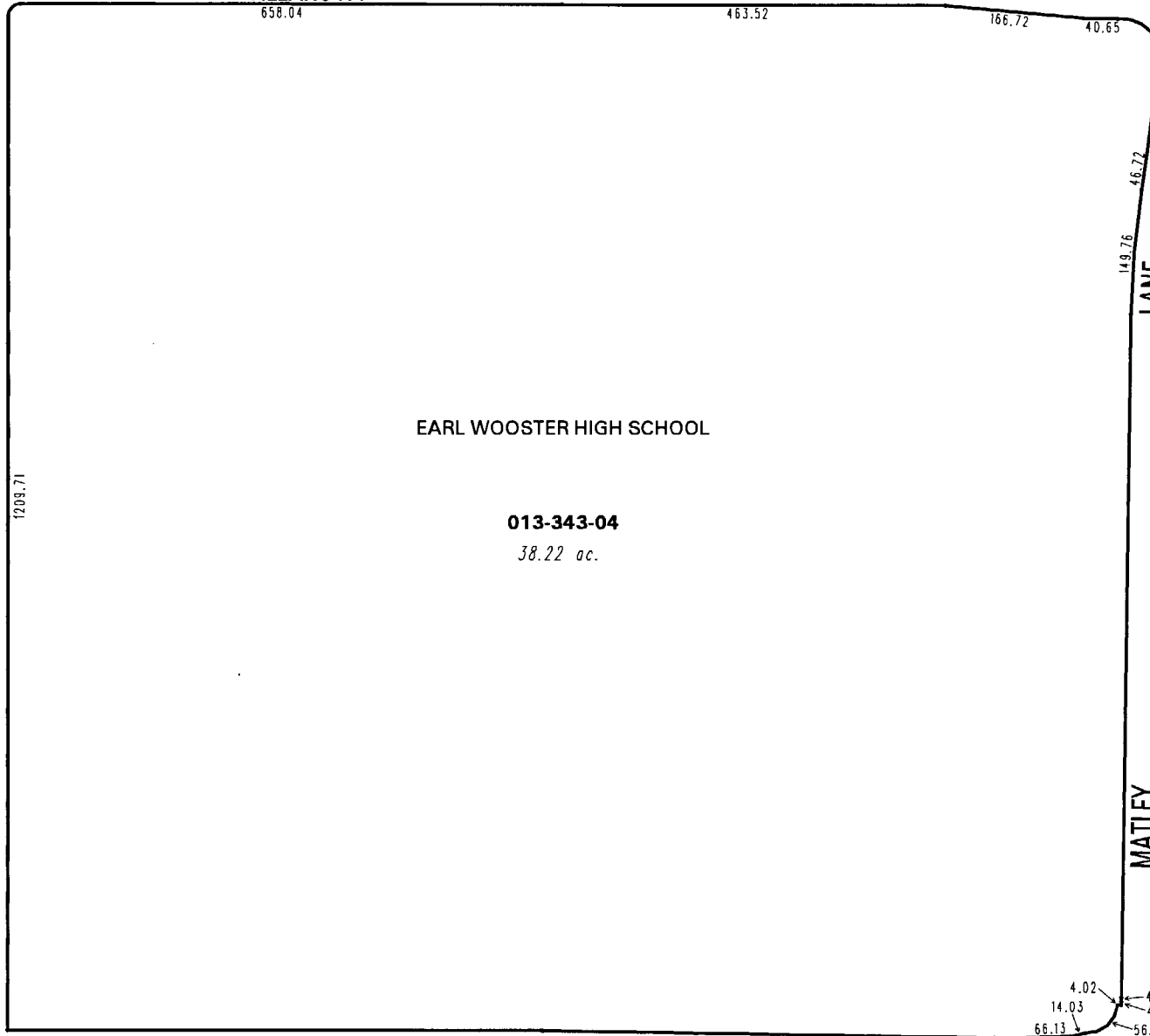
013-33

013-33

U.S. 395

VILLANOVA

DRIVE



EARL WOOSTER HIGH SCHOOL

013-343-04
38.22 ac.

AR#01334123
(Air Space Lease beneath U.S. 395)
Document 842028
3/7/1983
6.87 ac.

CITIFARE BUS STATION

013-341-20
19,166 sf

013-341-21
48,352 sf

013-341-22
31,799 sf

Abandoned portion Airmotive Way

013-341-19
5.05 ac.

013-341-07
3.72 ac.

013-341-11
49,571 sf

WAY

HARVARD

LANE

MATLEY

ROAD

FRONTAGE

WAY

TERMINAL

EAST

PLUMB

18
19

LANE

015-29

015-29

PORTION OF THE S 1/2 OF SECTION 18, T19N - R20E

AR = Air Rights Account Number

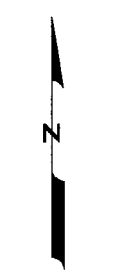
This area previously shown on _____

NOTE: Areas of parcels which are less than 2 acres are shown in square feet.

Drawn by CFB 5/6/2005
Revised _____

NOTE: This map is prepared for the use of the Washoe County Assessor for assessment and illustrative purposes only. It does not represent a survey of the premises. No liability is assumed as to the sufficiency or the accuracy of the data delineated hereon.

Office of Washoe County Assessor, Nevada - Robert W. McGowan



1" = 200'

