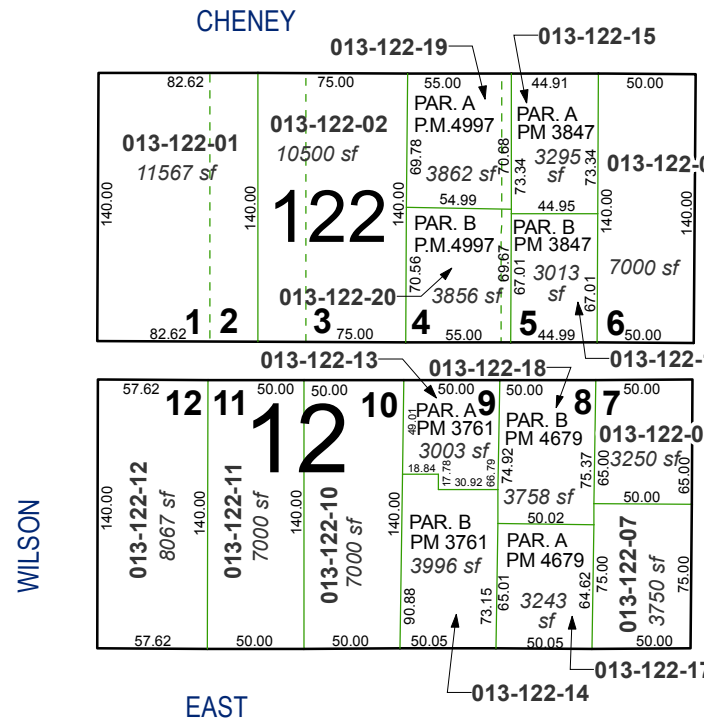
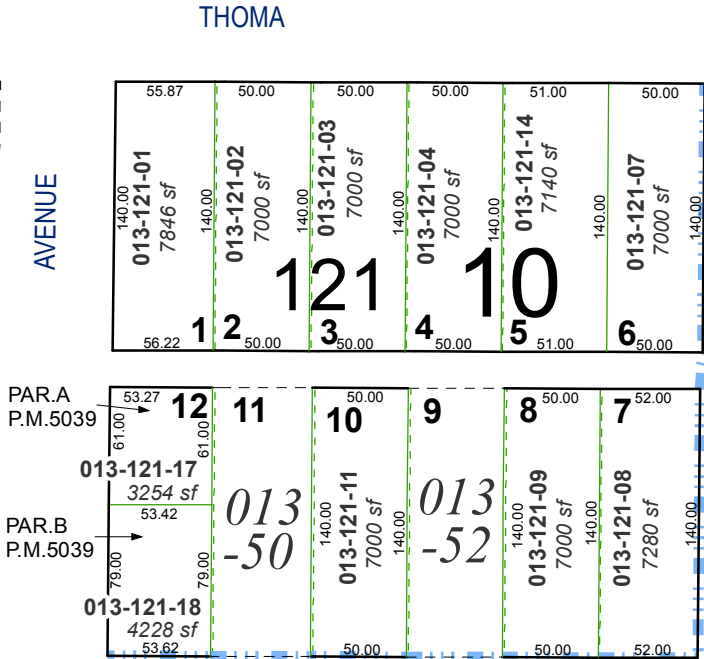
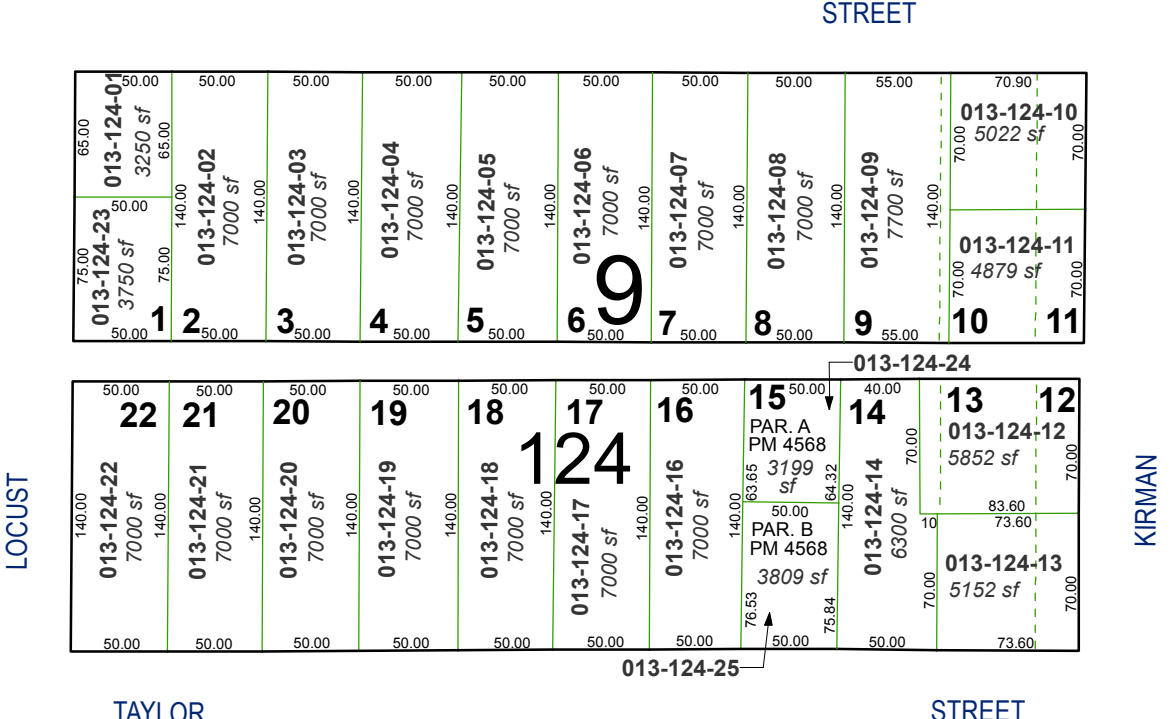
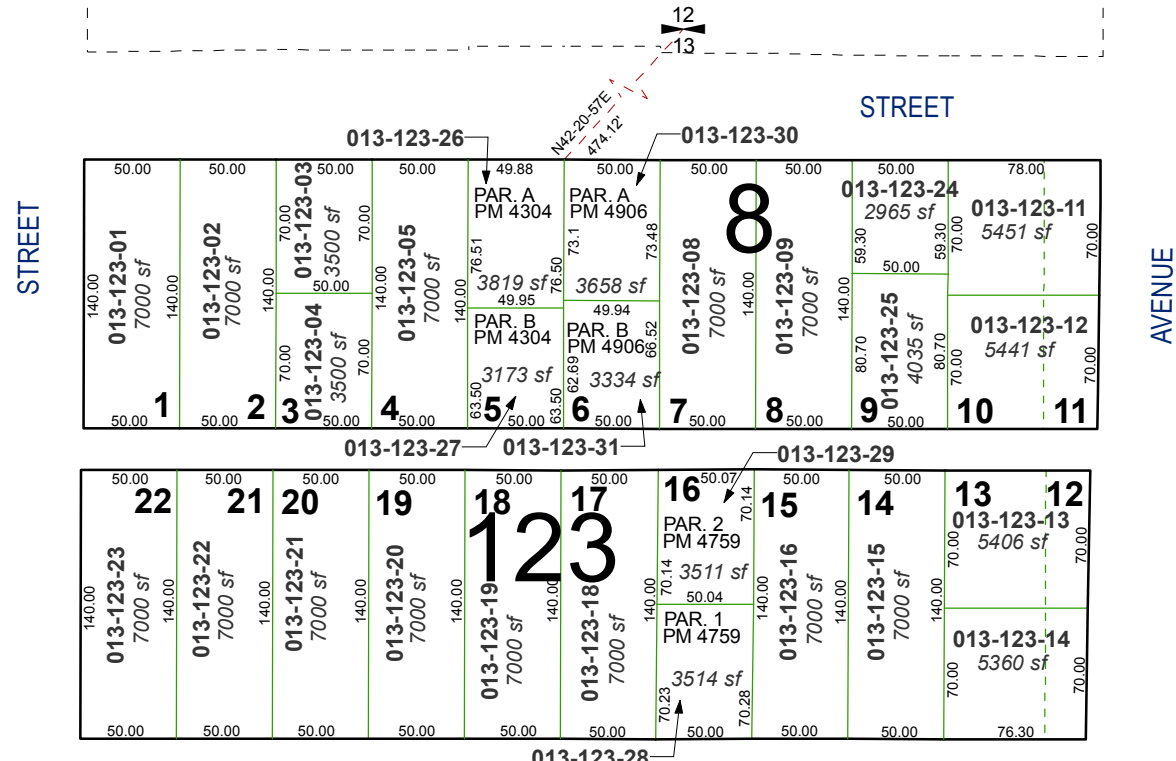


# (#115) SOUTHERN ADDITION



# (#170) BURKE'S ADDITION

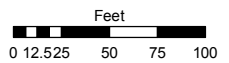
PORTION OF THE NORTHWEST 1/4 OF SEC. 13  
T19N - R19E



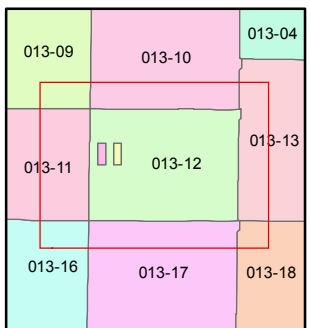
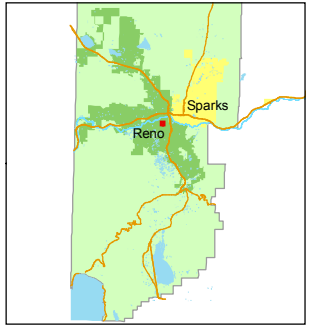
Assessor's Map Number  
**013-12**

STATE OF NEVADA  
**WASHOE COUNTY**  
ASSESSOR'S OFFICE  
Joshua G. Wilson, Assessor

1001 East Ninth Street  
Building D  
Reno, Nevada 89512  
(775) 328-2231



1 inch = 100 feet



created by: CFB 06/24/2009  
last updated: CFB 11/04/2010

area previously shown on map(s)

NOTE: This map was prepared for the use of the Washoe County Assessor for assessment and illustrative purposes only. It does not represent a survey of the premises. No liability is assumed as to the sufficiency or accuracy of the data delineated hereon.