

**(#527)
CURTI SUBDIVISION**

**(#611)
BALLENTYNE
SUBDIVISION**

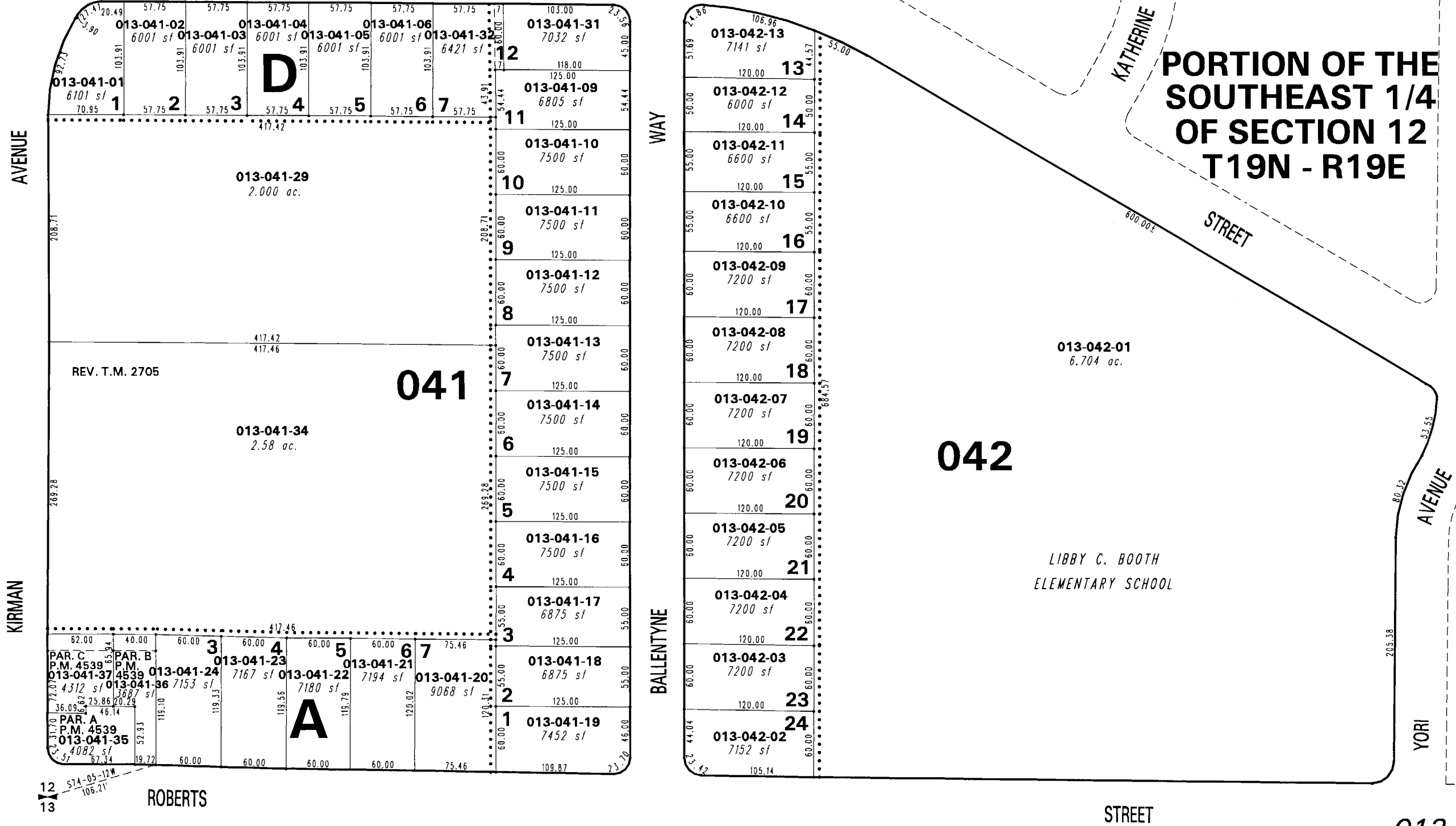
013-04

013-03

013-02

013-05

**PORTION OF THE
SOUTHEAST 1/4
OF SECTION 12
T19N - R19E**



MORAN STREET

KIRMAN AVENUE

WAY

BALLENTYNE

DRIVE

KATHERINE

STREET

AVENUE

YORI

STREET

REV. T.M. 2705

LIBBY C. BOOTH
ELEMENTARY SCHOOL

ROBERTS

EDELWEISS STREET

**(#353)
RECTOR TRACT**

013-13

Office of Washoe County Assessor, Nevada - Robert W. McGowan

This area previously shown on _____

NOTE: Areas of parcels which are less than 2 acres are shown in square feet.

Drawn by TWT 04/18/06
Revised _____

NOTE: This map is prepared for the use of the Washoe County Assessor for assessment and illustrative purposes only. It does not represent a survey of the premises. No liability is assumed as to the sufficiency or the accuracy of the data delineated hereon.