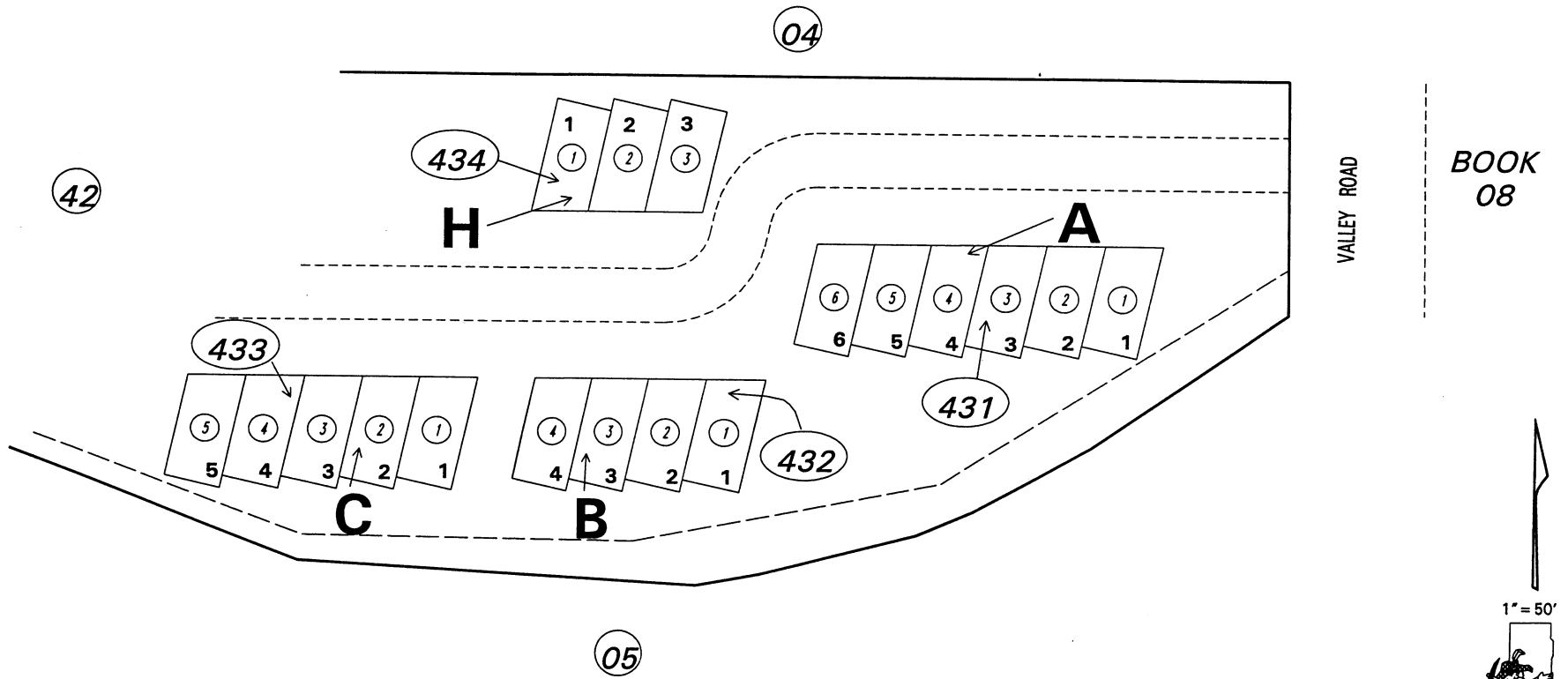


**(#3164)**  
**VALLEY ROAD DEVELOPMENT**  
**A CONDOMINIUM SUBDIVISION**  
 POR. OF THE NE 1/4 OF SECTION 2,  
 T19N - R19E  
 (LOTS ONLY)



BOOK 08

NOTE: This map is prepared for the use of the Washoe County Assessor for assessment and illustrative purposes only. It does not represent a survey of the premises. No liability is assumed as to the sufficiency or the accuracy of the data delineated hereon.

Office of Washoe County Assessor, Nevada - Robert W. McGowan

NOTE:  
 ASSESSOR'S BLOCK NUMBERS SHOWN IN ELLIPSES  
 ASSESSOR'S PARCEL NUMBERS SHOWN IN CIRCLES

Drawn by	CAH	09/11/95
Revised		