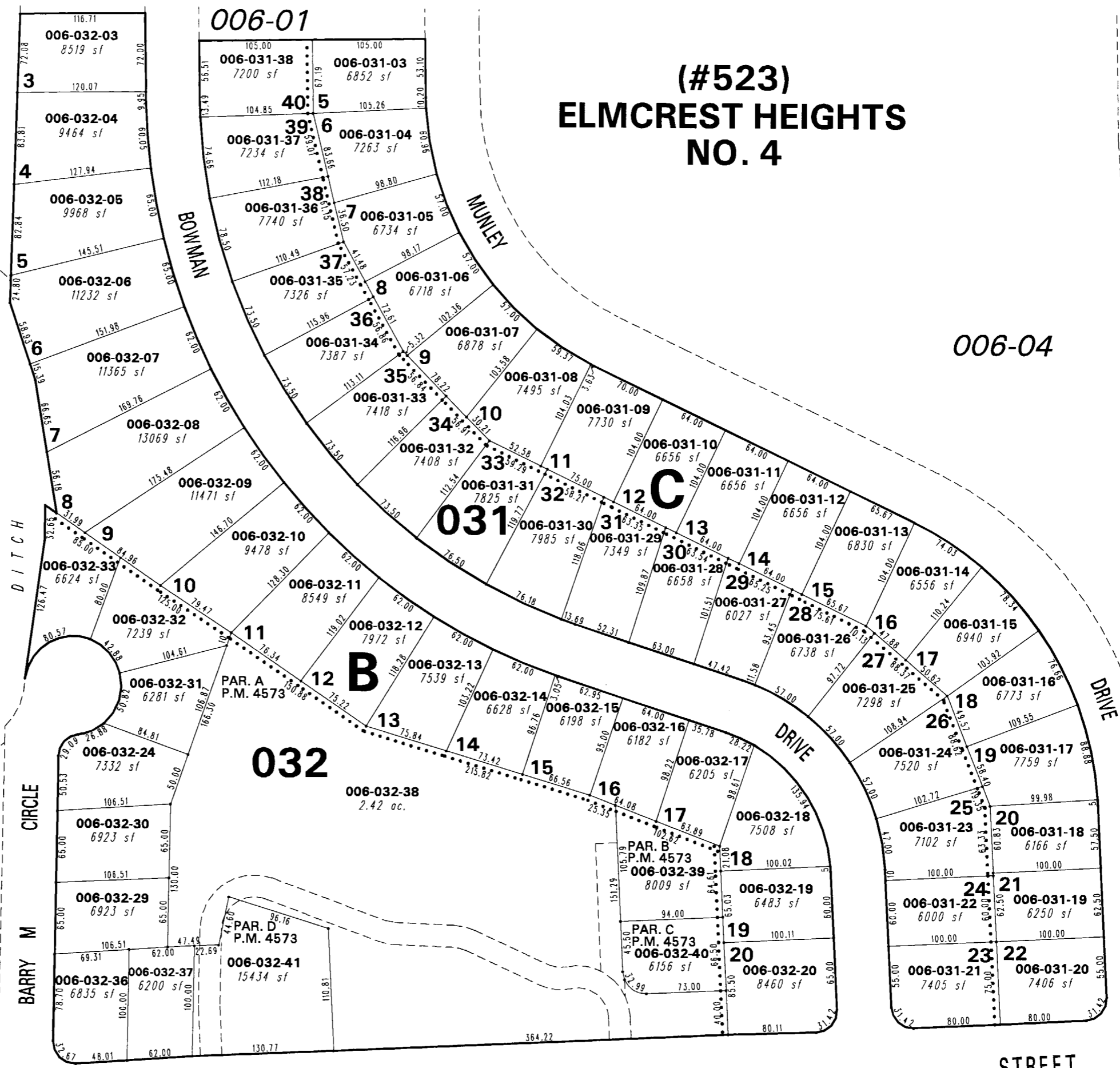


001-25  
MARK ALLEN CIRCLE  
001-28  
**(#551)  
ELMCREST HEIGHTS  
NO. 5**

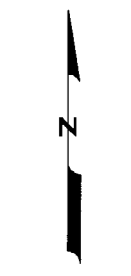
**(#523)  
ELMCREST HEIGHTS  
NO. 4**

006-03  
RUBY AVENUE

PENNSYLVANIA DRIVE  
RHODE ISLAND DRIVE  
HIGHLAND DRIVE  
PORTION OF THE  
NW 1/4 OF SEC. 10  
T19N - R19E



006-04  
MCDONALD DRIVE



1" = 100'



NOTE: This map is prepared for the use of the Washoe County Assessor for assessment and illustrative purposes only. It does not represent a survey of the premises. No liability is assumed as to the sufficiency or the accuracy of the data delineated hereon.

WEST SEVENTH STREET  
Office of Washoe County Assessor, Nevada - Robert W. McGowan

This area previously shown on \_\_\_\_\_

NOTE: Areas of parcels which are less than 2 acres are shown in square feet.

Drawn by IWT -08/24/06  
Revised \_\_\_\_\_