

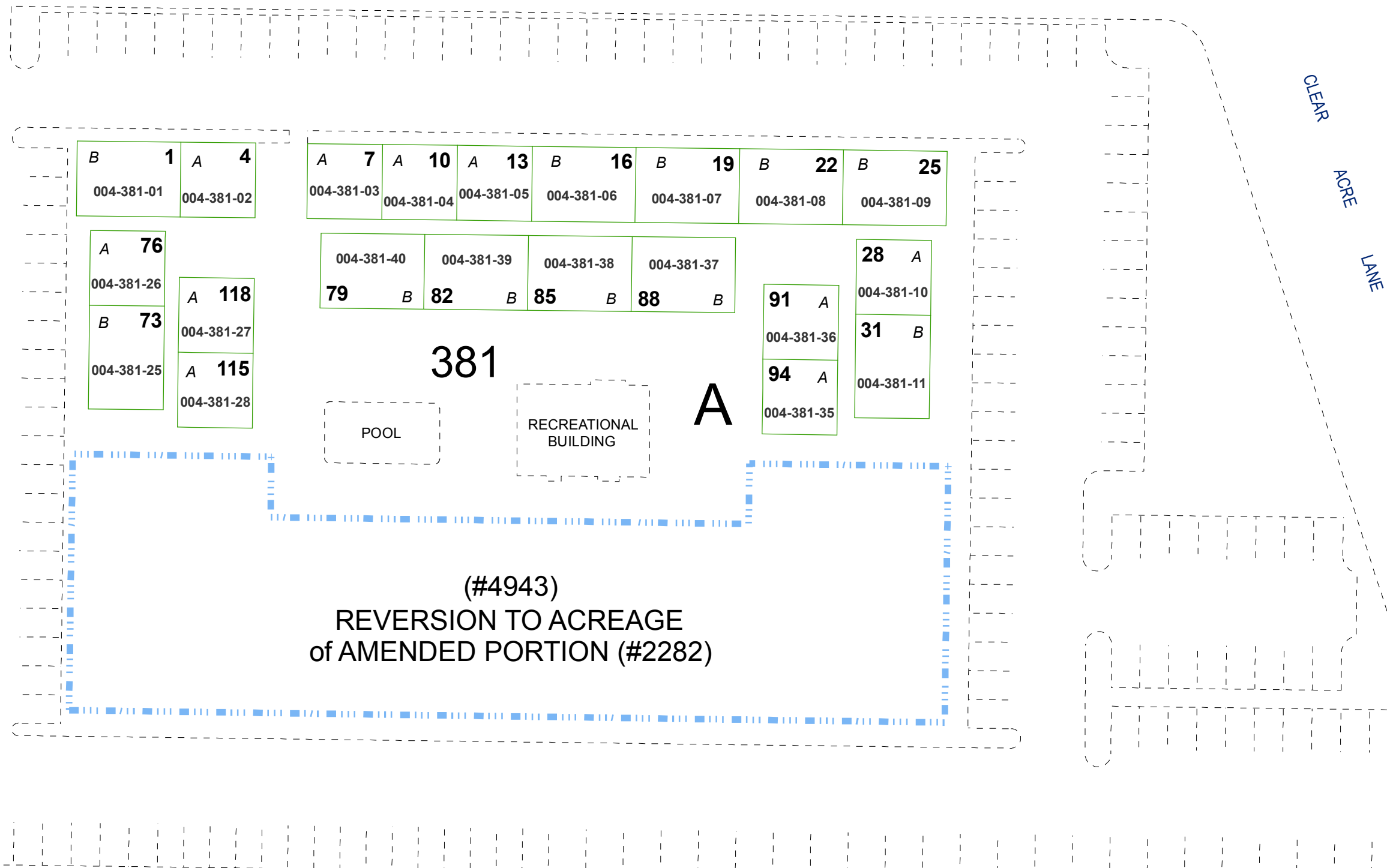
**(#1962)**  
**CLEAR ACRE CONDOMINIUMS**  
 A CONDOMINIUM

PORTION SE 1/4 SECTION 36  
 T20N - R19E

STEELWOOD

LANE

**1st FLOOR UNITS**



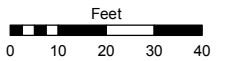
**(#4943)**  
**REVERSION TO ACREAGE**  
 of AMENDED PORTION (#2282)

**B = UNIT TYPE**  
 SEE PAGE 004-38-S4 FOR TYPICAL UNITS

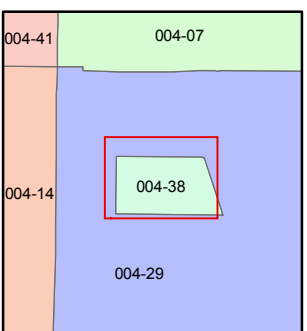
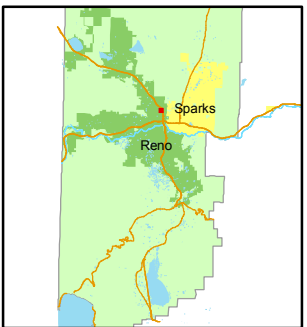
Assessor's Map Number  
**004-38-S1**

STATE OF NEVADA  
**WASHOE COUNTY**  
**ASSESSOR'S OFFICE**  
 Joshua G. Wilson, Assessor

1001 East Ninth Street  
 Building D  
 Reno, Nevada 89512  
 (775) 328-2231



1 inch = 40 feet



created by: KSB 7/13/10

last updated: \_\_\_\_\_

area previously shown on map(s)  
004-29

NOTE: This map was prepared for the use of the Washoe County Assessor for assessment and illustrative purposes only. It does not represent a survey of the premises. No liability is assumed as to the sufficiency or accuracy of the data delineated hereon.