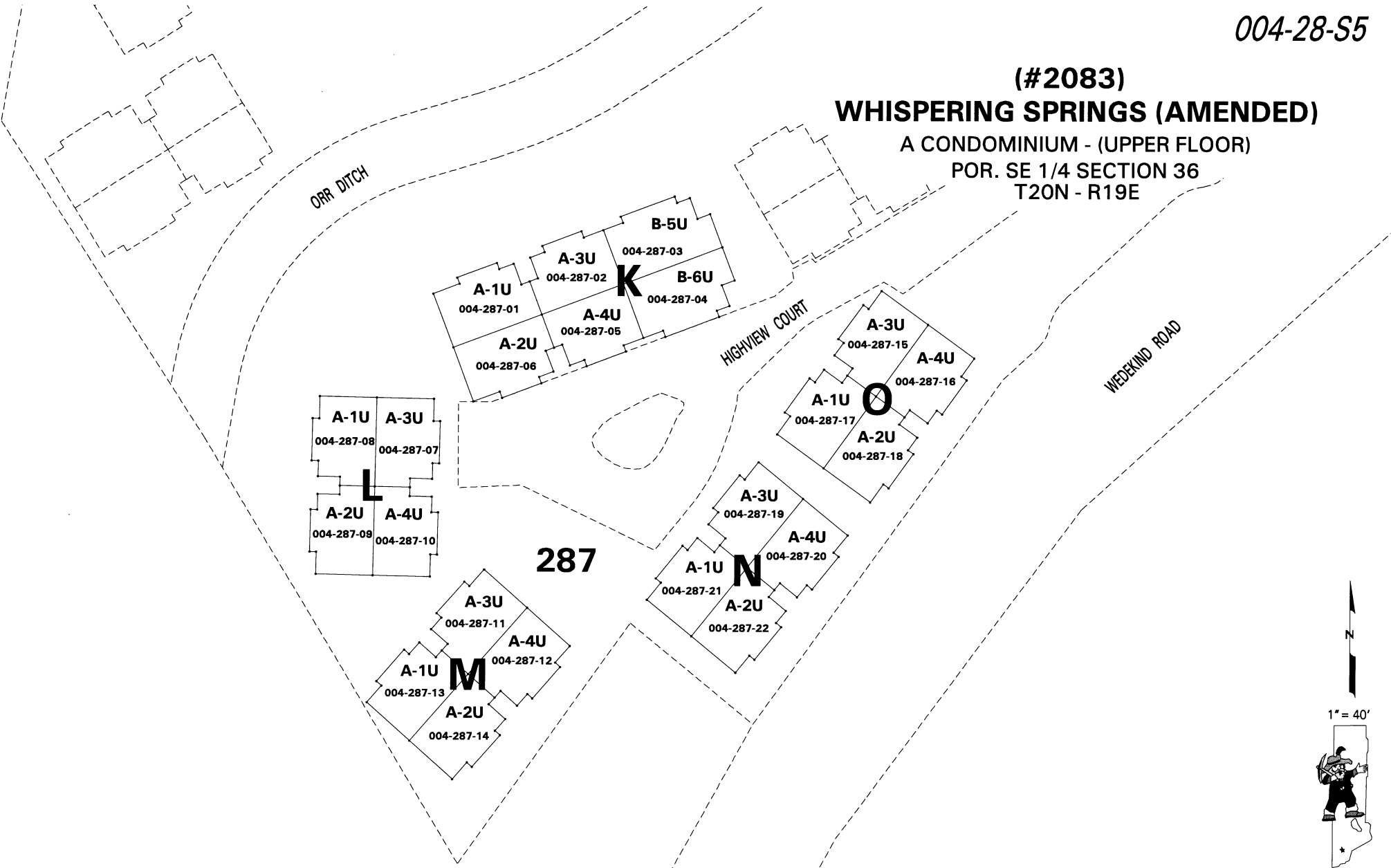


**(#2083)  
WHISPERING SPRINGS (AMENDED)**

A CONDOMINIUM - (UPPER FLOOR)  
POR. SE 1/4 SECTION 36  
T20N - R19E



NOTE: This map is prepared for the use of the Washoe County Assessor for assessment and illustrative purposes only. It does not represent a survey of the premises. No liability is assumed as to the sufficiency or the accuracy of the data delineated hereon.

Office of Washoe County Assessor, Nevada - Robert W. McGowan

This area previously shown on \_\_\_\_\_

NOTE: Areas of parcels which are less than 2 acres are shown in square feet.

Drawn by	HCS 07/09/03
Revised	

