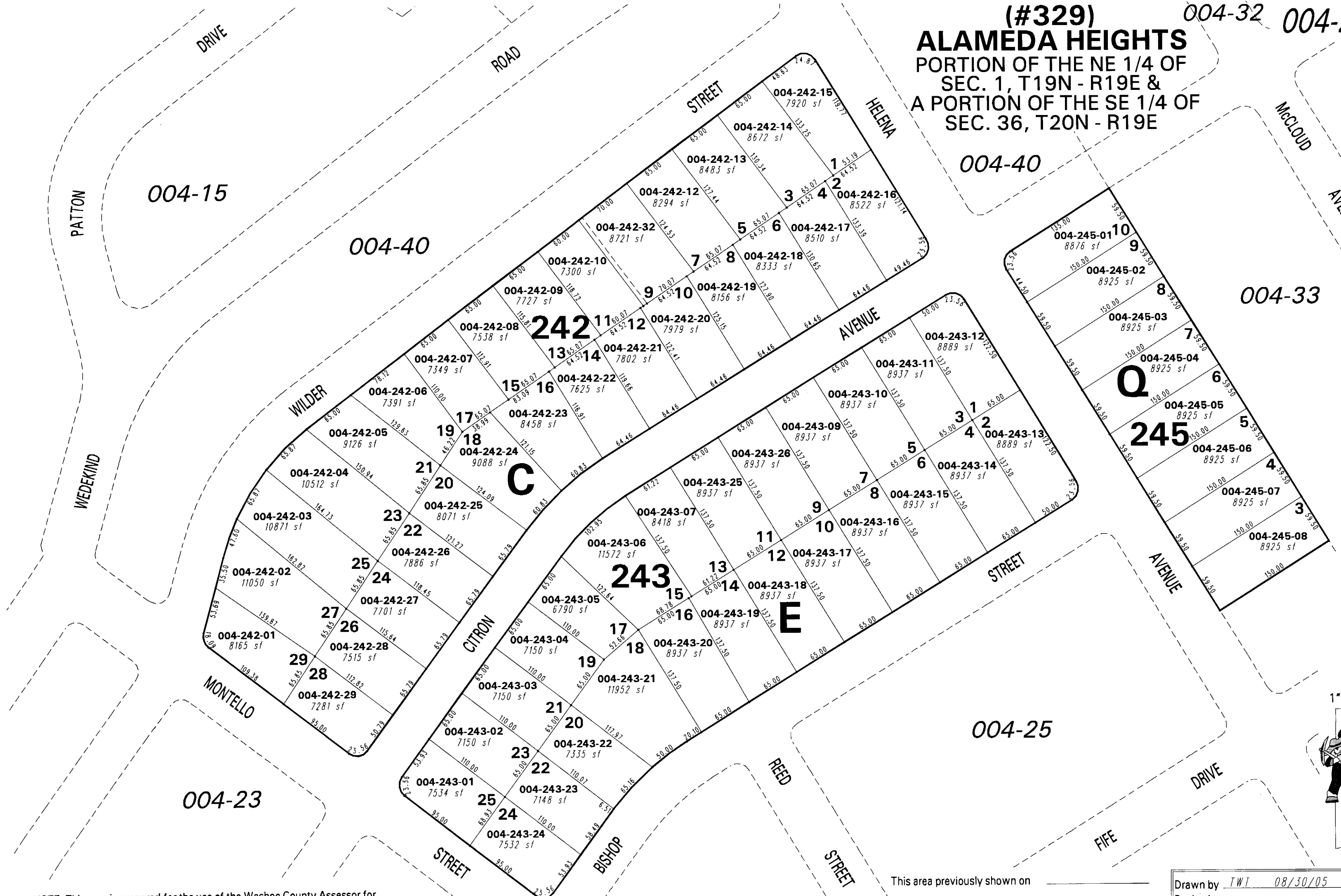


(#329)
ALAMEDA HEIGHTS
 PORTION OF THE NE 1/4 OF
 SEC. 1, T19N - R19E &
 A PORTION OF THE SE 1/4 OF
 SEC. 36, T20N - R19E

004-32 004-24



NOTE: This map is prepared for the use of the Washoe County Assessor for assessment and illustrative purposes only. It does not represent a survey of the premises. No liability is assumed as to the sufficiency or the accuracy of the data delineated hereon.

Office of Washoe County Assessor, Nevada - Robert W. McGowan

This area previously shown on _____

Drawn by TWT 08/30/05
 Revised _____

NOTE: Areas of parcels which are less than 2 acres are shown in square feet.