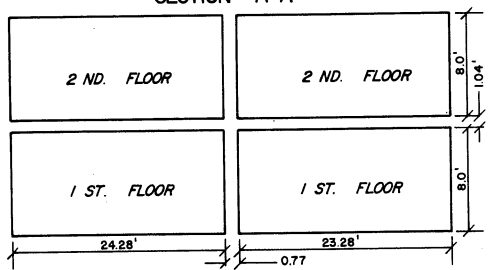


(07)

(#2072)  
 M<sup>c</sup>CARRAN KNOLLS  
 A CONDOMINIUM SUBD.  
 1/96 UNDIVIDED INTEREST  
 PORTION NE. 1/4 SEC. 36  
 T. 20N. - R. 19E.

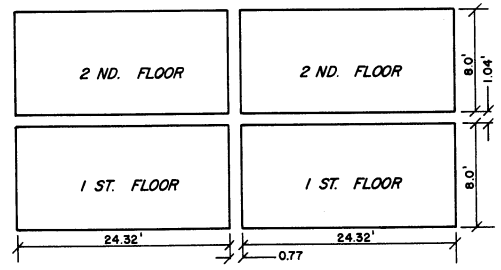
SECTION A-A



UNIT A

UNIT A-I

SECTION B-B

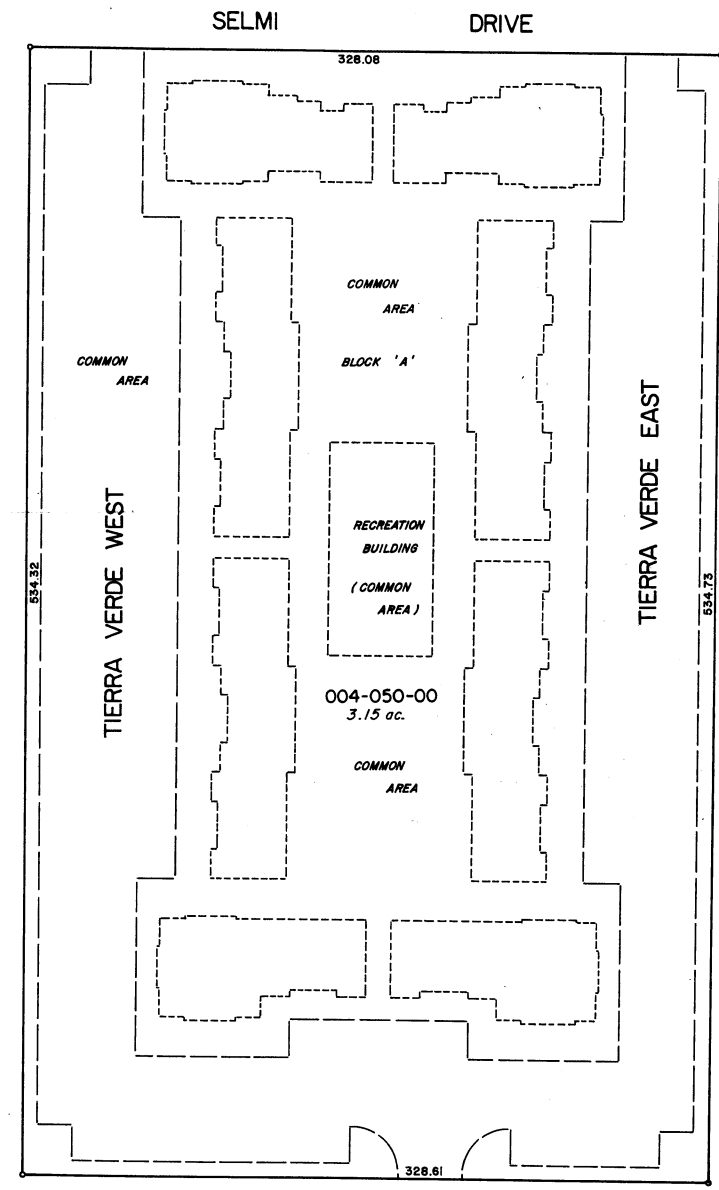


UNIT B

UNIT B-I

NOTE: NOT TO SCALE

NOTE: This Map is prepared for the use of the Washoe County Assessor for Assessment and illustrative purposes only, it does not represent survey of the premises. No liability is assumed as to the sufficiency or accuracy of the data delineated hereon.



04-05

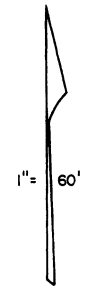
(07)

(14)

N. M<sup>c</sup>CARRAN BLVD.

Assessor's Map County of Washoe, Nevada

NOTE - ASSESSOR'S BLOCK NUMBERS SHOWN IN ELLIPSES  
 ASSESSOR'S PARCEL NUMBERS SHOWN IN CIRCLES



drawn by	GS	2/83
revised	TWT 3/21/08	
superseded		