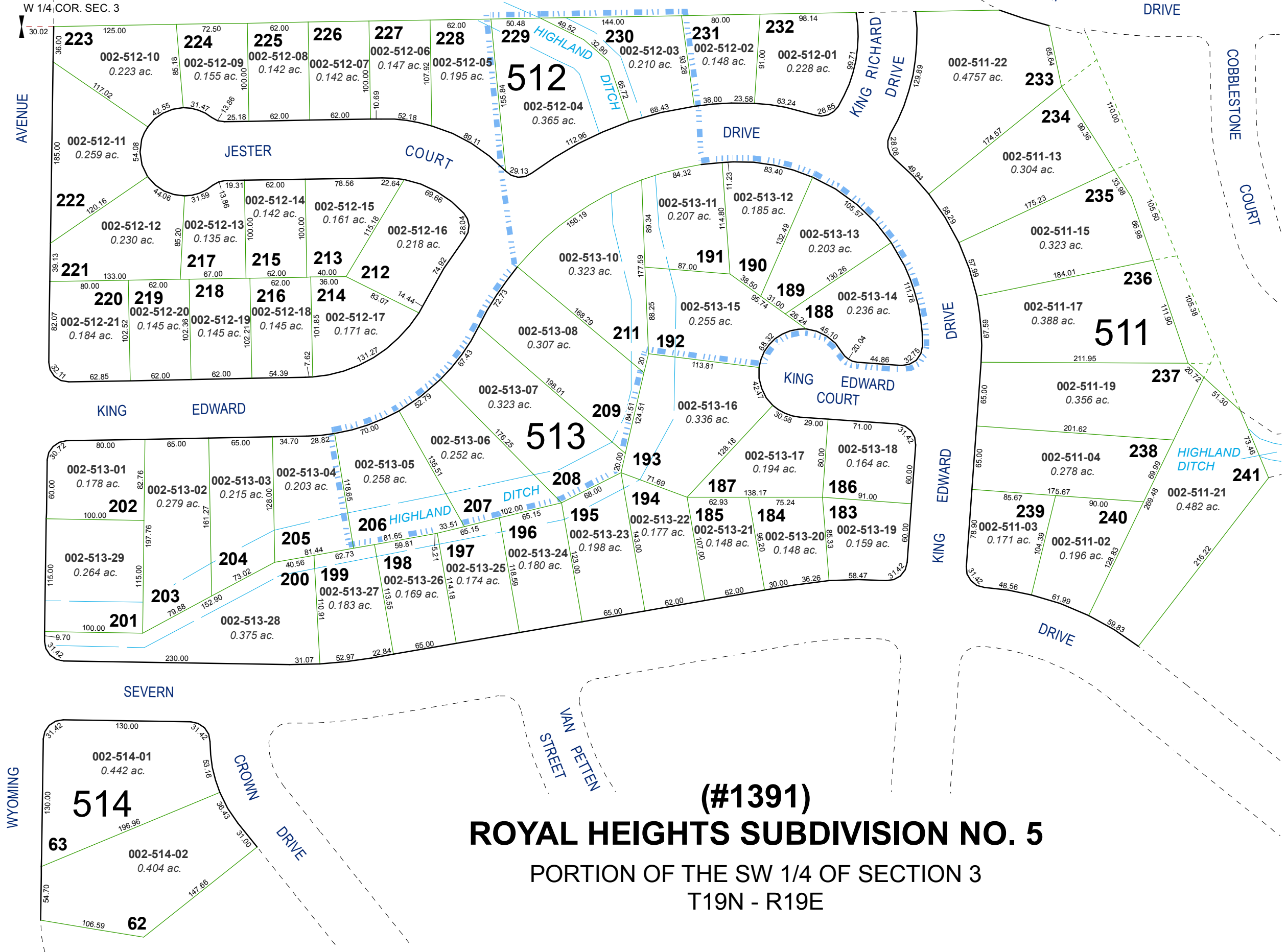


(#1532) AMENDED ROYAL HEIGHTS SUB. NO. 5

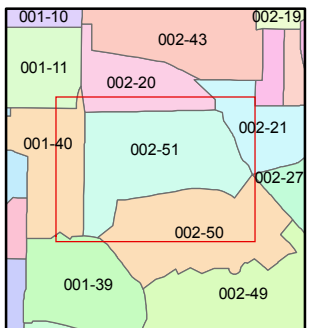
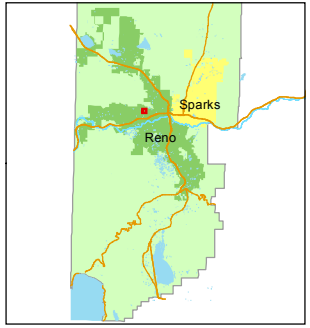
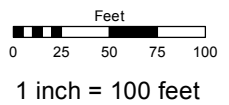


(#1391) ROYAL HEIGHTS SUBDIVISION NO. 5 PORTION OF THE SW 1/4 OF SECTION 3 T19N - R19E

Assessor's Map Number
002-51

STATE OF NEVADA
WASHOE COUNTY
ASSESSOR'S OFFICE
Joshua G. Wilson, Assessor

1001 East Ninth Street
Building D
Reno, Nevada 89512
(775) 328-2231



created by: TWT 4/17/2012
last updated: _____
area previously shown on map(s) _____

NOTE: This map was prepared for the use of the Washoe County Assessor for assessment and illustrative purposes only. It does not represent a survey of the premises. No liability is assumed as to the sufficiency or accuracy of the data delineated hereon.