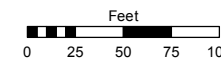


# (#1391) ROYAL HEIGHTS SUBDIVISION NO. 5

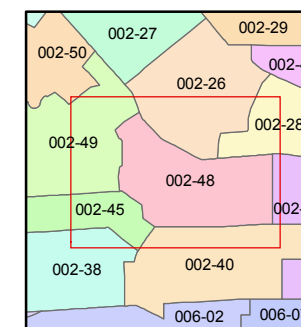
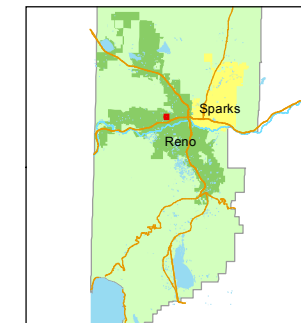
PORTION OF THE S 1/2 OF SECTION 3  
T19N - R19E

STATE OF NEVADA  
**WASHOE COUNTY**  
ASSESSOR'S OFFICE  
Joshua G. Wilson, Assessor

1001 East Ninth Street  
Building D  
Reno, Nevada 89512  
(775) 328-2231



1 inch = 100 feet

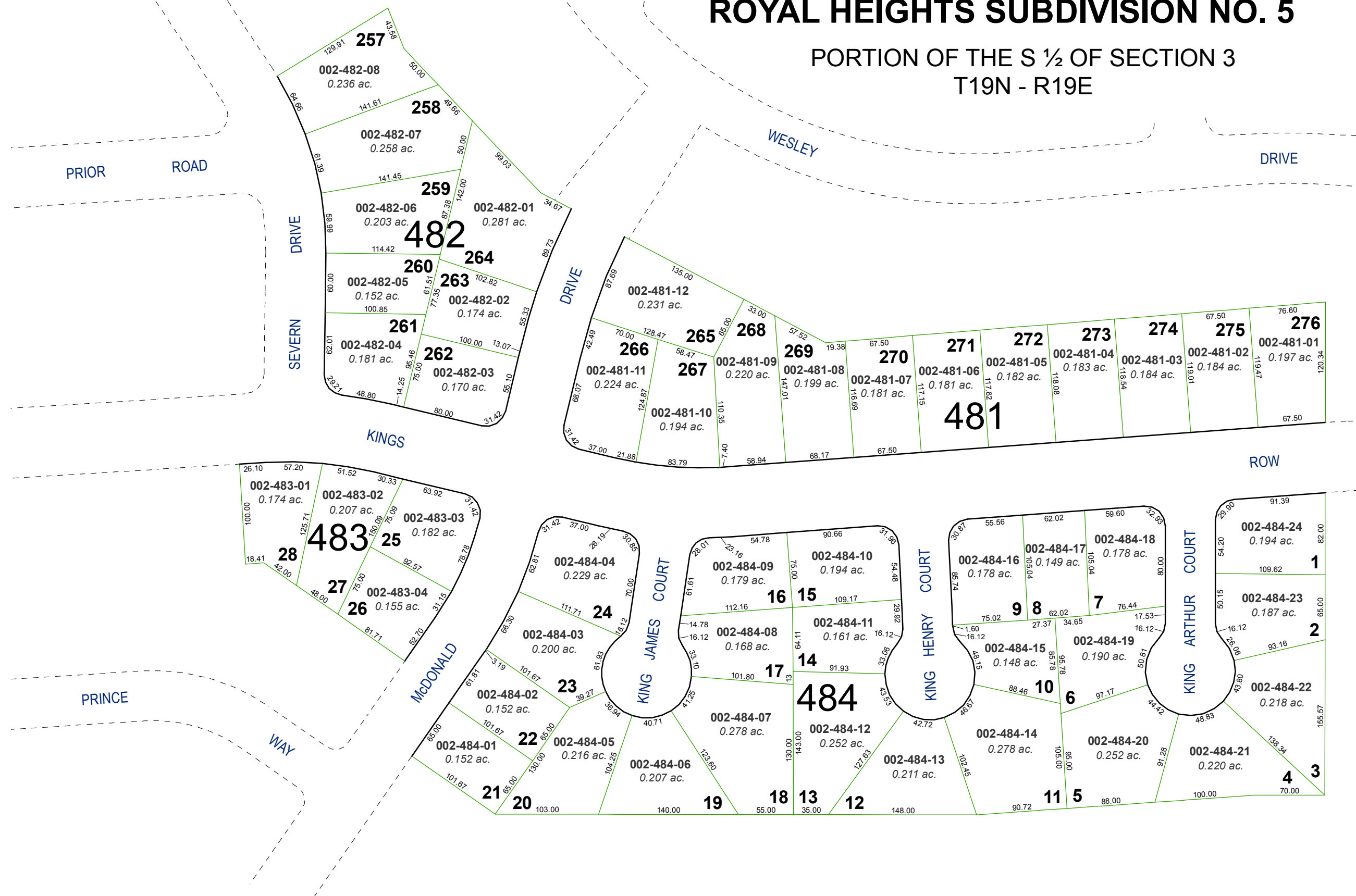


created by: TWT 4/12/2012

last updated: \_\_\_\_\_

area previously shown on map(s)  
\_\_\_\_\_

NOTE: This map was prepared for the use of the Washoe County Assessor for assessment and illustrative purposes only. It does not represent a survey of the premises. No liability is assumed as to the sufficiency or accuracy of the data delineated hereon.



PRIOR ROAD

SEVERN DRIVE

WESLEY DRIVE

DRIVE

KINGS DRIVE

ROW

PRINCE WAY

MCDONALD

KING JAMES COURT

KING HENRY COURT

KING ARTHUR COURT