

(#834) MONTE VISTA ESTATES

PORTION OF THE
NW 1/4 OF SECTION 3
T19N - R19E

(#1008) VISTA LA JOLLA SUBDIVISION

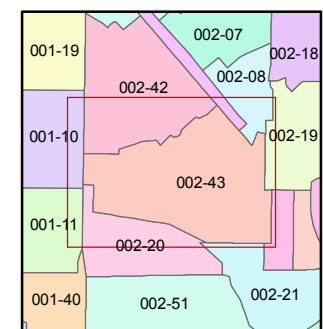
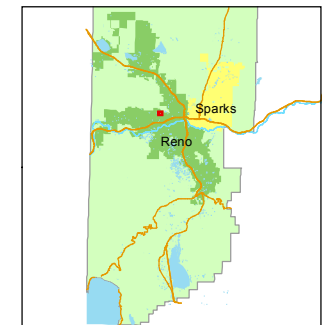
Assessor's Map Number
002-43

STATE OF NEVADA
WASHOE COUNTY
ASSESSOR'S OFFICE
Joshua G. Wilson, Assessor

1001 East Ninth Street
Building D
Reno, Nevada 89512
(775) 328-2231

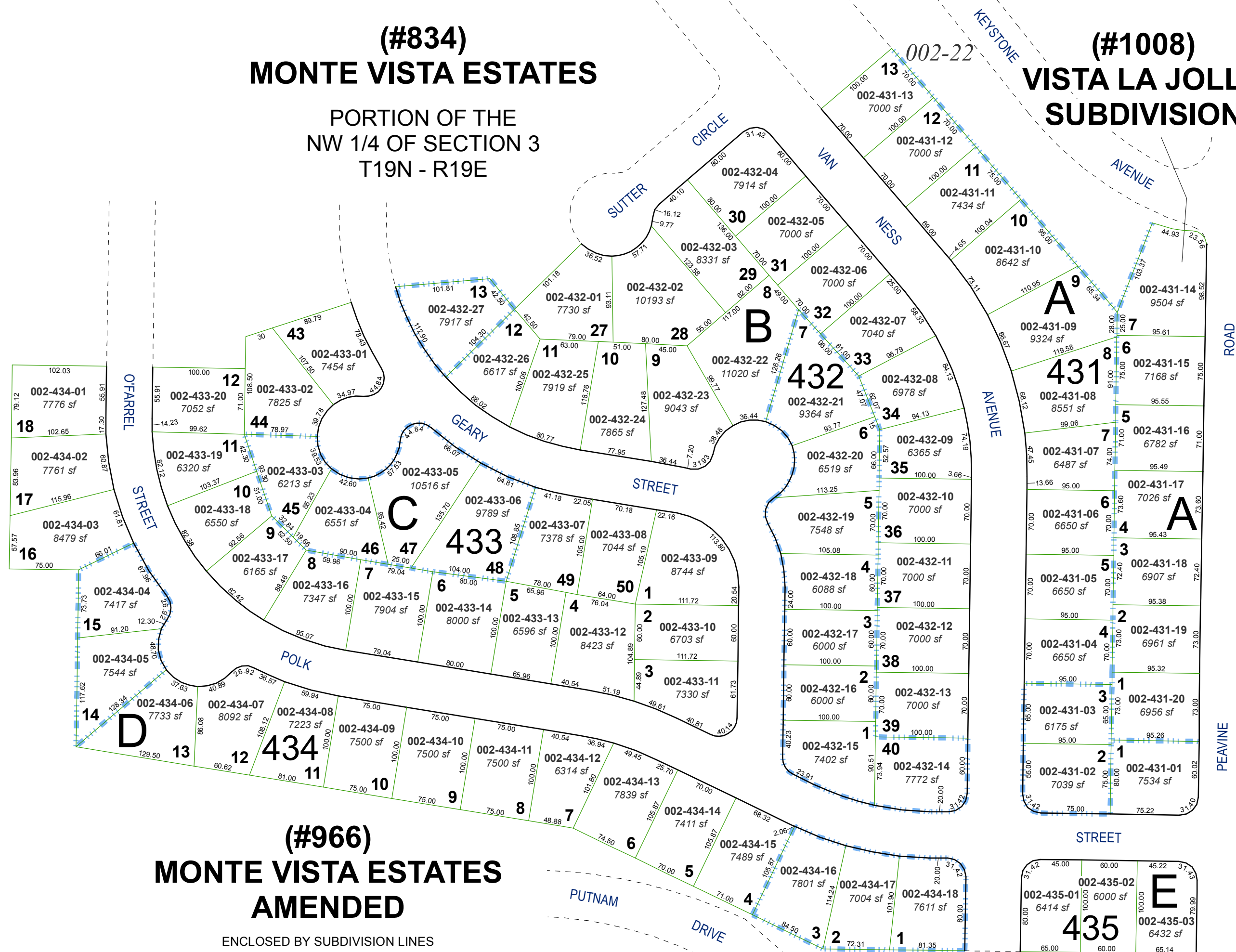


Feet
0 25 50 75 100
1 inch = 100 feet



created by: TWT 4/10/2012
last updated: _____
area previously shown on map(s) _____

NOTE: This map was prepared for the use of the Washoe County Assessor for assessment and illustrative purposes only. It does not represent a survey of the premises. No liability is assumed as to the sufficiency or accuracy of the data delineated hereon.



(#966) MONTE VISTA ESTATES AMENDED

ENCLOSED BY SUBDIVISION LINES