

# AMPHITHEATER SUBDIVISIONS

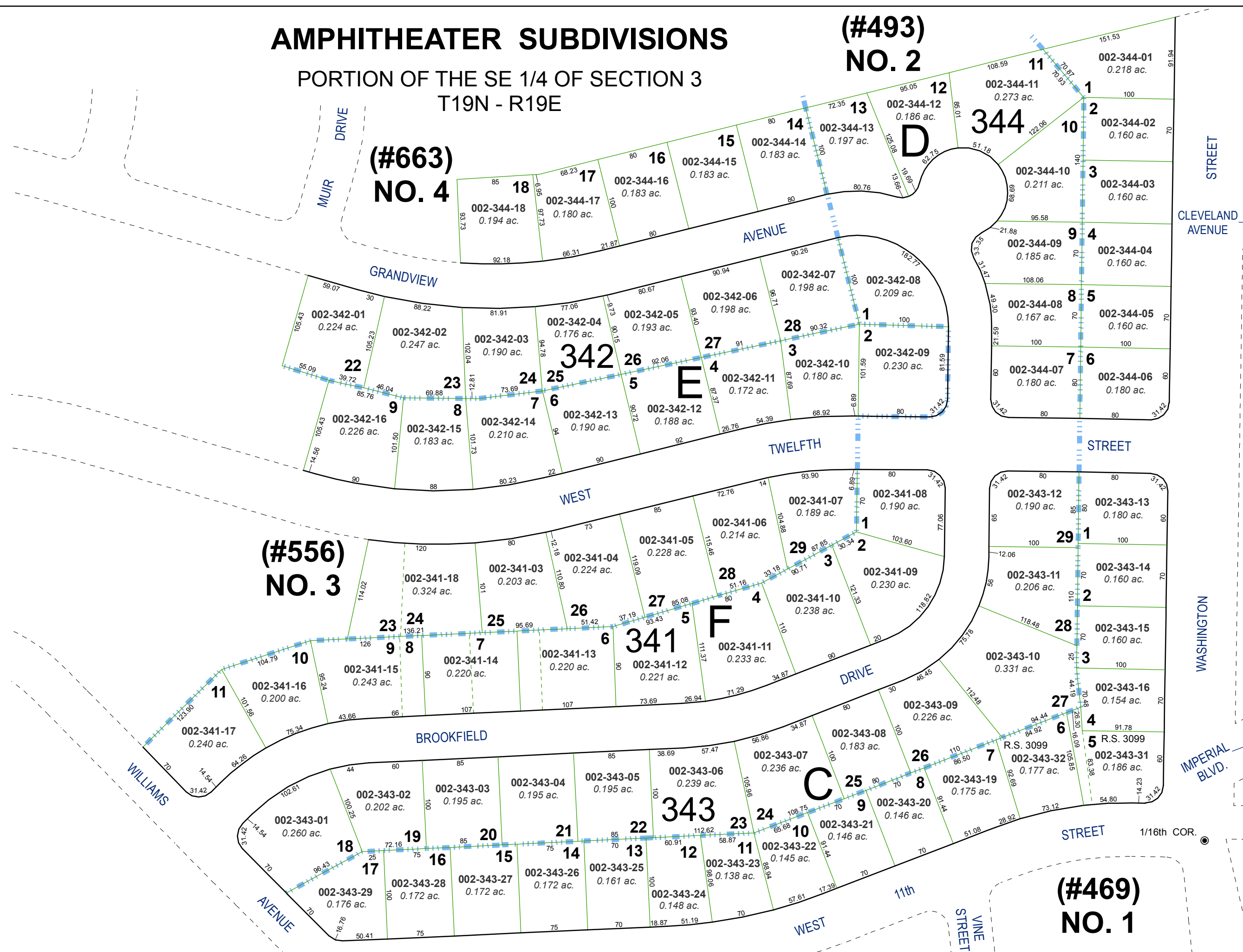
PORTION OF THE SE 1/4 OF SECTION 3  
T19N - R19E

(#493)  
NO. 2

(#663)  
NO. 4

(#556)  
NO. 3

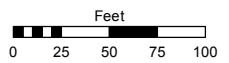
(#469)  
NO. 1



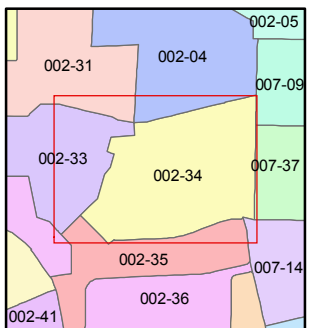
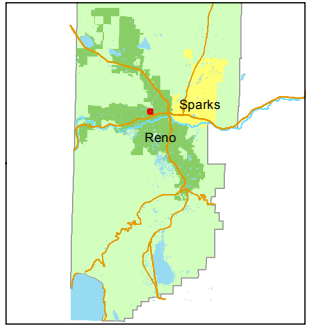
Assessor's Map Number  
**002-34**

STATE OF NEVADA  
**WASHOE COUNTY**  
ASSESSOR'S OFFICE  
Joshua G. Wilson, Assessor

1001 East Ninth Street  
Building D  
Reno, Nevada 89512  
(775) 328-2231



1 inch = 100 feet



created by: TWT 4/3/2012

last updated: \_\_\_\_\_

area previously shown on map(s) \_\_\_\_\_

NOTE: This map was prepared for the use of the Washoe County Assessor for assessment and illustrative purposes only. It does not represent a survey of the premises. No liability is assumed as to the sufficiency or accuracy of the data delineated hereon.