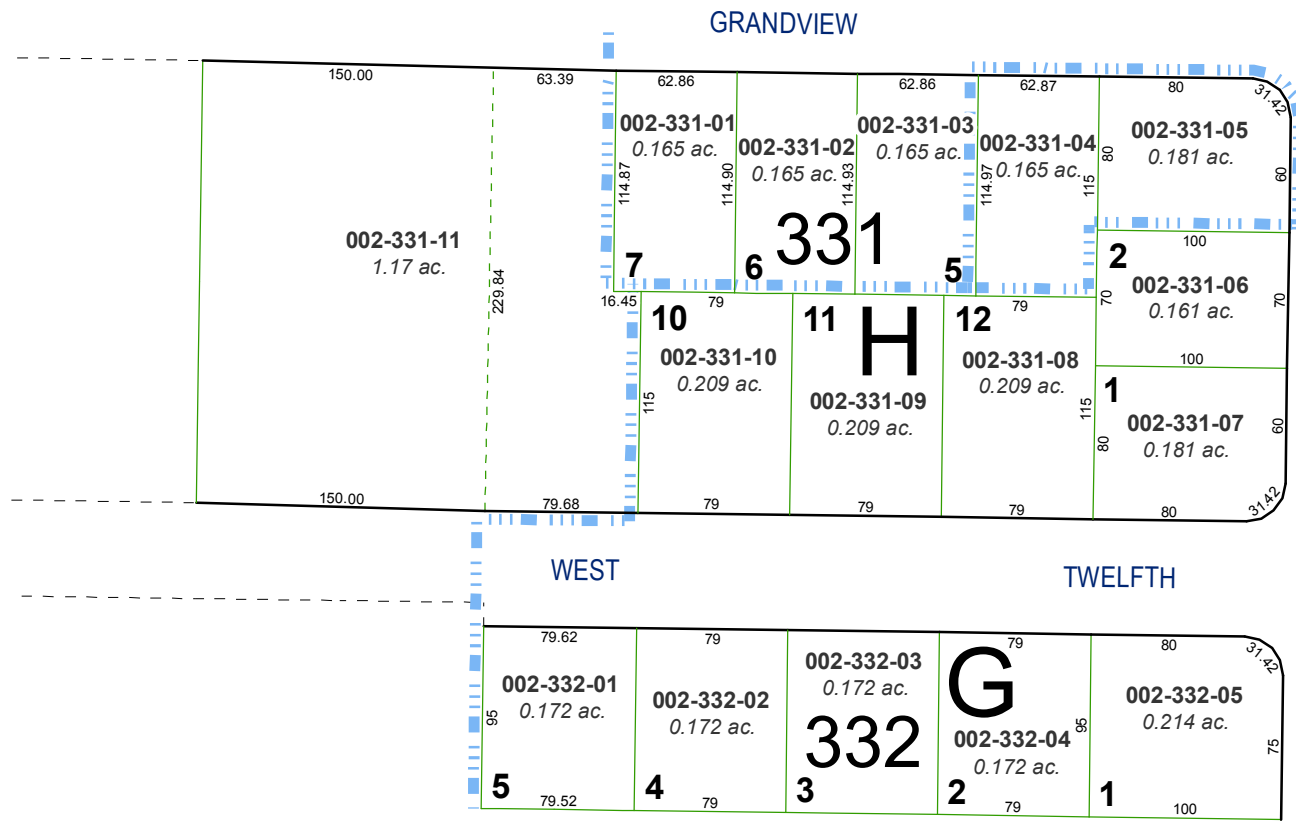
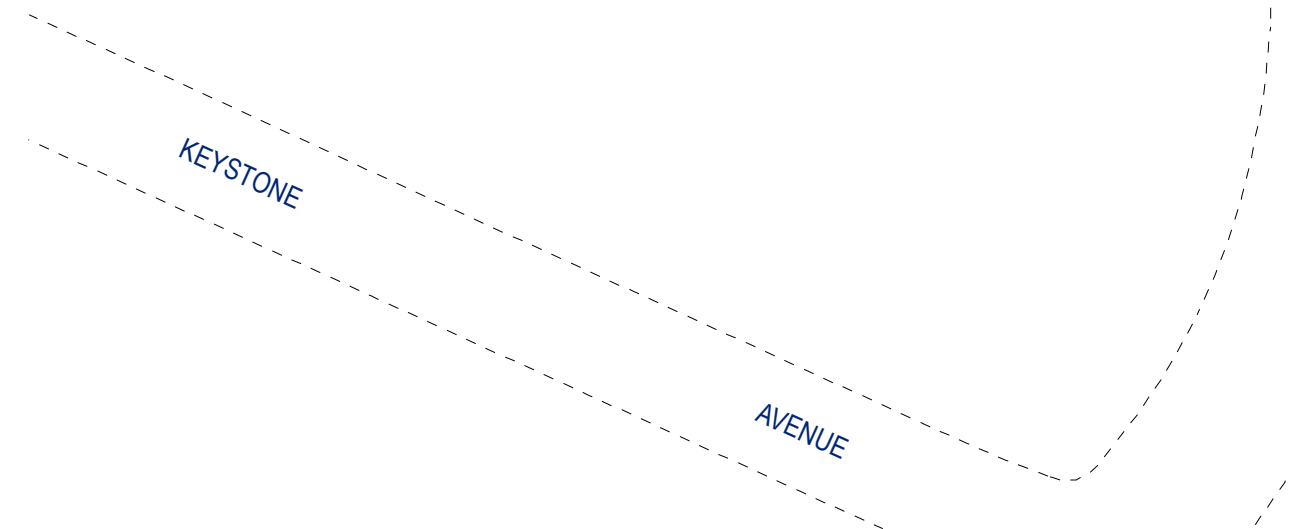


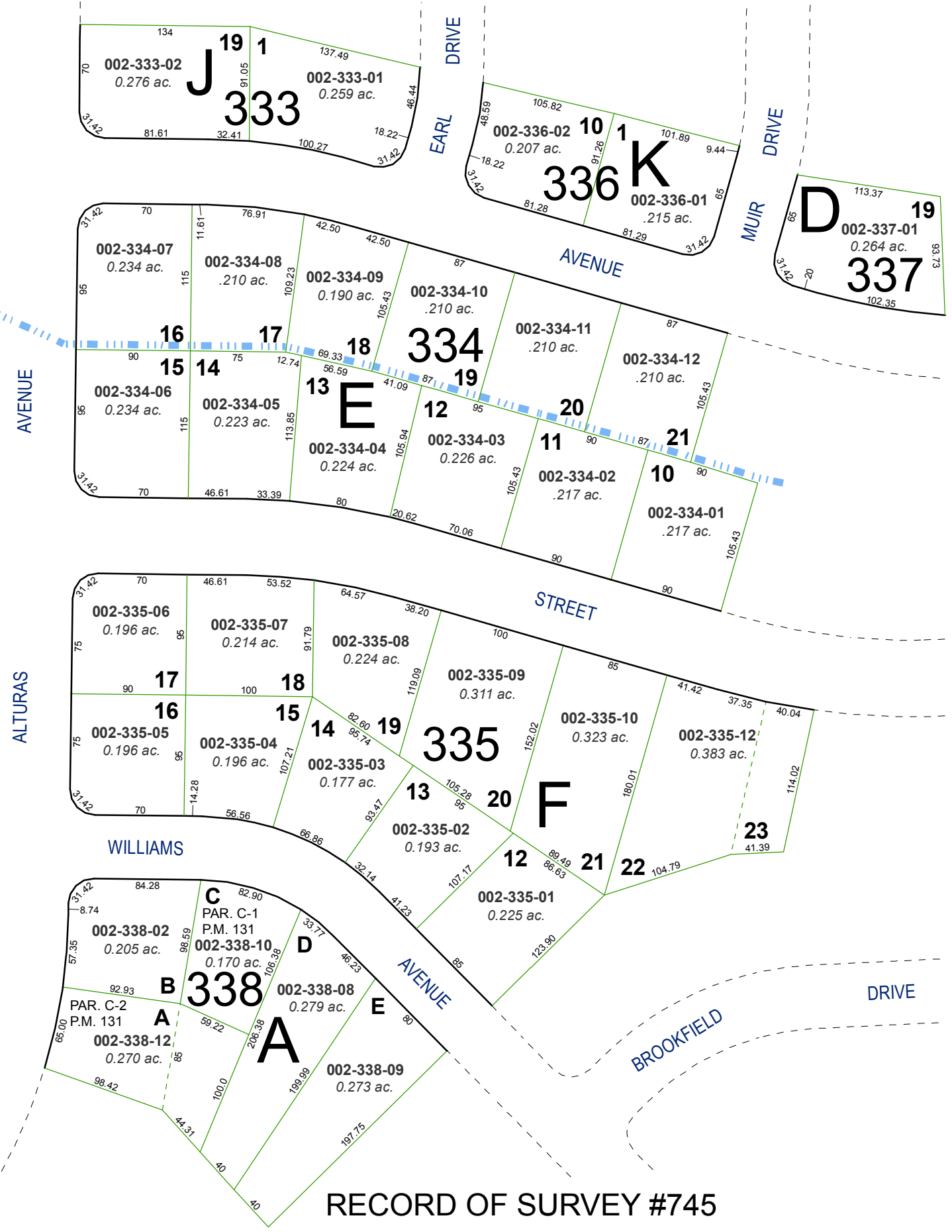
PORTION OF THE SE 1/4 OF SECTION 3
T19N - R19E



**(#556)
AMPHITHEATER
SUBDIVISION NO. 3**



**(#663)
AMPHITHEATER SUBDIVISION NO. 4**

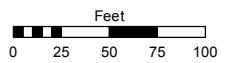


RECORD OF SURVEY #745

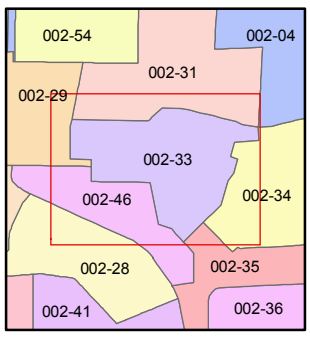
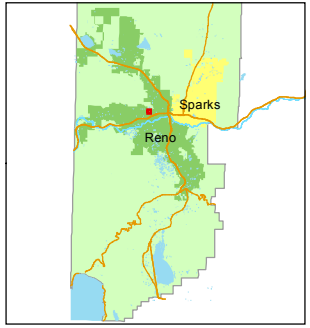
Assessor's Map Number
002-33

STATE OF NEVADA
WASHOE COUNTY
ASSESSOR'S OFFICE
Joshua G. Wilson, Assessor

1001 East Ninth Street
Building D
Reno, Nevada 89512
(775) 328-2231



1 inch = 100 feet



created by: TWT 4/2/2012

last updated: _____

area previously shown on map(s)

NOTE: This map was prepared for the use of the Washoe County Assessor for assessment and illustrative purposes only. It does not represent a survey of the premises. No liability is assumed as to the sufficiency or accuracy of the data delineated hereon.