

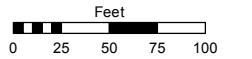
(#518) RENO HIGHLANDS SUBDIVISION NO. 2 - UNIT NO. 2

Assessor's Map Number

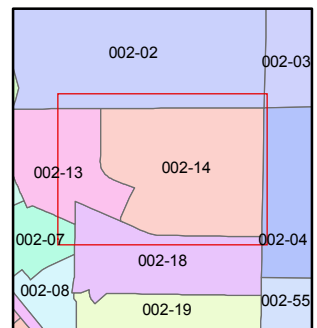
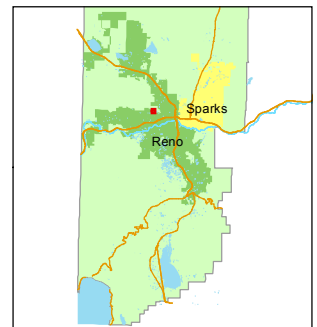
002-14

STATE OF NEVADA
WASHOE COUNTY
ASSESSOR'S OFFICE
Joshua G. Wilson, Assessor

1001 East Ninth Street
Building D
Reno, Nevada 89512
(775) 328-2231



1 inch = 100 feet

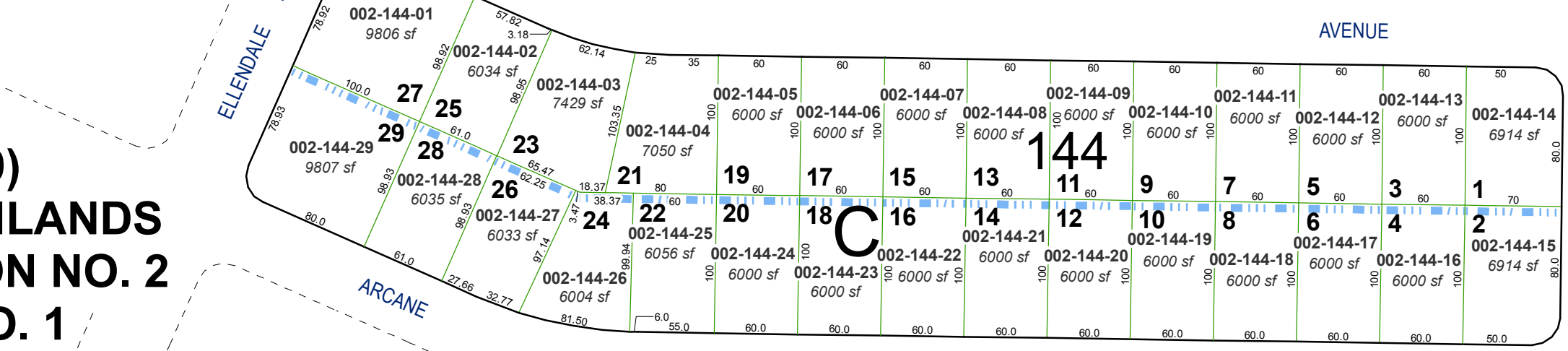
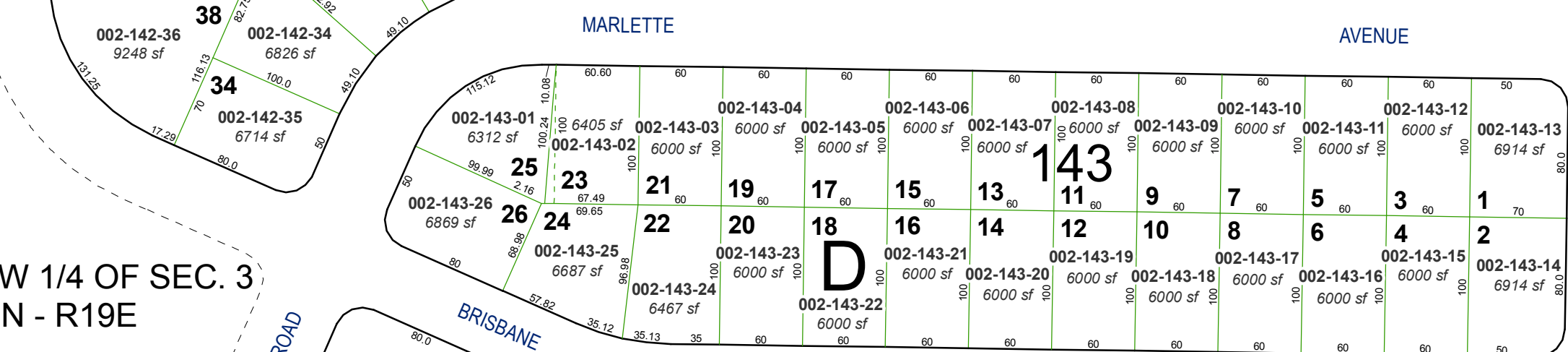
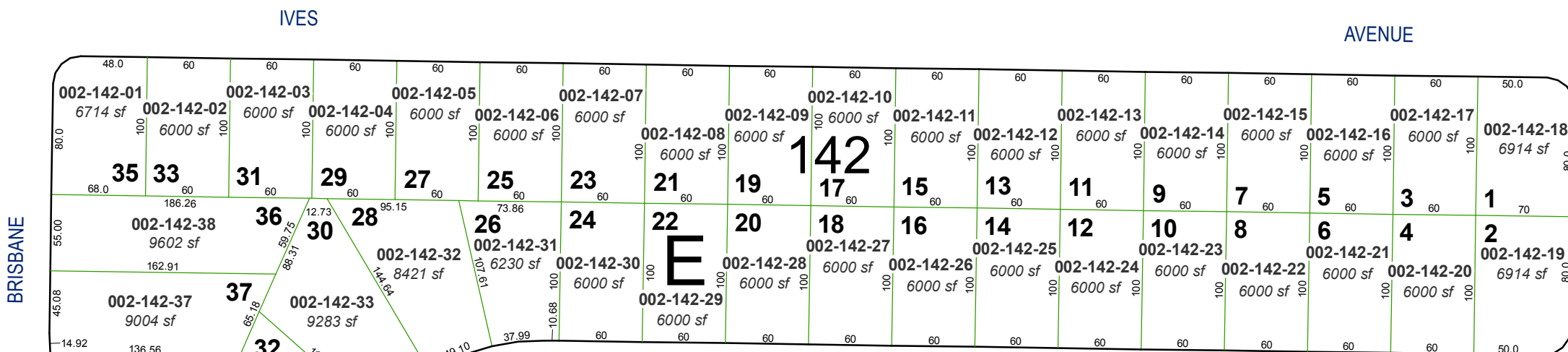
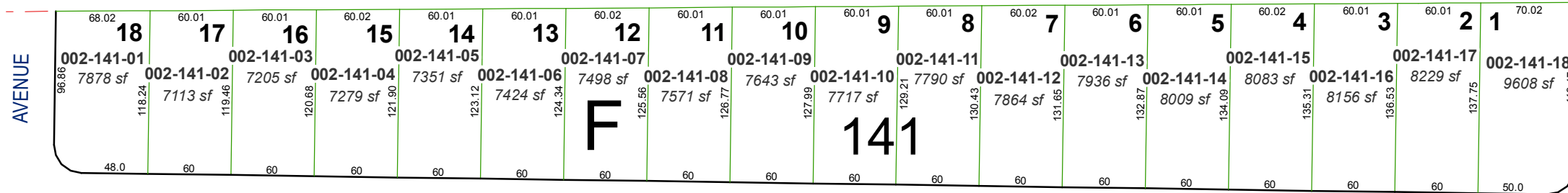


created by: TWT 3/23/2012

last updated: _____

area previously shown on map(s) _____

NOTE: This map was prepared for the use of the Washoe County Assessor for assessment and illustrative purposes only. It does not represent a survey of the premises. No liability is assumed as to the sufficiency or accuracy of the data delineated hereon.



AVENUE

BRISBANE

WARD PLACE

POR. OF NW 1/4 OF SEC. 3
T19N - R19E

ELLENDALE ROAD

ARCANE

34

3

DRIVE

COLEMAN

(#509) RENO HIGHLANDS SUBDIVISION NO. 2 UNIT NO. 1