

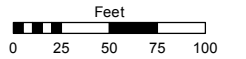
# (#610) RENO HIGHLANDS SUBDIVISION NO. 3

PORTION OF THE  
NW 1/4 OF SECTION 3  
T19N - R19E

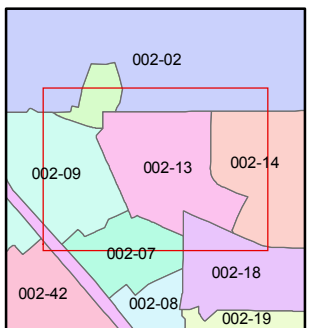
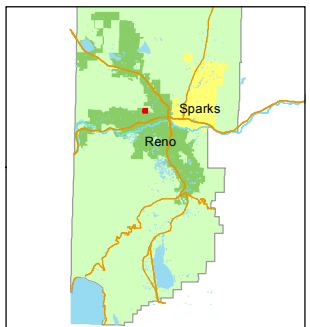
Assessor's Map Number  
**002-13**

STATE OF NEVADA  
**WASHOE COUNTY**  
ASSESSOR'S OFFICE  
Joshua G. Wilson, Assessor

1001 East Ninth Street  
Building D  
Reno, Nevada 89512  
(775) 328-2231



1 inch = 100 feet



created by: TWT 3/21/2012

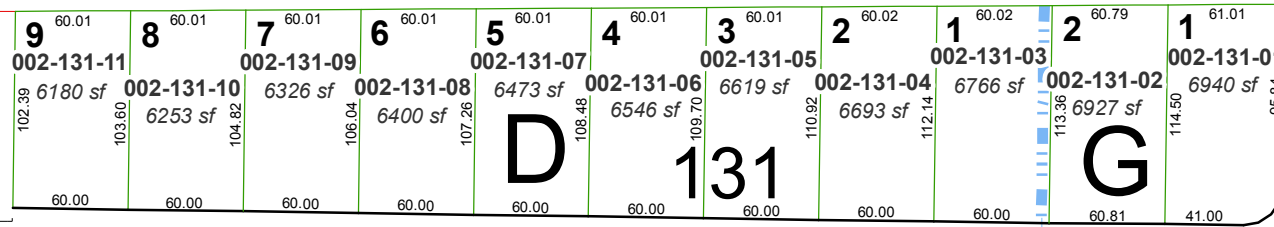
last updated: \_\_\_\_\_

area previously shown on map(s) \_\_\_\_\_

NOTE: This map was prepared for the use of the Washoe County Assessor for assessment and illustrative purposes only. It does not represent a survey of the premises. No liability is assumed as to the sufficiency or accuracy of the data delineated hereon.



779.95'



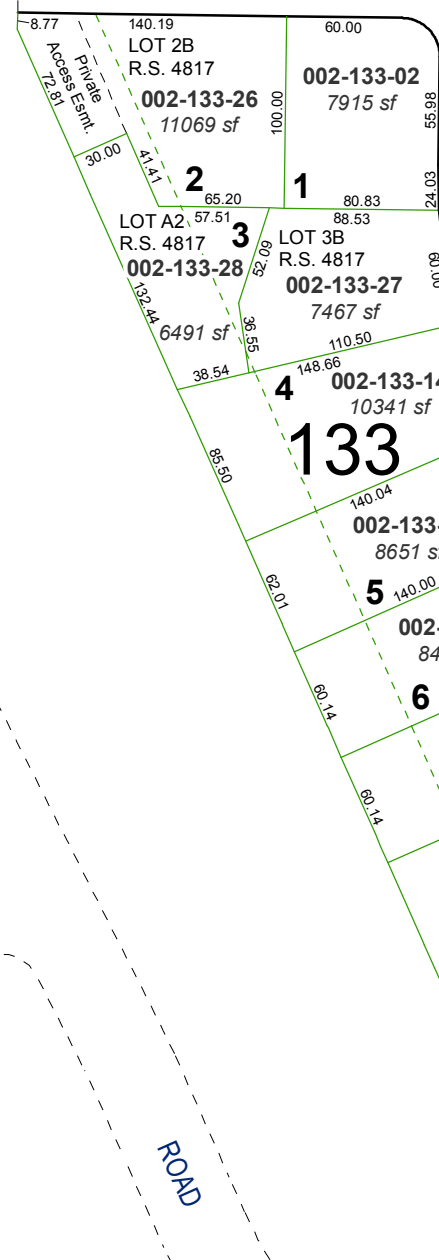
1198.26'  
N88-49-40E

T20N - R19E  
T19N - R19E

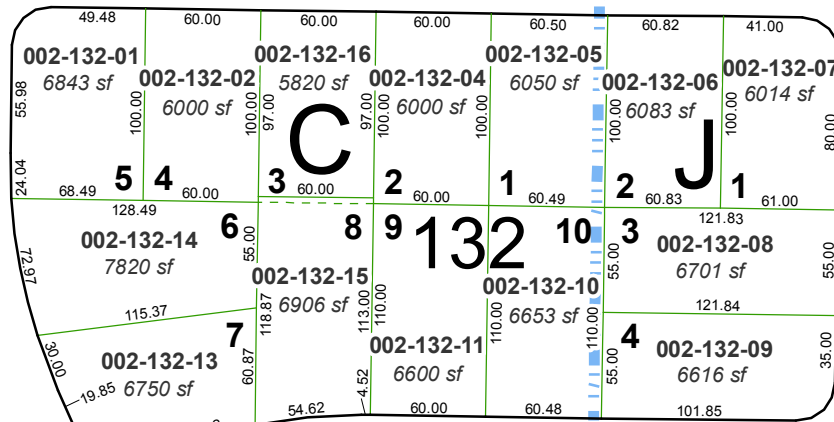


IVES AVENUE

IVES AVENUE

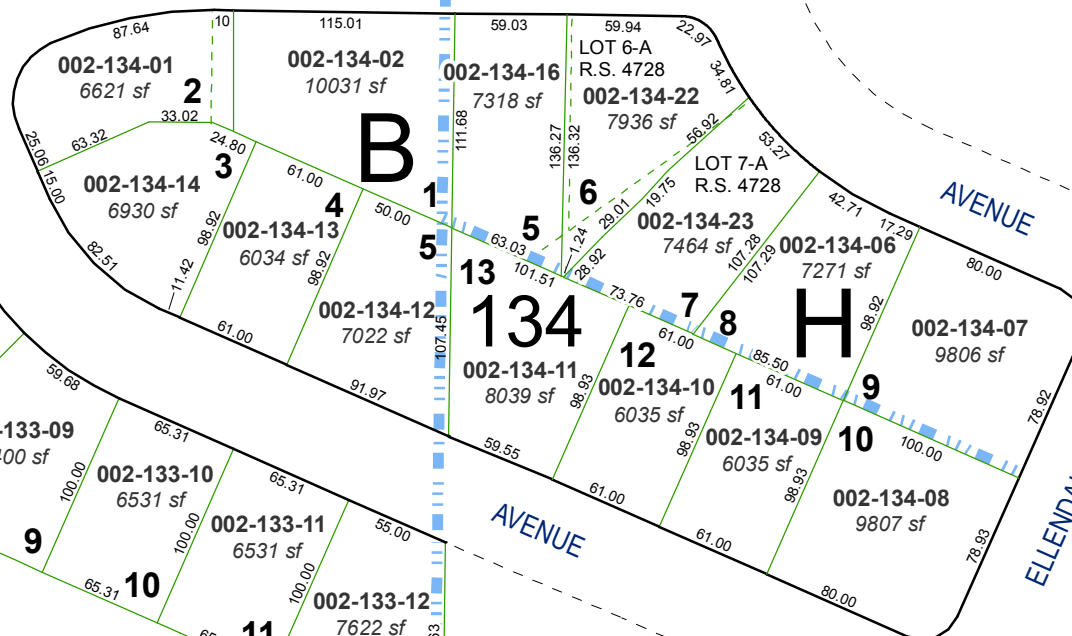


ARCANE AVENUE



WARD PLACE

WARD PLACE



BRISBANE AVENUE

BRISBANE AVENUE

ELLENDALE AVENUE

ROAD

KEYSTONE AVENUE

PEAVINE COURT

COTTAGE COURT

# (#509) RENO HIGHLANDS SUBDIVISION NO. 2 UNIT NO. 1

# (#518) RENO HIGHLANDS SUBDIVISION NO. 2 UNIT NO. 2