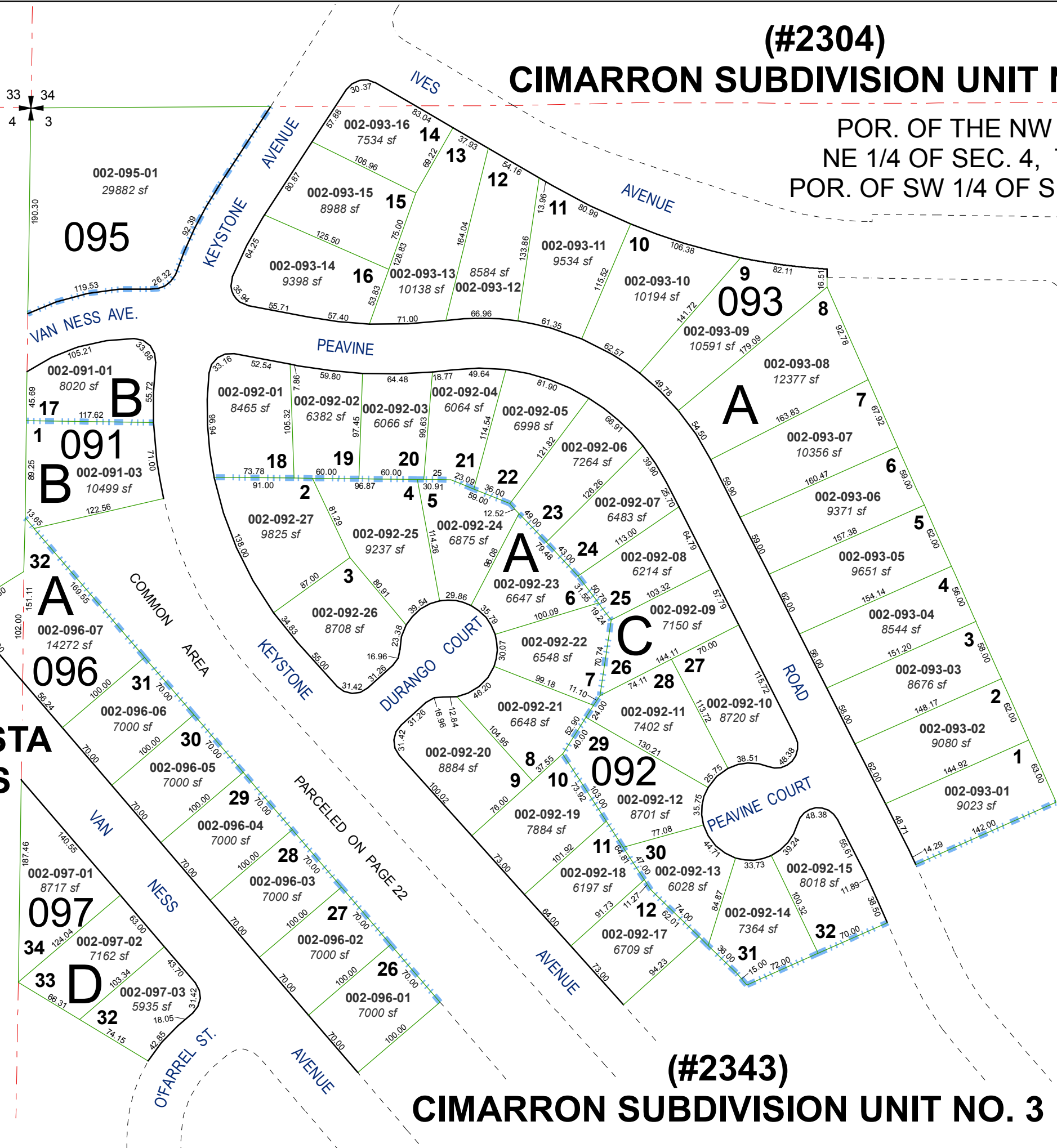


# (#2304) CIMARRON SUBDIVISION UNIT NO. 2

POR. OF THE NW 1/4 OF SEC. 3 &  
NE 1/4 OF SEC. 4, T19N - R19E AND  
POR. OF SW 1/4 OF SEC. 34, T20N - R19E

T20N - R19E  
T19N - R19E



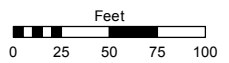
## (#834) MONTE VISTA ESTATES

# (#2343) CIMARRON SUBDIVISION UNIT NO. 3

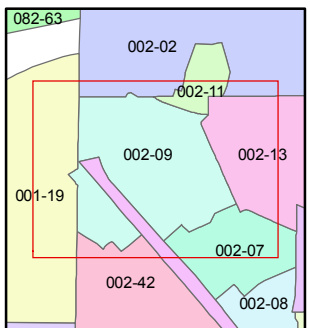
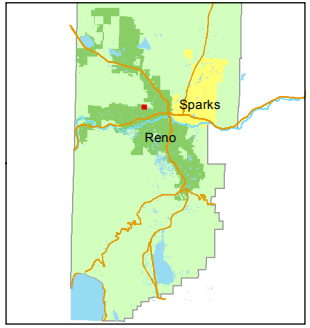
Assessor's Map Number  
**002-09**

STATE OF NEVADA  
**WASHOE COUNTY**  
ASSESSOR'S OFFICE  
Joshua G. Wilson, Assessor

1001 East Ninth Street  
Building D  
Reno, Nevada 89512  
(775) 328-2231



1 inch = 100 feet



created by: TWT 3/16/2012

last updated: \_\_\_\_\_

area previously shown on map(s)  
\_\_\_\_\_

NOTE: This map was prepared for the use of the Washoe County Assessor for assessment and illustrative purposes only. It does not represent a survey of the premises. No liability is assumed as to the sufficiency or accuracy of the data delineated hereon.