

Assessor's Map Number

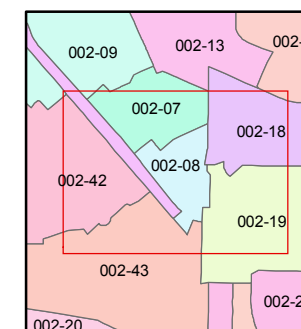
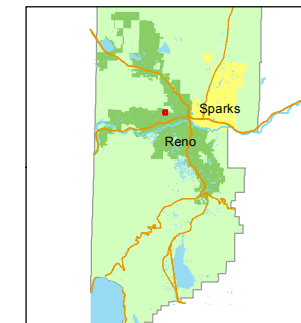
002-08

STATE OF NEVADA
WASHOE COUNTY
ASSESSOR'S OFFICE
Joshua G. Wilson, Assessor

1001 East Ninth Street
Building D
Reno, Nevada 89512
(775) 328-2231



1 inch = 100 feet



created by: TWT 3/15/2012

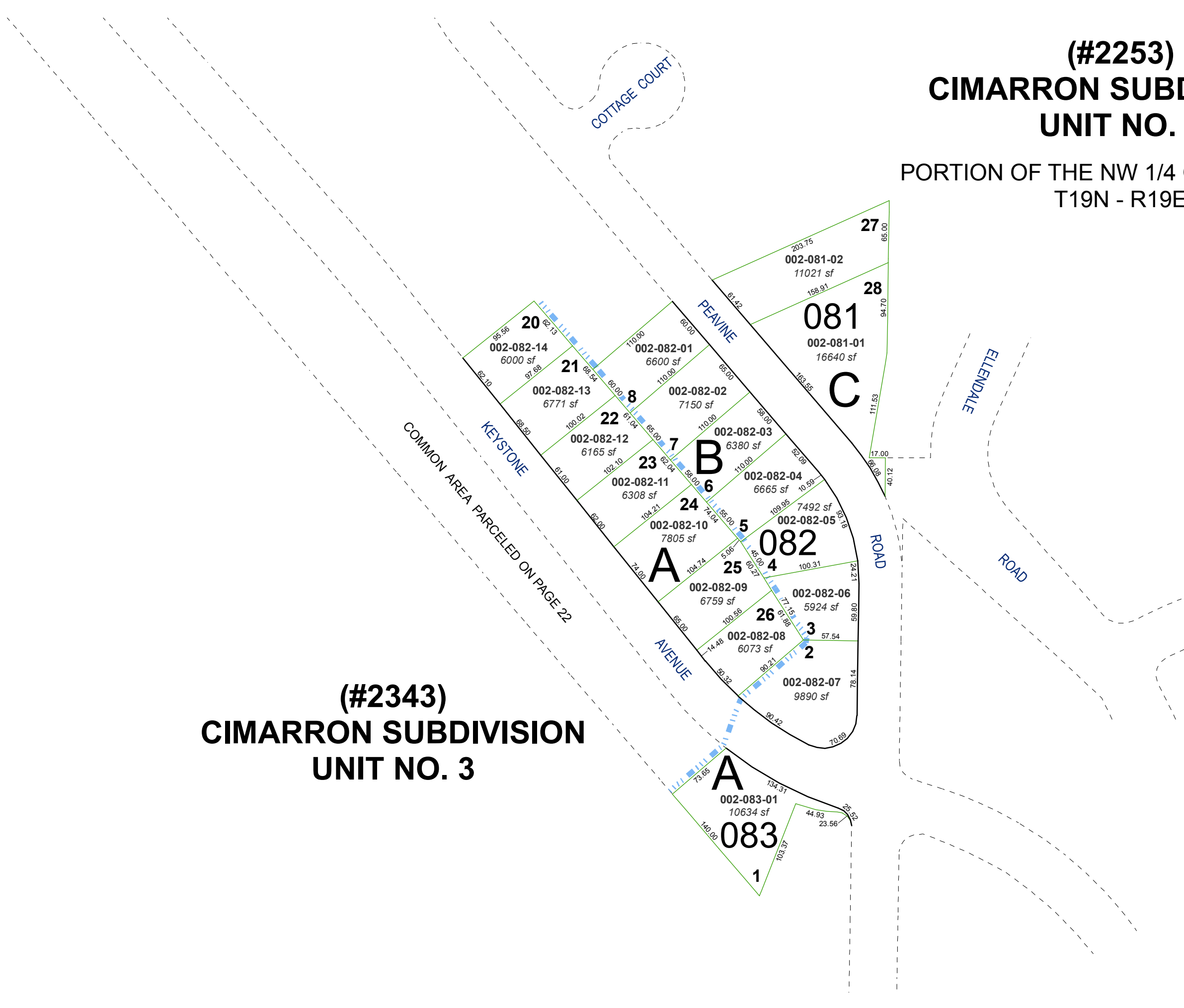
last updated: _____

area previously shown on map(s)

NOTE: This map was prepared for the use of the Washoe County Assessor for assessment and illustrative purposes only. It does not represent a survey of the premises. No liability is assumed as to the sufficiency or accuracy of the data delineated hereon.

(#2253) CIMARRON SUBDIVISION UNIT NO. 1

PORTION OF THE NW 1/4 OF SECTION 3
T19N - R19E



(#2343) CIMARRON SUBDIVISION UNIT NO. 3

COMMON AREA PARCELED ON PAGE 22