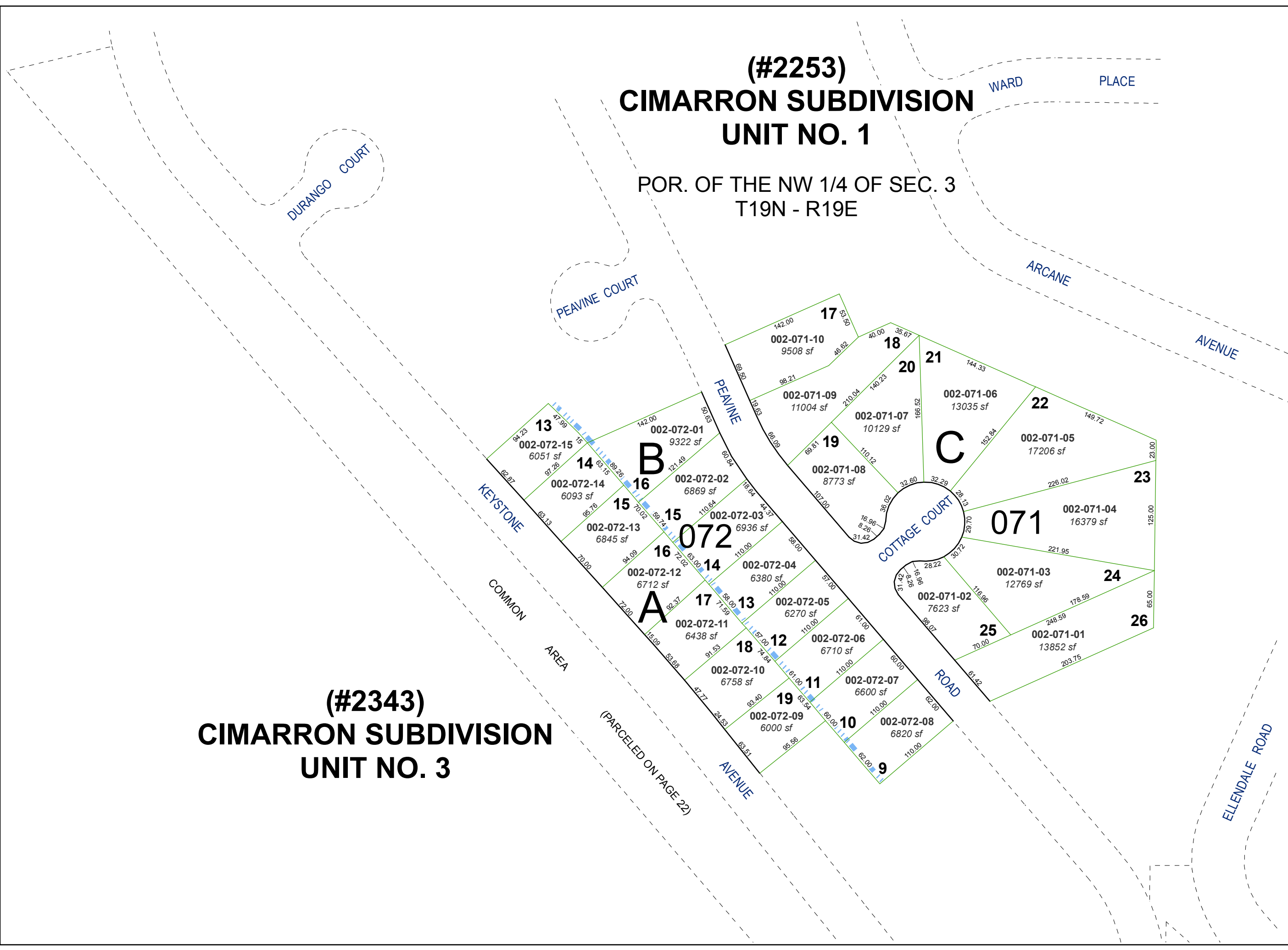


**(#2253)
CIMARRON SUBDIVISION
UNIT NO. 1**

POR. OF THE NW 1/4 OF SEC. 3
T19N - R19E

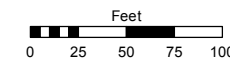
**(#2343)
CIMARRON SUBDIVISION
UNIT NO. 3**



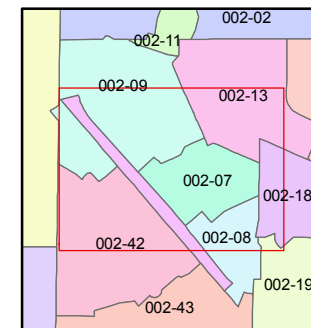
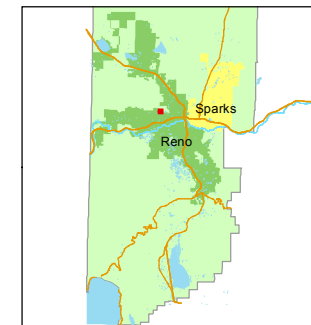
Assessor's Map Number
002-07

STATE OF NEVADA
WASHOE COUNTY
ASSESSOR'S OFFICE
Joshua G. Wilson, Assessor

1001 East Ninth Street
Building D
Reno, Nevada 89512
(775) 328-2231



1 inch = 100 feet



created by: TWT 3/15/2012

last updated: _____

area previously shown on map(s)

NOTE: This map was prepared for the use of the Washoe County Assessor for assessment and illustrative purposes only. It does not represent a survey of the premises. No liability is assumed as to the sufficiency or accuracy of the data delineated hereon.