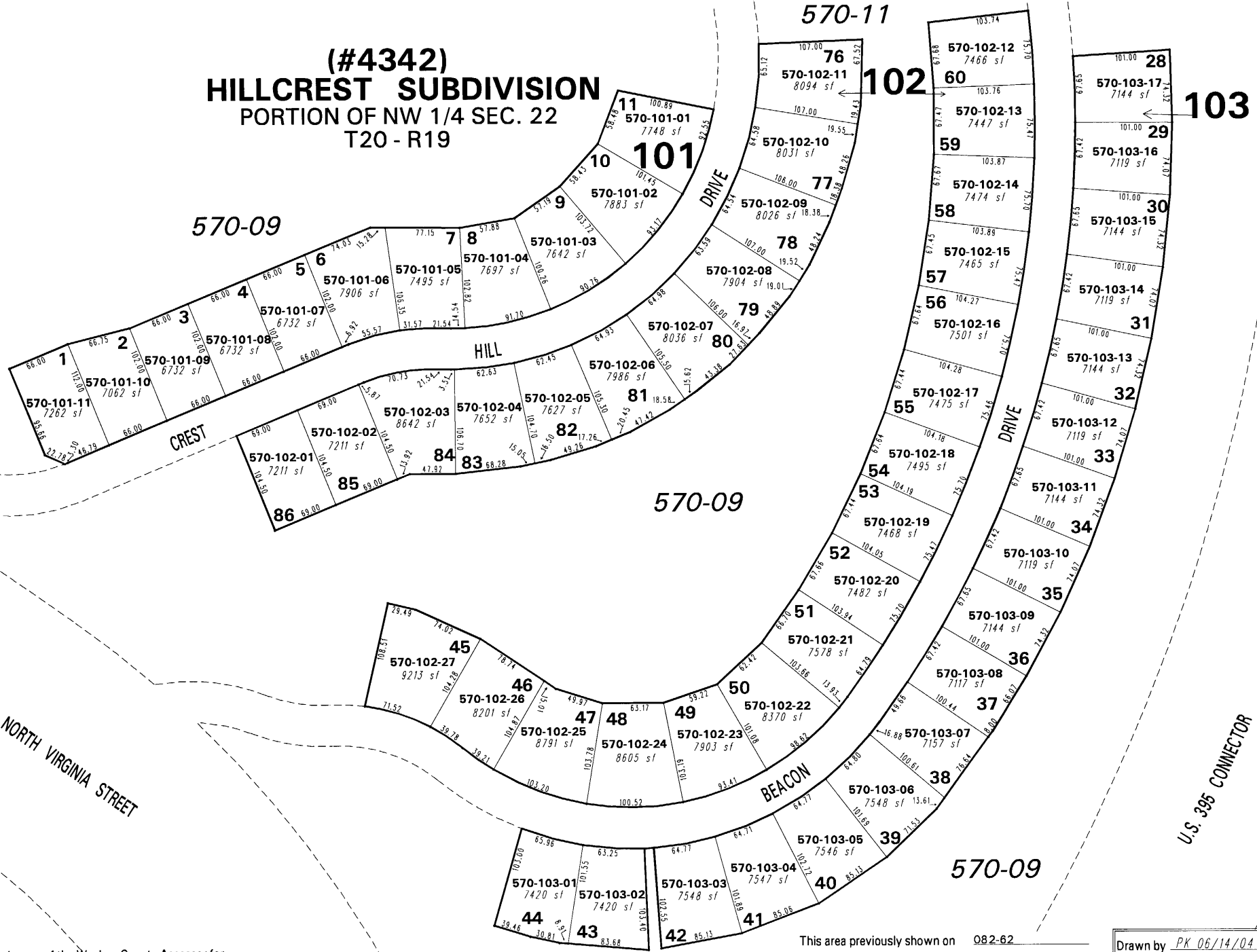


**(#4342)
HILLCREST SUBDIVISION
PORTION OF NW 1/4 SEC. 22
T20 - R19**



NOTE: This map is prepared for the use of the Washoe County Assessor for assessment and illustrative purposes only. It does not represent a survey of the premises. No liability is assumed as to the sufficiency or the accuracy of the data delineated hereon.

Office of Washoe County Assessor, Nevada - Robert W. McGowan

This area previously shown on O82-62

NOTE: Areas of parcels which are less than 2 acres are shown in square feet.

Drawn by PK 06/14/04
 Revised _____

