

PEAVINE HEIGHTS UNIT 1 (#3418)

POR. SE 1/4 SEC. 16, T20N - R19E

PG. 06

PG. 03

570-04

PG. 06

WEST GOLDEN VALLEY ROAD

VALLEY ROAD

D

PARCEL B

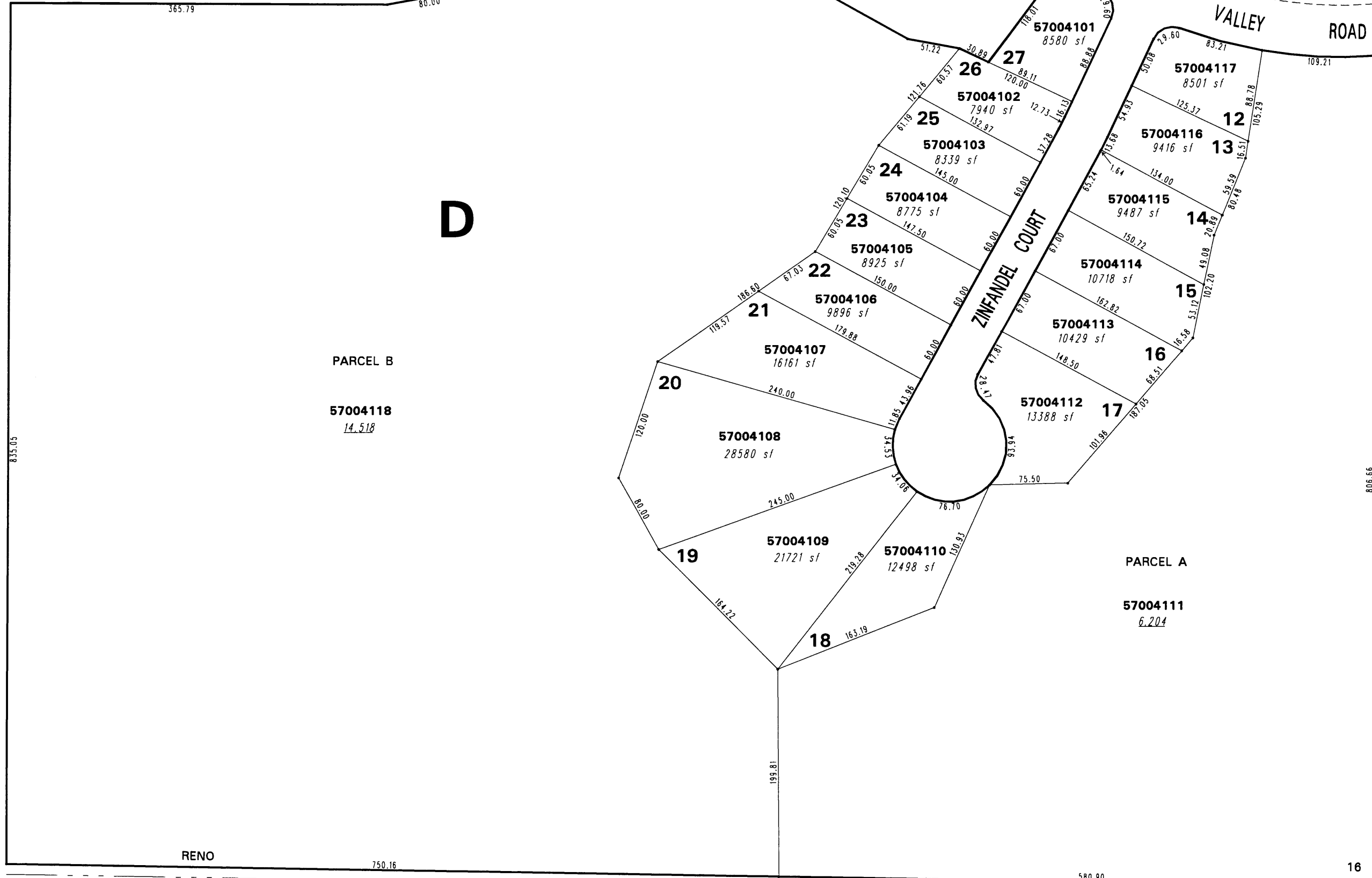
57004118
14,518

82-18

82-29

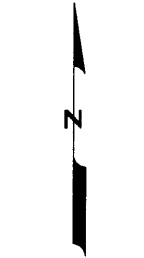
PARCEL A

57004111
6,204



RENO

WASHOE COUNTY



1" = 100'



82-18

This area previously shown on 82-18

NOTE: This map is prepared for the use of the Washoe County Assessor for assessment and illustrative purposes only. It does not represent a survey of the premises. No liability is assumed as to the sufficiency or the accuracy of the data delineated hereon.

Office of Washoe County Assessor, Nevada - Robert W. McGowan

NOTE: Areas of parcels which are less than 2 acres are shown in square feet.

Drawn by GZ 9/9/97
Revised 8/6/98 RLT DSR 8/12/99 TT9/18/00

ARC INFO 8.0.1 WINDOWS NT WORKSTATION 4.0