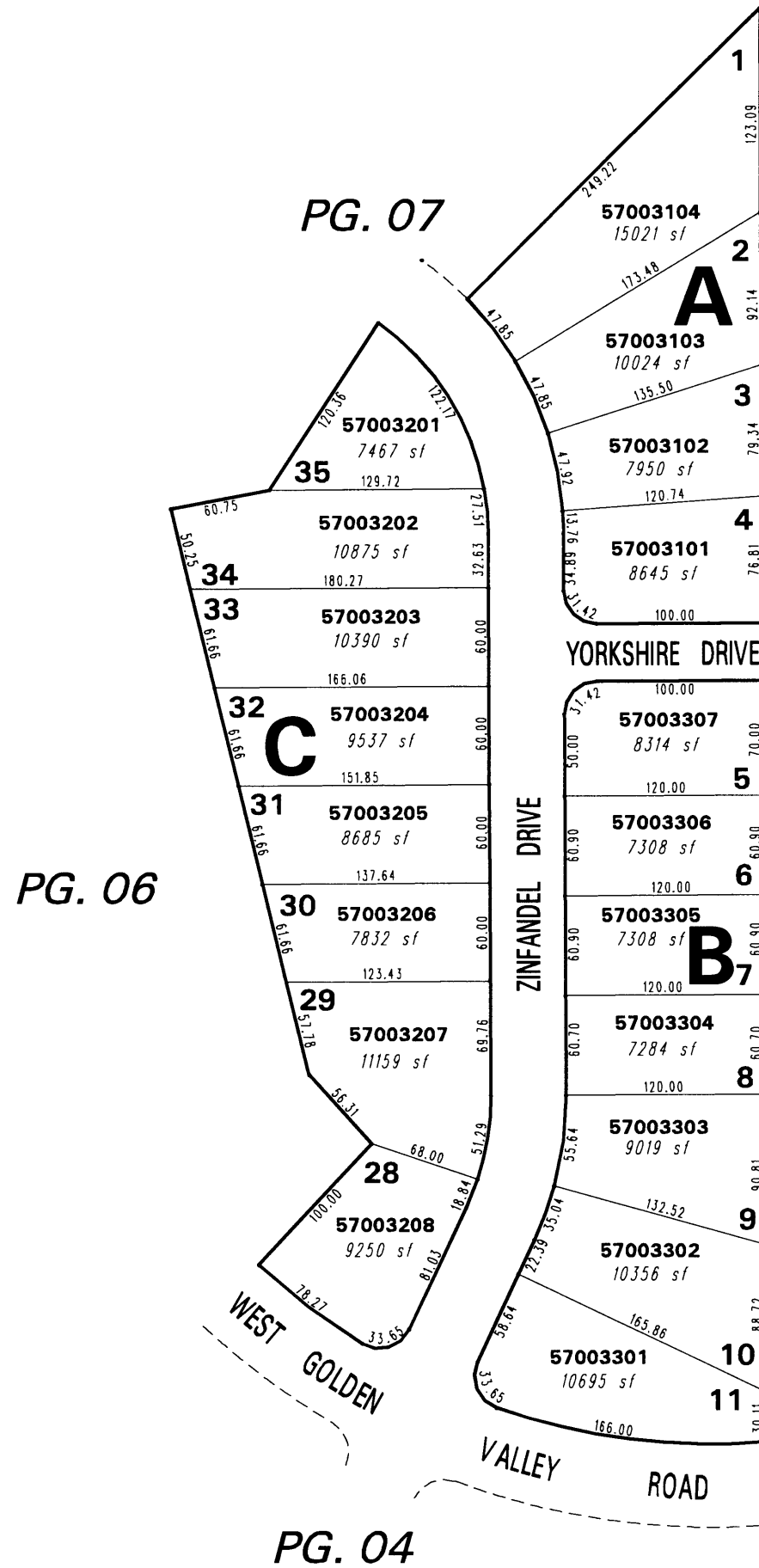
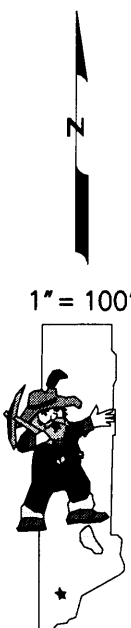


# PEAVINE HEIGHTS UNIT 1 (#3418)

POR. SE ¼ SEC. 16, T20N - R19E



82-29



NOTE: This map is prepared for the use of the Washoe County Assessor for assessment and illustrative purposes only. It does not represent a survey of the premises. No liability is assumed as to the sufficiency or the accuracy of the data delineated hereon.

Office of Washoe County Assessor, Nevada - Robert W. McGowan

This area previously shown on 82-18

NOTE: Areas of parcels which are less than 2 acres are shown in square feet.

Drawn by GZ 9/9/97  
 Revised 8/6/98 RLTD SR 8/12/99, 2/4/00  
5/18/00 TWT9/18/00