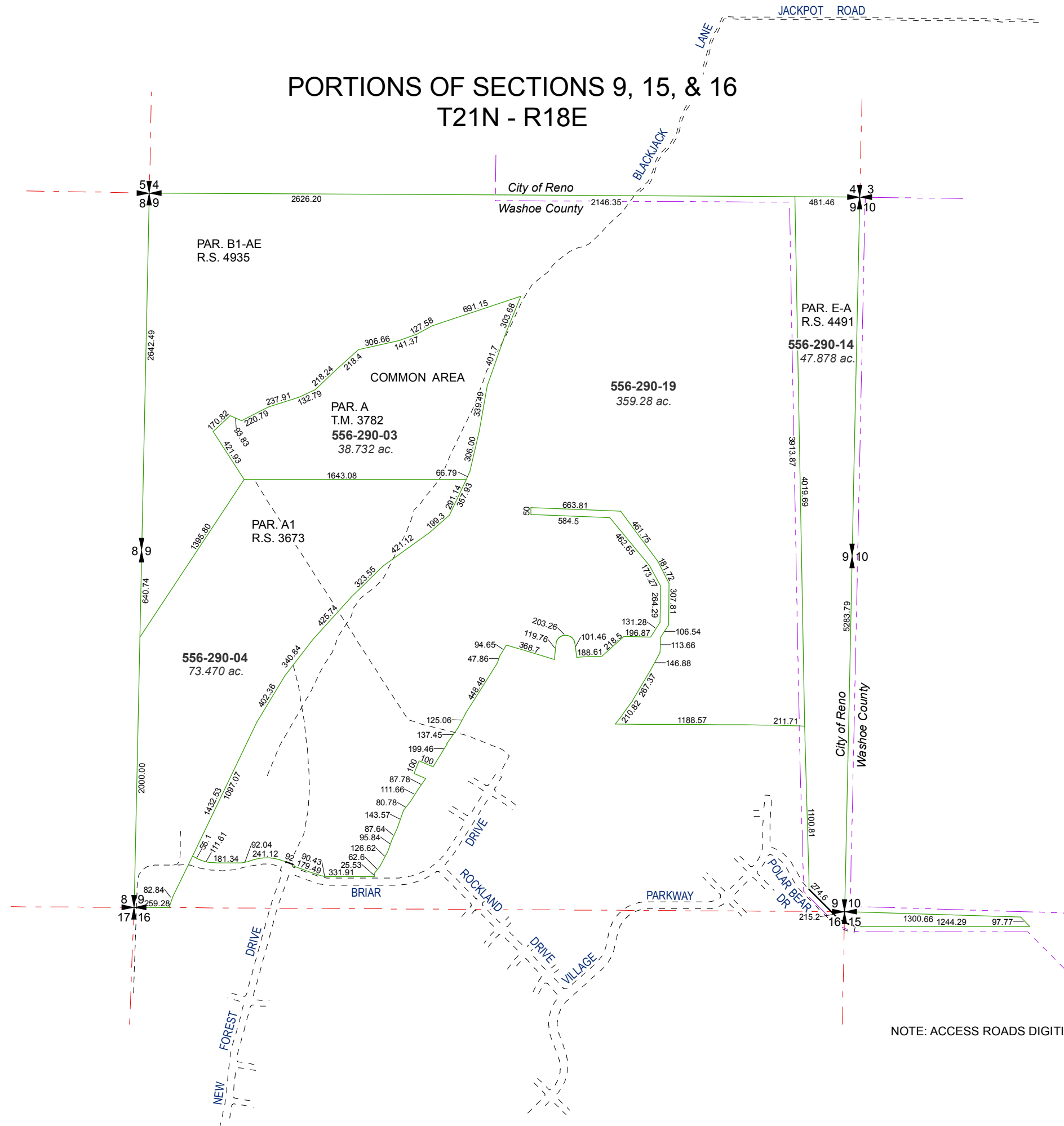


PORTIONS OF SECTIONS 9, 15, & 16 T21N - R18E

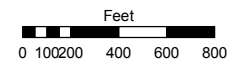


NOTE: ACCESS ROADS DIGITIZED FROM AERIAL PHOTOS

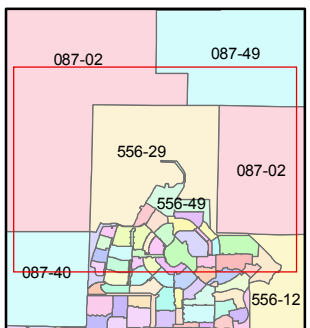
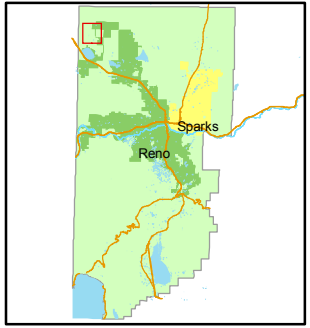
Assessor's Map Number
556-29

STATE OF NEVADA
WASHOE COUNTY
ASSESSOR'S OFFICE
Joshua G. Wilson, Assessor

1001 East Ninth Street
Building D
Reno, Nevada 89512
(775) 328-2231



1 inch = 800 feet



created by: NLH 5/19/2011

last updated: _____

area previously shown on map(s)

NOTE: This map was prepared for the use of the Washoe County Assessor for assessment and illustrative purposes only. It does not represent a survey of the premises. No liability is assumed as to the sufficiency or accuracy of the data delineated hereon.