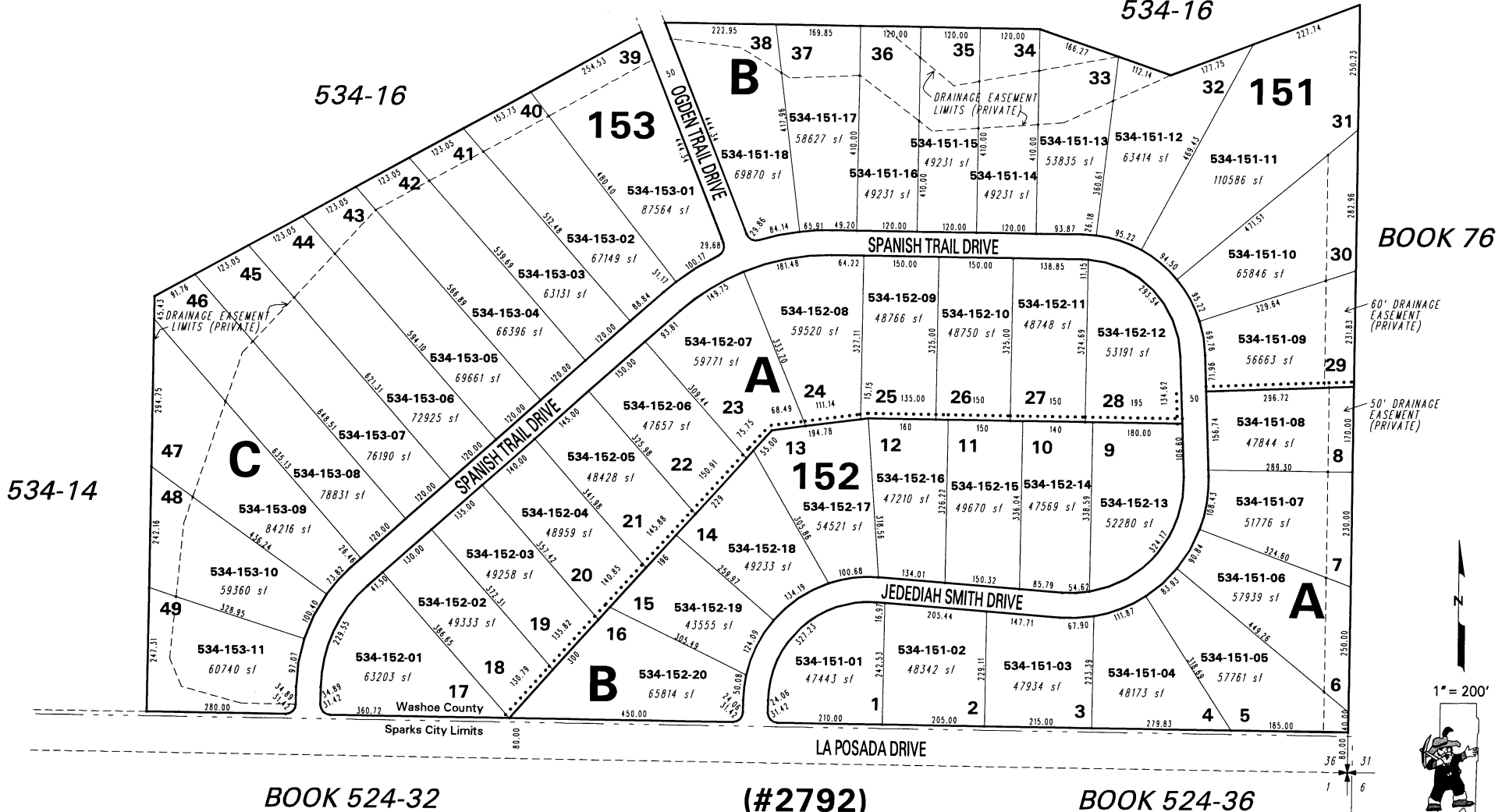


(#2840)
SURPRISE VALLEY RANCHOS PHASE 1B

534-15

534-16



BOOK 524-32

(#2792)

BOOK 524-36

SURPRISE VALLEY RANCHOS PHASE 1A
 PORTION OF THE SE 1/4 SECTION 36, T21N - R20E

La Posada Dr. Annexed to City of Sparks per Annex. TM 4189

NOTE: This map is prepared for the use of the Washoe County Assessor for assessment and illustrative purposes only. It does not represent a survey of the premises. No liability is assumed as to the sufficiency or the accuracy of the data delineated hereon.

Office of Washoe County Assessor, Nevada - Robert W. McGowan

This area previously shown on 76-73

NOTE: Areas of parcels which are less than 2 acres are shown in square feet.

Drawn by GS 4/23/92
 Revised 6/93 6/94 8/94 9/94 8/96
 DSR 11/17/99 KSB 5/01/03