

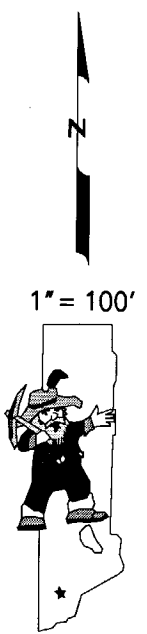
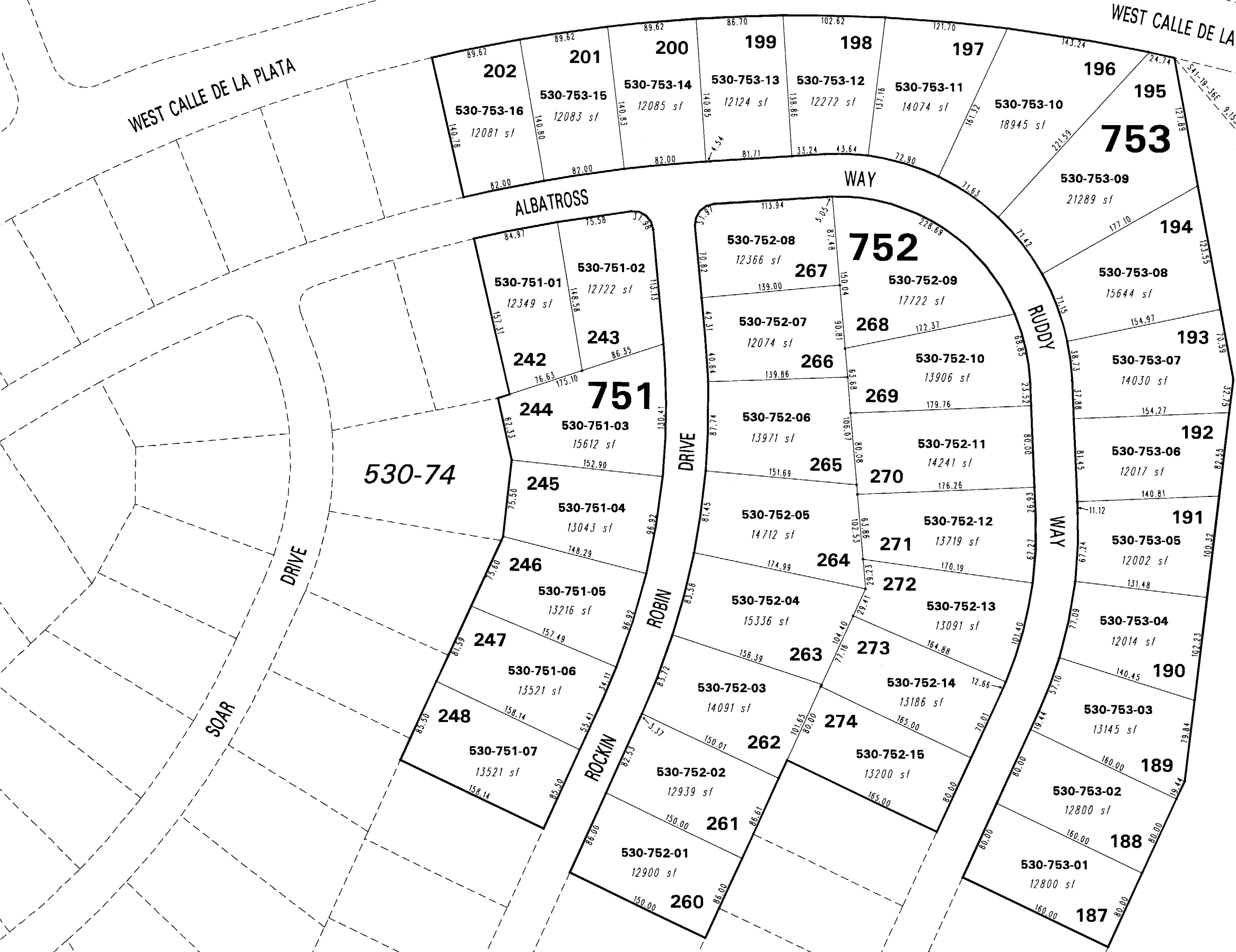
WEST CALLE DE LA PLATA

WEST CALLE DE LA PLATA

GPS MON. WE3028
N=14,913,469.510
E= 2,312,807.540

**(#4173)
EAGLE CANYON III
UNIT 3**
PORTIONS OF SE 1/4 SEC. 22 &
SW 1/4 SEC. 23, T21N - R20E

BOOK 532



NOTE: This map is prepared for the use of the Washoe County Assessor for assessment and illustrative purposes only. It does not represent a survey of the premises. No liability is assumed as to the sufficiency or the accuracy of the data delineated hereon.

Office of Washoe County Assessor, Nevada - Joshua G. Wilson

This area previously shown on 530-28

NOTE: Areas of parcels which are less than 2 acres are shown in square feet.

Drawn by KSB 03/10/03
Revised KSB 10/02/03 KSB 1/12/05
KSB 7/21/05 KSB 9/11/06 KSB 2/09/07