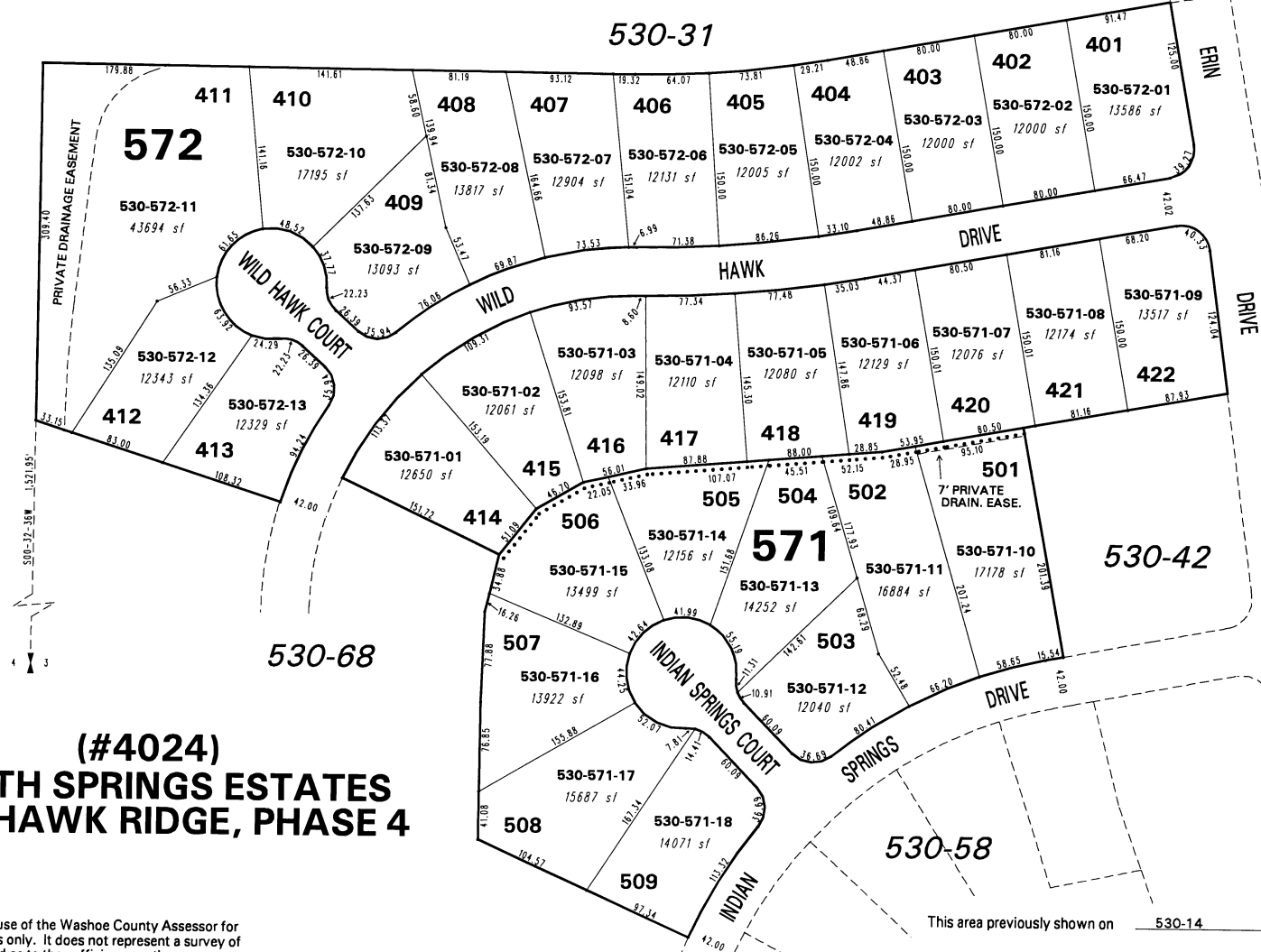


(#4018)
NORTH SPRINGS ESTATES
WILD HAWK RIDGE, PHASE 3
PORTION OF NW 1/4 OF SECTION 3
T20N - R20E

RICHARD SPRINGS BLVD.

N01-36-58E 4,359.75'
CPS MON. 3030
N=14,907,201.6010
E= 2,306,775.5470

BOOK 89



(#4024)
NORTH SPRINGS ESTATES
WILD HAWK RIDGE, PHASE 4

NOTE: This map is prepared for the use of the Washoe County Assessor for assessment and illustrative purposes only. It does not represent a survey of the premises. No liability is assumed as to the sufficiency or the accuracy of the data delineated hereon.

Office of Washoe County Assessor, Nevada - Robert W. McGowan

This area previously shown on 530-14

NOTE: Areas of parcels which are less than 2 acres are shown in square feet.

Drawn by KSB 12/05/01
Revised KSB 7/11/02 KSB 8/05/02
KSB 12/03/02

