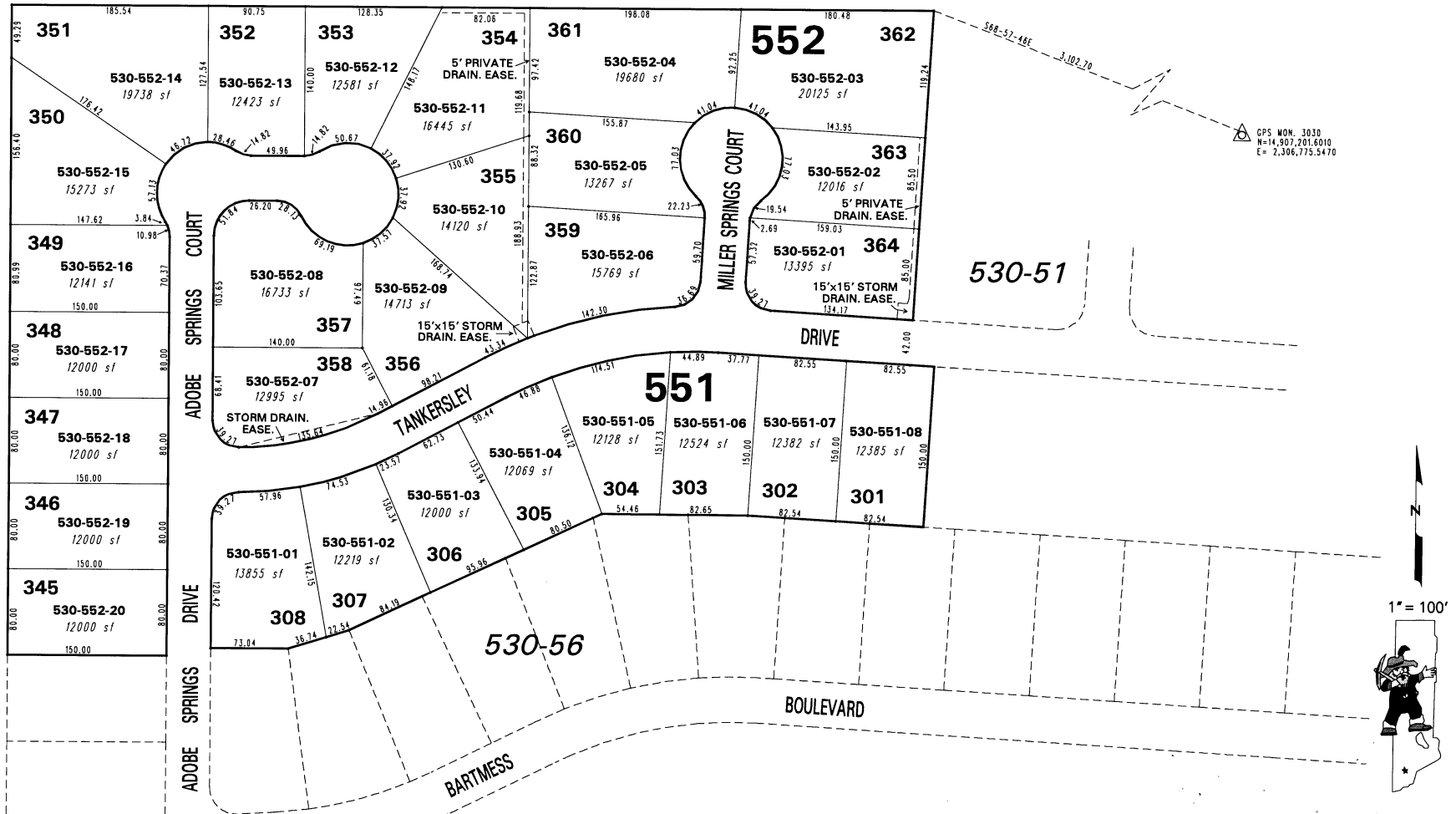


(#3995)
**NORTH SPRINGS ESTATES
CIMARRON WEST, PHASE 3**
A PORTION OF N 1/2 OF SEC. 3, T20N - R20E &
A PORTION OF S 1/2 OF SEC. 34, T21N - R20E

BOOK 89



NOTE: This map is prepared for the use of the Washoe County Assessor for assessment and illustrative purposes only. It does not represent a survey of the premises. No liability is assumed as to the sufficiency or the accuracy of the data delineated hereon.

Office of Washoe County Assessor, Nevada - Robert W. McGowan

This area previously shown on 530-14

NOTE: Areas of parcels which are less than 2 acres are shown in square feet.

Drawn by	<u>KSB 09/06/01</u>
Revised	<u>KSB 8/02/02</u>