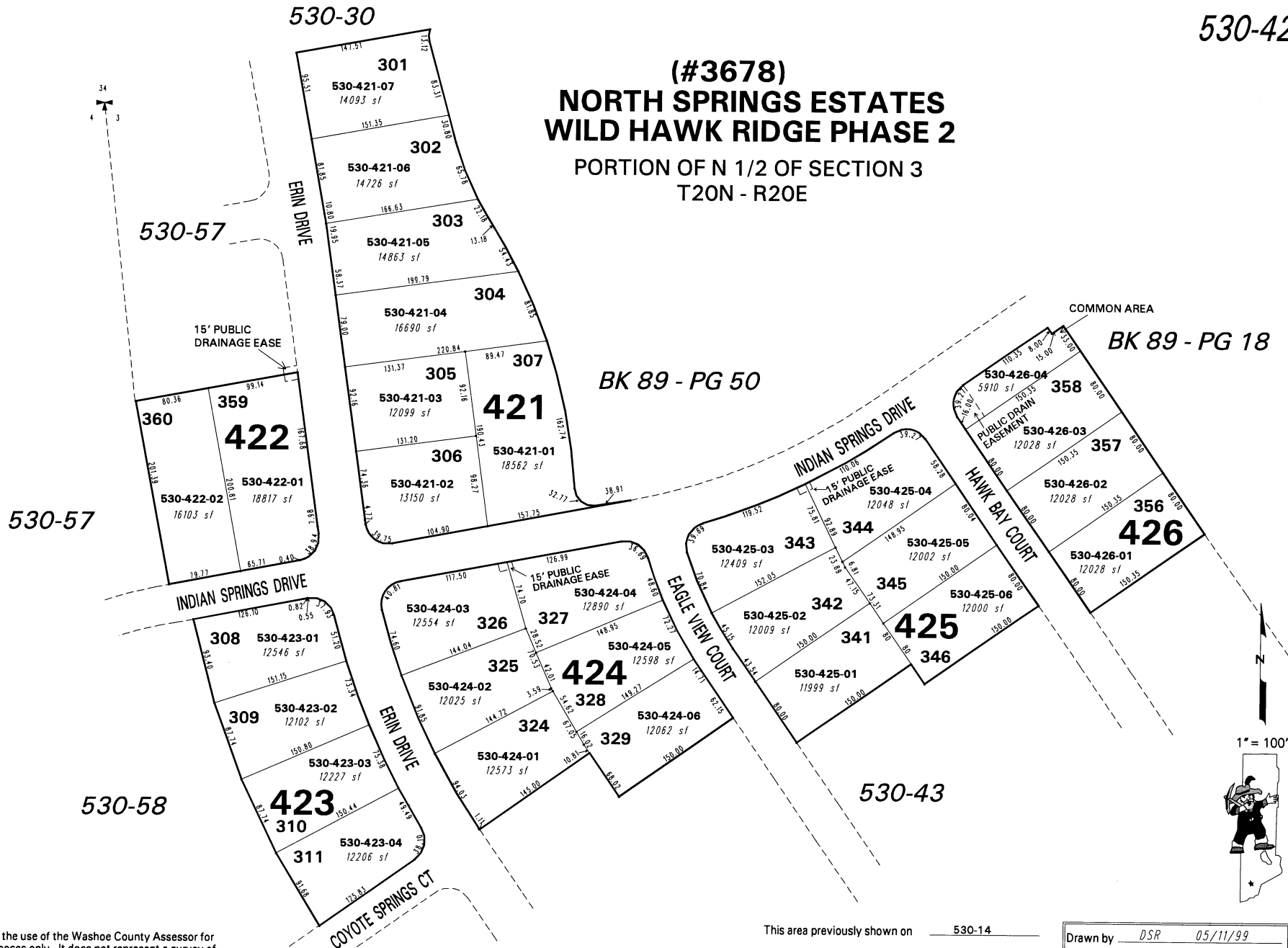


# (#3678) NORTH SPRINGS ESTATES WILD HAWK RIDGE PHASE 2

PORTION OF N 1/2 OF SECTION 3  
T20N - R20E



NOTE: This map is prepared for the use of the Washoe County Assessor for assessment and illustrative purposes only. It does not represent a survey of the premises. No liability is assumed as to the sufficiency or the accuracy of the data delineated hereon.

Office of Washoe County Assessor, Nevada - Robert W. McGowan

This area previously shown on 530-14

NOTE: Areas of parcels which are less than 2 acres are shown in square feet.

Drawn by	DSR	05/11/99
Revised	DSR 2/4/00	KSB 12/07/01
KSB 8/05/02		

