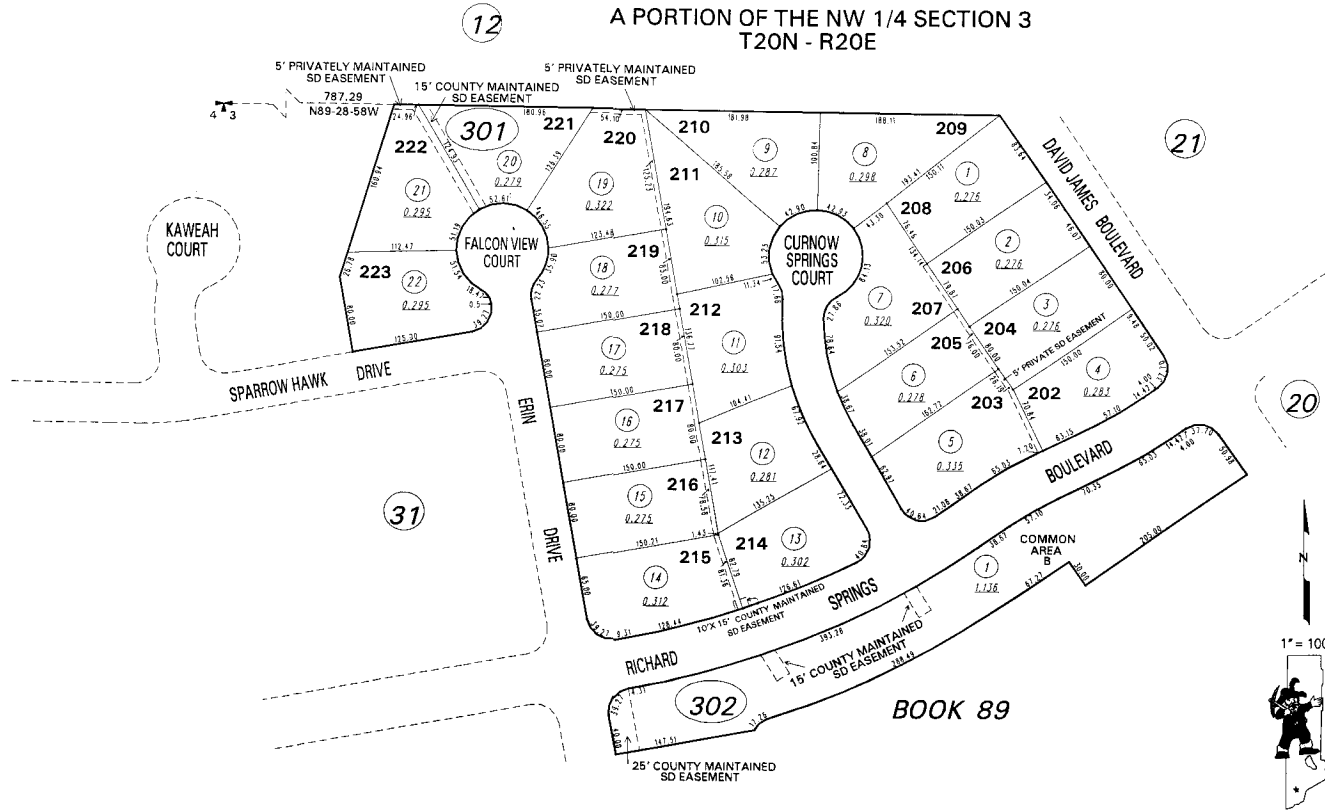


(#3457)  
NORTH SPRINGS ESTATES  
WILD HAWK RIDGE  
PHASE 1  
A PORTION OF THE NW 1/4 SECTION 3  
T20N - R20E



NOTE: This map is prepared for the use of the Washoe County Assessor for assessment and illustrative purposes only. It does not represent a survey of the premises. No liability is assumed as to the sufficiency or the accuracy of the data delineated hereon.

Office of Washoe County Assessor, Nevada - Robert W. McGowan

This area previously shown on 530-14

NOTE:  
ASSESSOR'S BLOCK NUMBERS SHOWN IN ELLIPSES  
ASSESSOR'S PARCEL NUMBERS SHOWN IN CIRCLES

Drawn by	10/16/97 T.J.F
Revised	10/23/98 RLT
	DSR 7/9/99
	DSR 2/4/00