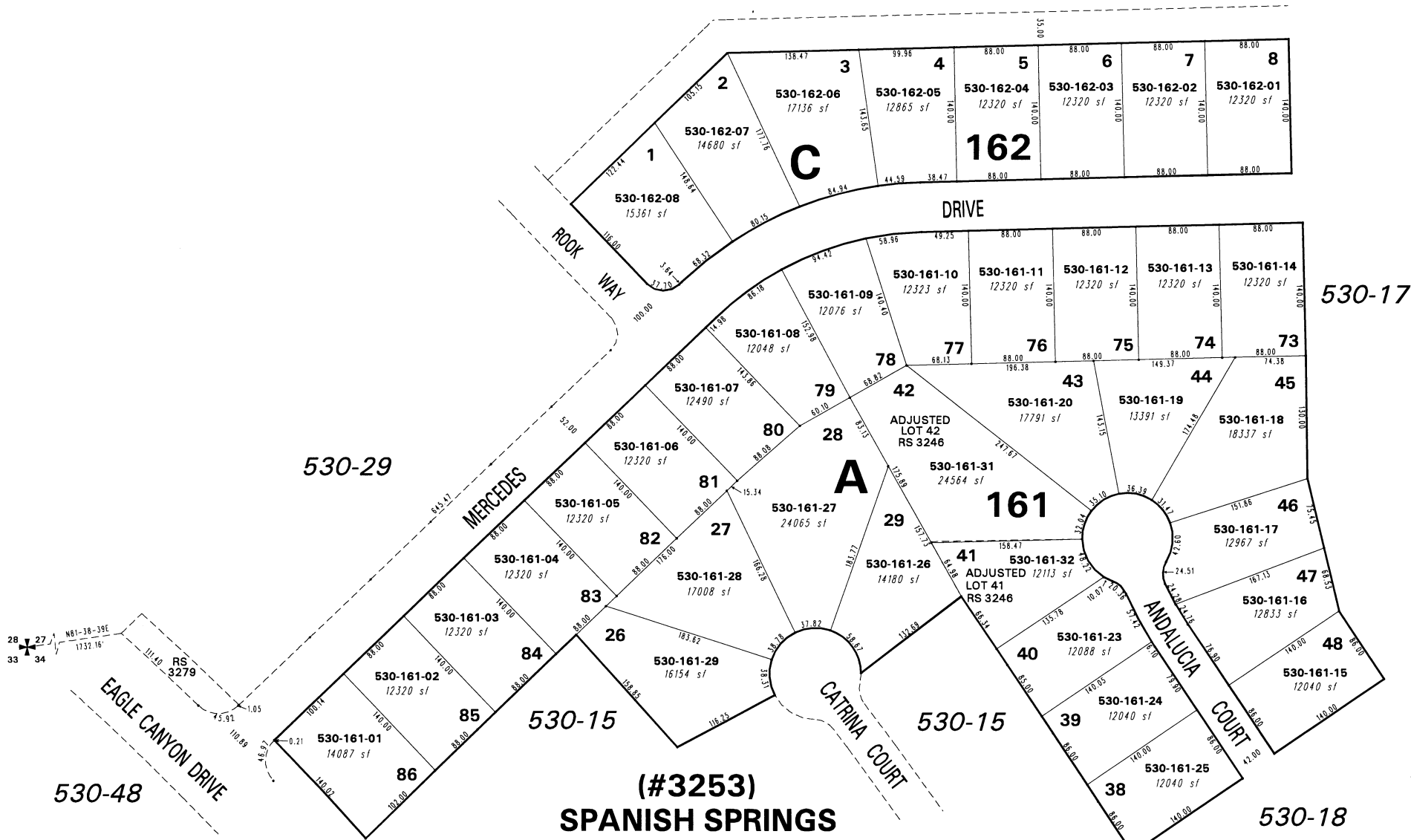


530-19

530-16



**(#3253)**  
**SPANISH SPRINGS**  
**VILLAGE NORTH UNIT-1**  
 PORTION S 1/2 SECTION 27  
 PORTION N 1/2 SECTION 34  
 T21N - R20E

*Office of Washoe County Assessor, Nevada - Robert W. McGowan*

This area previously shown on 89-16

Drawn by	KL 8/14/96
Revised	1/22/98 TJF TWT 1/26/01

NOTE: This map is prepared for the use of the Washoe County Assessor for assessment and illustrative purposes only. It does not represent a survey of the premises. No liability is assumed as to the sufficiency or the accuracy of the data delineated hereon.

NOTE: Areas of parcels which are less than 2 acres are shown in square feet.