

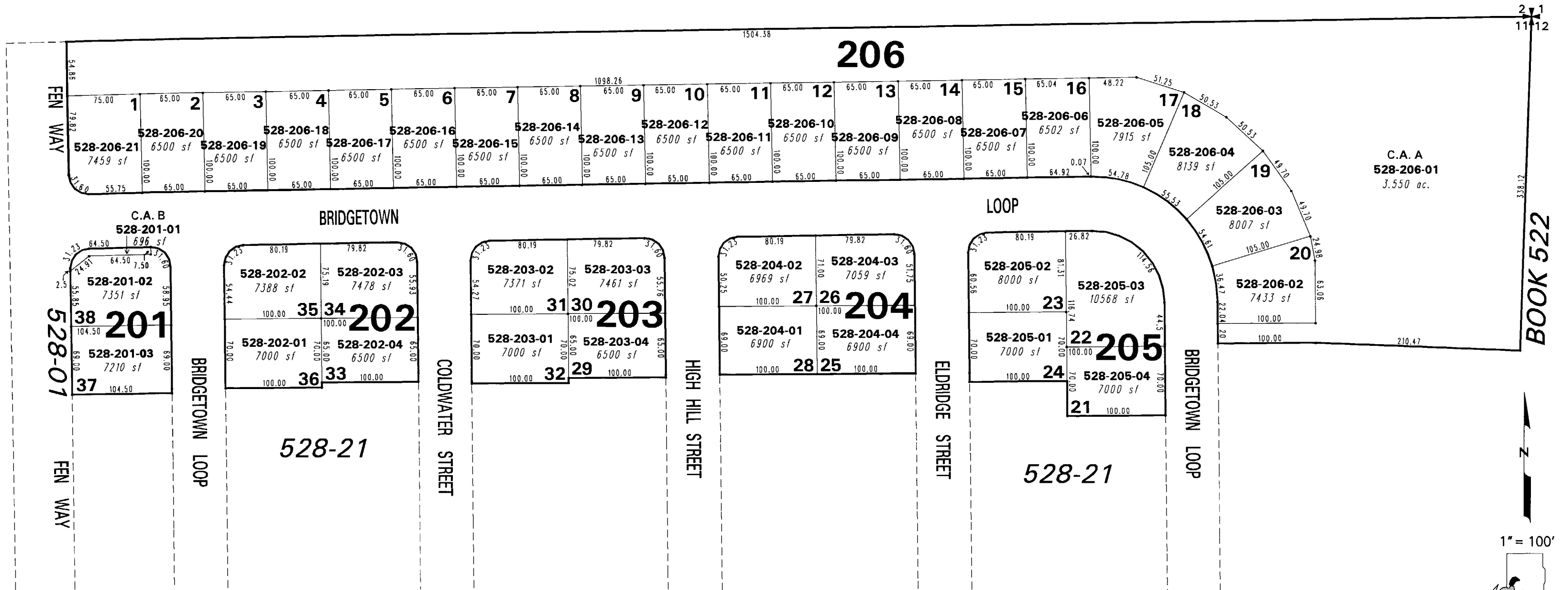
(#4844)

PIONEER MEADOWS VILLAGE 4B A PLANNED COMMUNITY

A POR. OF THE NE 1/4 OF SEC. 11,
T20N - R20E

528-03

528-03



NOTE: This map is prepared for the use of the Washoe County Assessor for assessment and illustrative purposes only. It does not represent a survey of the premises. No liability is assumed as to the sufficiency or the accuracy of the data delineated hereon.

Office of Washoe County Assessor, Nevada - Joshua G. Wilson

This area previously shown on 528-01

NOTE: Areas of parcels which are less than 2 acres are shown in square feet.

C.A. = COMMON AREA

Drawn by KSB 10/18/05
 Revised KSB 12/19/05 NLH 1/09/08