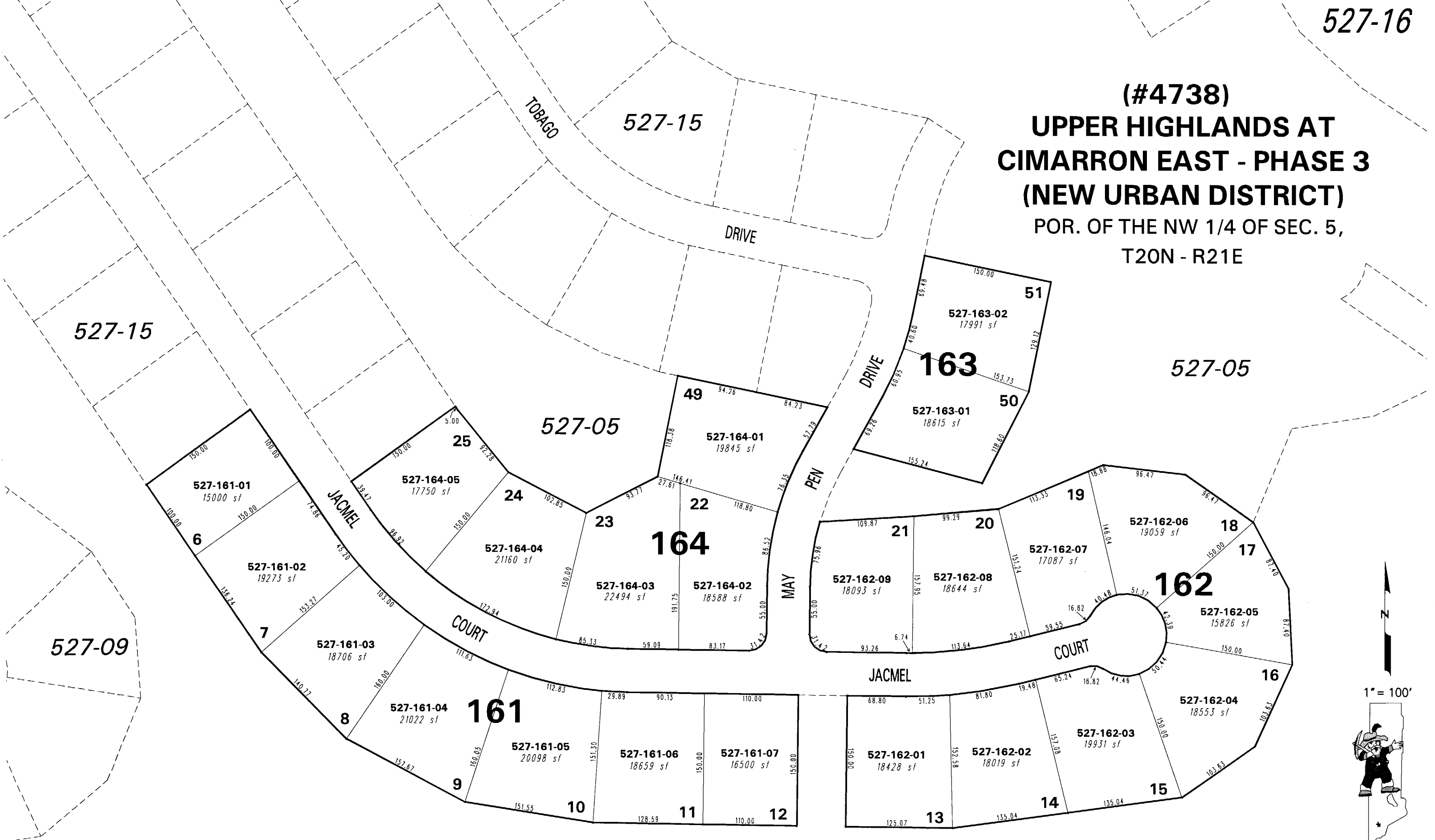


(#4738)
UPPER HIGHLANDS AT
CIMARRON EAST - PHASE 3
(NEW URBAN DISTRICT)
POR. OF THE NW 1/4 OF SEC. 5,
T20N - R21E



1" = 100'



527-05

This area previously shown on 527-05

NOTE: This map is prepared for the use of the Washoe County Assessor for assessment and illustrative purposes only. It does not represent a survey of the premises. No liability is assumed as to the sufficiency or the accuracy of the data delineated hereon.

Office of Washoe County Assessor, Nevada - Joshua G. Wilson

NOTE: Areas of parcels which are less than 2 acres are shown in square feet.

Drawn by NLH 01/30/07
Revised _____
