

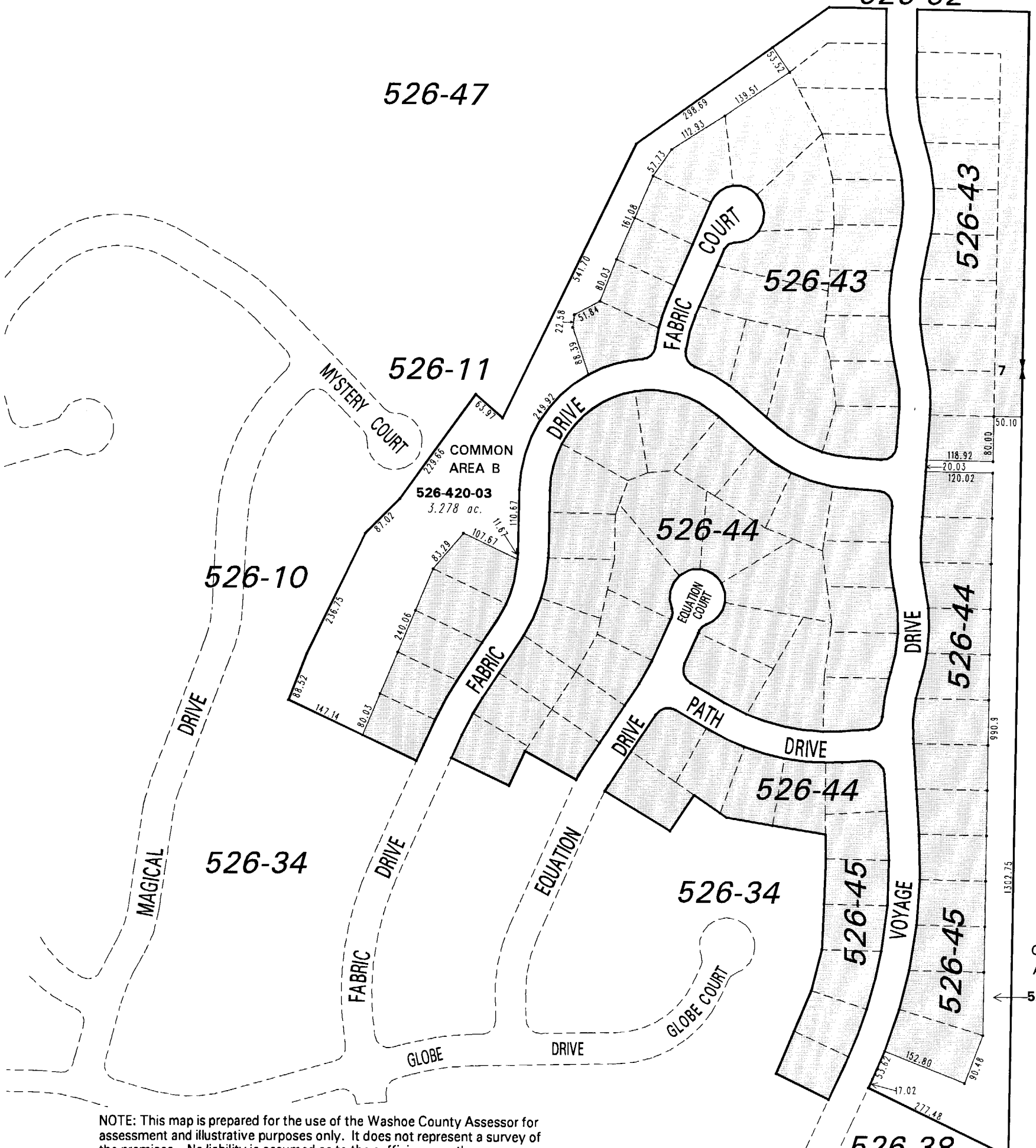
526-47

(#4595)

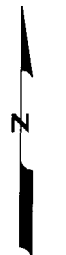
THE FOOTHILLS AT WINGFIELD VILLAGE 7B

NEW URBAN DISTRICT

**PORTION OF THE EAST 1/2 OF SECTION 7
T20N - R21E**



084-01



1" = 200'



NOTE: This map is prepared for the use of the Washoe County Assessor for assessment and illustrative purposes only. It does not represent a survey of the premises. No liability is assumed as to the sufficiency or the accuracy of the data delineated hereon.

Office of Washoe County Assessor, Nevada - Robert W. McGowan

This area previously shown on 526-33

NOTE: Areas of parcels which are less than 2 acres are shown in square feet.

Drawn by PK 2/16/06
Revised PK 4/6/06 PK 5/11/06