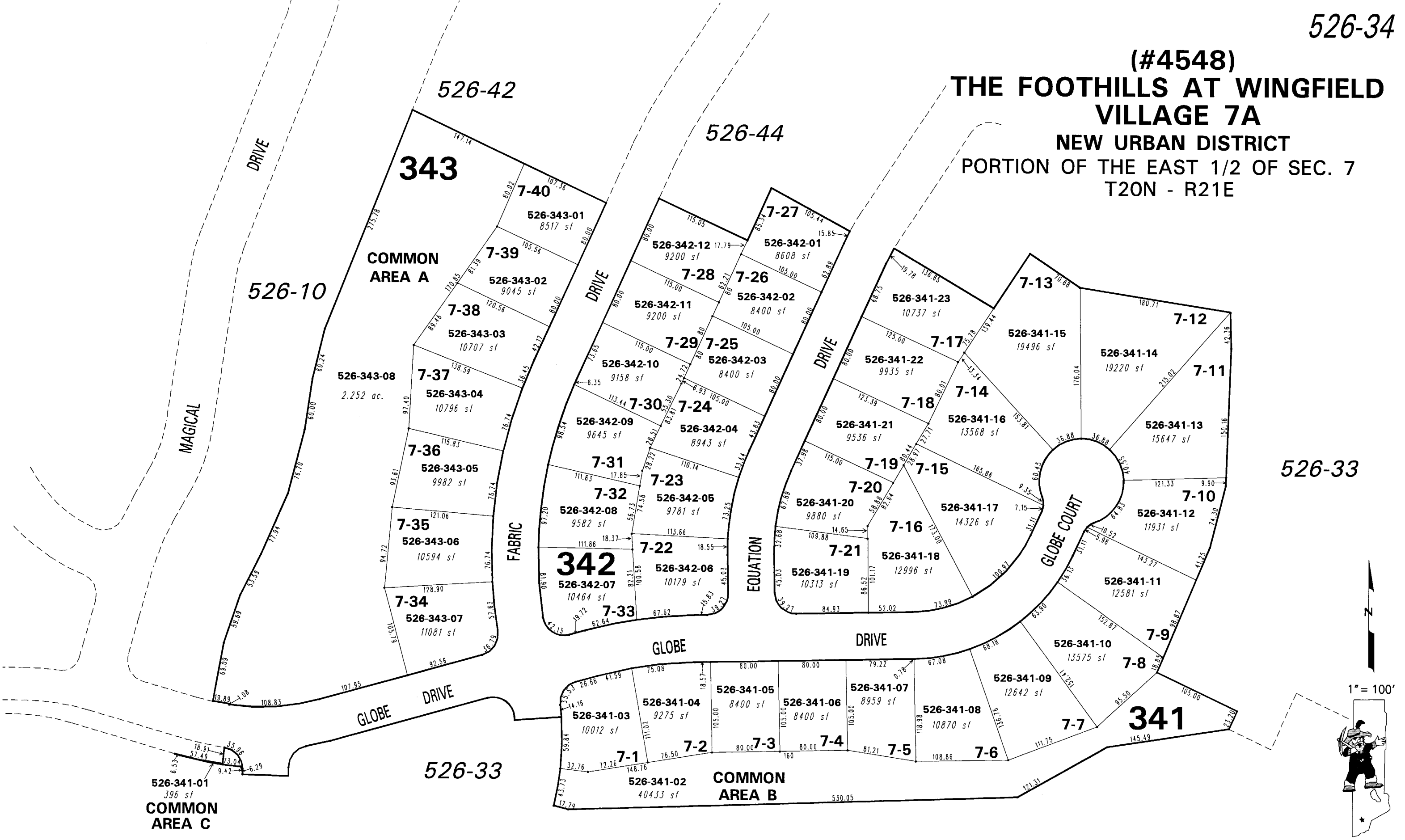


(#4548)

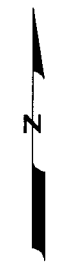
THE FOOTHILLS AT WINGFIELD VILLAGE 7A

NEW URBAN DISTRICT

PORTION OF THE EAST 1/2 OF SEC. 7 T20N - R21E



526-33



1" = 100'



NOTE: This map is prepared for the use of the Washoe County Assessor for assessment and illustrative purposes only. It does not represent a survey of the premises. No liability is assumed as to the sufficiency or the accuracy of the data delineated hereon.

Office of Washoe County Assessor, Nevada - Robert W. McGowan

This area previously shown on 526-01

NOTE: Areas of parcels which are less than 2 acres are shown in square feet.

Drawn by PK 10/24/05
 Revised PK 2/16/06