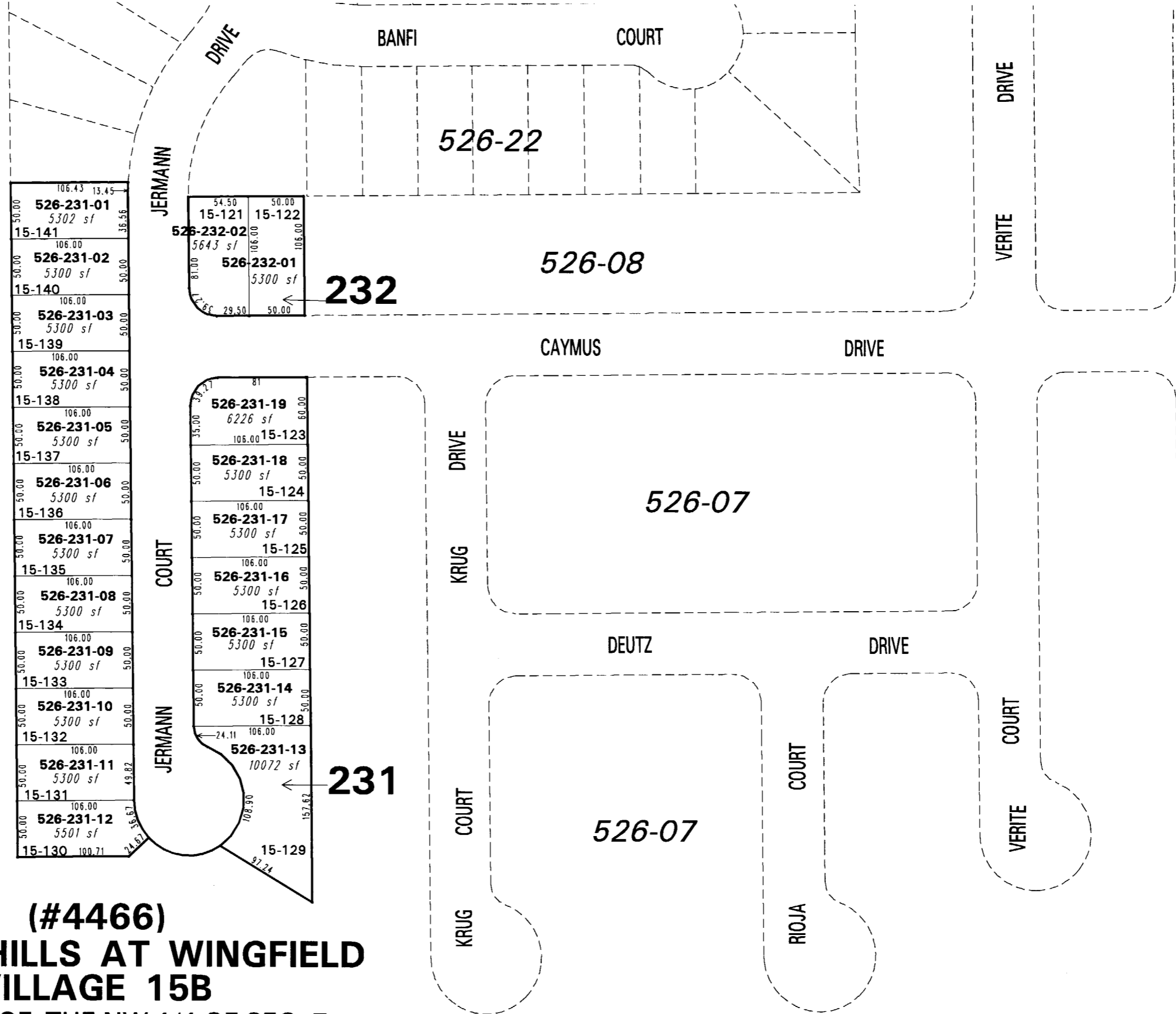


526-23

BOOK 522



**(#4466)**  
**THE FOOTHILLS AT WINGFIELD**  
**VILLAGE 15B**  
 PORTION OF THE NW 1/4 OF SEC. 7  
 T20N - R21E

526-24

NOTE: This map is prepared for the use of the Washoe County Assessor for assessment and illustrative purposes only. It does not represent a survey of the premises. No liability is assumed as to the sufficiency or the accuracy of the data delineated hereon.

Office of Washoe County Assessor, Nevada - Robert W. McGowan

This area previously shown on 526-01

NOTE: Areas of parcels which are less than 2 acres are shown in square feet.

Drawn by PK 04/28/05  
 Revised PK 7/19/05